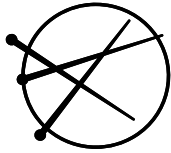


150999-053032

schoeller+stahl
GANZ SCHÖN KREATIV

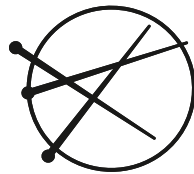


**AUSTERMANN
WOLLE**



Collection 2024/25

Austermann Wolle & Schoeller + Stahl



**AUSTERMANN
WOLLE**

Natürlich das Beste

Organic at its Best







Herzlich
Wollkommen
Welcome

Inhalt · Content

Qualität · quality	Seite · page	Art.-Nr. · quality-no.	Zusammensetzung · composition	Lauflänge · running length	Nadelstärke · needles (EU)
Austermann Wolle					
 Akina	47	90322	52% Schurwolle (Superfine) · virgin wool, 30% Alpaka (Baby) · alpaca, 18% Polyester · polyester	135m / 50g	4–5
 Briana Alpaca & Cotton	48	90319	51% Alpaka · alpaca, 49% Baumwolle · cotton	165m / 50g	4–5
 Maxin Merino & Seide	49	90320	80% Schurwolle (Superfine) · virgin wool, 20% Seide Tussah · silk tussah	150m / 50g	3–4
  Merino 120	50	97613	100% Merinowolle (Superfine) · merino wool	120m / 50g	3,5–4,5
 Antea Soft	52	90308	70% Baumwolle (Organic) · cotton, 18% Schurwolle (Merino extrafine) · virgin wool, 12% Alpaka (Baby) · alpaca	100m / 50g	5–6
 Biola	53	98258	70% Schurwolle (Organic) · virgin wool, 30% Alpaka · alpaca	112m / 50g	4–5
 Bio Cotton	54	98299	100% Baumwolle (Organic) · cotton	180m / 50g	2,5–3,5
 Bio Cotton Color	56	98300	100% Baumwolle (Organic) · cotton	180m / 50g	2,5–3,5
 Bio Cotton 125	57	90345	100% Baumwolle (Organic) · cotton	125m / 50g	3–4
 Ecopure Organic Cotton	58	90334	100% Baumwolle (Organic) · cotton	115m / 50g	4–5
 Fairshine	59	90339	70% Schurwolle (Superfine) · virgin wool, 30% Lyocell (Tencel) · lyocell	280m / 100g	4–5
 Fantasy Colours	60	90327	100% Baumwolle (Organic) · cotton	1000m / 250g	3–3,5
 Merino Cotton	61	98311	55% Schurwolle (Organic Merino-Lambswoll) · virgin wool, 45% Baumwolle (Organic) · cotton	230m / 50g	3–4
 Merino Cotton Color	63	90348	55% Schurwolle (Organic Merino-Lambswoll) · virgin wool, 45% Baumwolle (Organic) · cotton	230m / 50g	3–4
  Step 4 Merino 4-fach Uni & Melangen	64	90317	100% Schurwolle (Superwash) · virgin wool	400m / 100g	2,5–3
  Step 4 Merino Color 4-fach	65	90318	100% Schurwolle (Superwash) · virgin wool	400m / 100g	2,5–3
  Step 6 Merino Color 6-fach	66	90337	100% Schurwolle (Superwash) · virgin wool	400m / 150g	3–4

Alpaca Cotton	67	90310	41% Alpaka · alpaca, 49% Baumwolle · cotton	165m / 50g	4–5
Alpaca Fluffy	68	98321	70% Schurwolle (Merino, Extrafine) · virgin wool, 30% Alpaka (Superfine) · alpaca	85m / 50g	7–8
Alpaca Love	69	90312	98% Alpaka (Superfine) · alpaca, 2% Polyester (Elité) · polyester	60m / 50g	7–8
Alpaca Silk	70	90333	70% Alpaka · alpaca, 30% Seide · silk	210m / 25g	3–4
Camel & Wool	71	90343	65% Schurwolle (Superfine) · virgin wool, 20% Camel · camel, 15% Polyamid · nylon	180m / 50g	5–6
Cashmere Cloud	72	90349	46% Wolle (Superfein) · wool, 34% Baumwolle · cotton, 20% Kaschmir · cashmere	180m / 25g	3–4
Coleen Linen	73	90313	60% Leinen · flax, 25% Baumwolle · cotton, 15% Viskose · viscose	120m / 50g	3,5–4,5
Cornwall Linen	74	90342	85% Schurwolle (Superfine) · virgin wool, 15% Leinen · Flax	100m / 50g	4,5–5,5
Denim Melange	75	90305	65% Baumwolle · cotton, 35% Viskose (Lyocell) · viscose	160m / 50g	3–4
Eco Cashmere	76	90311	100% Kaschmir · cashmere	112m / 25g	3–4
Eila	77	90314	49% Viskose (Lyocell Tencel TM) · viscose, 30% Baumwolle · cotton, 21% Leinen · flax	95m / 50g	5–6
Flake Dance	78	90332	66% Baumwolle · cotton, 21% Polyacryl · acrylic, 5% Wolle · wool, 5% Polyamid · nylon, 3% Alpaka · alpaca	100m / 50g	5–6
Kid Silk	79	98233	75% Mohair · mohair, 25% Seide · silk	225m / 25g	3–4
Kid Silk Degradé	81	98309	70% Mohair Super Kid · mohair, 30% Seide · silk	425m / 50g	3–4
Magic Silk	82	98206	100% Seide · silk	200m / 50g	3,5–4
Magic Silk Color	83	98207	100% Seide · silk	200m / 50g	3,5–4
Maila Multicolor	84	90309	65% Schurwolle · virgin wool, 35% Polyacryl · acrylic	90m / 50g	5–6
Merino 160	85	97610	100% Schurwolle (Superfine) · virgin wool	160m / 50g	3–4
Merino 160 Color	87	97611	100% Schurwolle (Superfine) · virgin wool	160m / 50g	3–4
Meino 105	88	97612	100% Schurwolle (Superfine) · virgin wool	105m / 50g	4–5
Merino 85	90	97614	100% Schurwolle (Superfine) · virgin wool	85m / 50g	6–7
Pailletten Beilaufgarn	92	98201	100% Polyester · polyester	185m / 25g	
Playa Organic Cotton	93	90307	88% Baumwolle (Organic Cotton) · cotton, 12% Polyamid · nylon	120m / 50g	4–5
Provence Color	94	90304	72% Baumwolle · cotton, 14% Alpaka · alpaca · 14% Wolle · wool	137m / 25g	3–4
Runa	95	90352	32% Wolle · wool, 32% Polyacryl · acrylic, 20% Polyamid · nylon, 16% Alpaka · alpaca	375m / 150g	6–7
Silk Cotton	96	90301	70% Baumwolle · cotton, 30% Seide · silk	130m / 50g	3,5–4,5
Svea Alpaca & Cotton	97	90316	50% Baumwolle · cotton, 35% Alpaka (Baby) · alpaca, 15% Polyamid · nylon	200m / 50g	3,5–4,5



	Wooly Shine	98	90351	70% Wolle · wool, 29% Polyacryl · acrylic, 1% Elasthan · elastane	125m / 50g	5–6
	Step 4-fach Color	99	97689	75% Schurwolle (Superwash) · virgin wool, 25% Polyamid · nylon	420m / 100g	2,5–3
	Step 6-fach Color	101	97825	75% Schurwolle (Superwash) · virgin wool, 25% Polyamid · nylon	410m / 150g	3–4
	Step 6-fach Color Aufmachung im Kuchenknäuel	102	97826	75% Schurwolle (Superwash) · virgin wool, 25% Polyamid · nylon	410m / 150g	3–4
	Step 4-fach Classic Uni	104	98214	75% Schurwolle (Superwash) · virgin wool, 25% Polyamid · nylon	420m / 100g	2,5–3
	Step 6-fach Classic Uni	106	97693	75% Schurwolle (Superwash) · virgin wool, 25% Polyamid · nylon	410m / 150g	3–4
	Merino Lace*	107	97615	100% Schurwolle (Superfine) · virgin wool	400m / 50g	3–4
	Raindrops Degradé*	108	90324	75% Wolle · wool, 20% Polyamid · nylon, 5% Baumwolle · cotton	120m / 150g	6–7

*Auslauffarben · Discontinued colors

Schoeller + Stahl

neu
new

	New Murano	111	90288	53% Schurwolle · virgin wool, 32% Polyacryl · acrylic	180m / 100g	6–7
	Fortissima 4-fach Uni	112	90038	75% Schurwolle (Superwash) · virgin wool, 25% Polyamid · nylon	420m / 100g	2,5–3
	Fortissima Beilaufgarn	114	90330	75% Schurwolle (Superwash) · virgin wool, 25% Polyamid · nylon	40m / 5g	
	Fortissima Color 4-fach	116	90028	75% Schurwolle (Superwash) · virgin wool, 25% Polyamid · nylon	420m / 100g	2,5–3
	Fortissima Mexiko 4-fach	118	90016	75% Schurwolle (Superwash) · virgin wool, 25% Polyamid · nylon	420m / 100g	2,5–3
	Fortissima Color 6-fach	119	90008	75% Schurwolle (Superwash) · virgin wool, 25% Polyamid · nylon	410m / 150g	3–4
	Fortissima 6-fach TWEED-Effekt	120	90007	75% Schurwolle (Superwash) · virgin wool, 25% Polyamid · nylon	410m / 150g	3–4
	Fortissima Merino 4-fach	121	93042	75% Schurwolle (Superwash) · virgin wool, 25% Polyamid · nylon	420m / 100g	2,5–3
	Allround	122	90037	50% Schurwolle sw · virgin wool, 50% Polyacryl · acrylic	125m / 50g	4–4,5
	Alpha	124	90088	70% Polyacryl · acrylic, 30% Schurwolle · virgin wool	60m / 50g	7–8
	Baby Merino	126	93429	100% Schurwolle (Superwash) · virgin wool	95m / 25g	2,5–3,5
	Baby Merino Color	127	93457	100% Schurwolle (Superwash) · virgin wool	95m / 25g	2,5–3,5
	Baby Happy	128	90279	100% Polyacryl · acrylic	185m / 50g	3–3,5
	Baby Happy Color	129	90280	100% Polyacryl · acrylic	185m / 50g	3–3,5
	Baby Mix	130	90166	50% Schurwolle (Superwash) · virgin wool, 50% Polyacryl (Micorfaser) · acrylic	135m / 50g	3,5–4

Baby Mix Color	131	91271	50% Schurwolle (Superwash) · virgin wool, 50% Polyacryl (Micorfaser) · acrylic	135m / 50g	3,5–4
Bambou Cotton	132	90286	40% Viskose (Bambus) · viscose, 30% Baumwolle · cotton, 30% Polyacryl · acrylic	400m / 100g	2,5–3,5
Chic & Warm	133	90179	75% Polyacryl · acrylic, 15% Wolle · wool, 10% Alpaka · alpaca	210m / 100g	4,5–5,5
Cosy Tweed	134	90284	31% Polyacryl · acrylic, 20% Wolle · wool, 16% Polyester · polyester, 15% Polyamid · nylon, 10% Seide · silk, 8% Alpaka · alpaca	165m / 50g	4–5
Filzi	135	90119	100% Schurwolle · virgin wool	50m / 50g	7–8
Finia Tweed Recycled	137	90282	62% Baumwolle (recycled) · cotton, 38% Polyester (recycled) · polyester	150m / 50g	3–3,5
Hit	138	93657	100% Polyacryl · acrylic	135m / 50g	3
Limone	140	90130	100% Baumwolle mercerisiert, gasiert · cotton	125m / 50g	3–3,5
Limone Color	143	90131	100% Baumwolle mercerisiert, gasiert · cotton	125m / 50g	3–3,5
Manuela Häkelgarn No 5	144	93409	100% Baumwolle gekämmt, mercerisiert, gasiert · cotton	200m / 50g	1,75–2
Manuela Häkelgarn No 10	144	93410	100% Baumwolle gekämmt, mercerisiert, gasiert · cotton	280m / 50g	1,25–1,5
Manuela Häkelgarn No 15	144	93411	100% Baumwolle gekämmt, mercerisiert, gasiert · cotton	330m / 50g	1–1,25
Manuela Häkelgarn No 20	144	93412	100% Baumwolle gekämmt, mercerisiert, gasiert · cotton	400m / 50g	0,75–1
Manuela Perlgarn No 5	146	82510	100% Baumwolle gekämmt, mercerisiert, gasiert · cotton	200m / 50g	
Manuela Perlgarn No 15	146	82520	100% Baumwolle gekämmt, mercerisiert, gasiert · cotton	70m / 10g	
Manuela Gold & Silber metallisiert	147	90072	85% Viskose · viscose, 15% Polyester metallisiert · polyester	110m / 25g	2,5–3
Puppengarn	148	93913	74% Mohair · mohair, 17% Wolle · wool, 9% Polyamid · nylon	50m / 50g	7–8
Record 210	149	90173	100% Baumwolle · cotton	90m / 50g	4–4,5
Record 210 Color	151	90172	100% Baumwolle · cotton	90m / 50g	4–4,5
Soft Touch	152	90283	80% Polyacryl · acrylic, 20% Wolle · wool	235m / 100g	4–4,5
Tropic Cotton	153	90287	100% Baumwolle (Organic) · cotton	600m / 150g	2,5–3,5
Wollfrauen	154	91210	100% Merino-Schurwolle (Superwash) · virgin wool	300m / 50g	2,5–3
Zimba Fix	155	90138	80% Schurwolle (Superwash) · virgin wool, 20% Polyamid · nylon	87m / 50g	3,5–4
Zimba Medium	155	90139	80% Schurwolle (Superwash) · virgin wool, 20% Polyamid · nylon	125m / 50g	3,5
Zimba Top	155	90137	80% Schurwolle (Superwash) · virgin wool, 20% Polyamid · nylon	150m / 50g	2,5–3
Zimba Fix Color	157	90140	80% Schurwolle (Superwash) · virgin wool, 20% Polyamid · nylon	87m / 50g	3,5–4

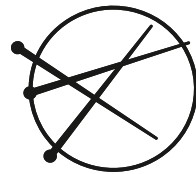


Kategorien · categories

Kategorie · category	Marke · brand	Qualität · quality	Art.-Nr. · quality-no.	Seite · page		
Reine Baumwolle (100% Baumwolle) · pure cotton	Austermann	Bio Cotton	98299	54		
		Bio Cotton Color	98300	56		
		Bio Cotton 125	90345	57		
		Ecopure Organic Cotton	90334	58		
		Fantasy Color	90327	60		
	Schoeller + Stahl	Limone	90130	140		
		Limone Color	90131	143		
		Manuela Häkelgarn No 5	93409	144		
		Manuela Häkelgarn No 10	93410	144		
		Manuela Häkelgarn No 15	93411	144		
		Manuela Häkelgarn No 20	93412	144		
		Manuela Perlgarn No 5	82510	146		
		Manuela Perlgarn No 15	82520	146		
		Record 210	90173	149		
		Record 210 Color	90172	151		
		Tropic Cotton	90287	153		
		Baumwollmischungen · cotton blends	Austermann	Antea Soft	90308	52
				Denim Melange	90305	75
Flake Dance	90332			78		
Playa Organic Cotton	90307			93		
Provence Color	90304			94		
Silk Cotton	90301			96		
Coleen Linen	90313			73		
Eila	90314			77		
Schoeller + Stahl	Bambou Cotton		90286	132		
	Finia Tweed Recycled		90282	137		

Schurwolle · virgin wool	Austermann	Merino 160	97610	85
		Merino 160 Color	97611	87
		Merino 120	97613	50
		Merino 105	97612	88
		Merino 85	97614	90
		Merino Lace	97615	107
	Schoeller + Stahl	Baby Merino	93429	125
		Baby Merino Color	93457	127
		Wollfrauen	91210	154
		Filzi	90119	135
Alpaca	Austermann	Akina	90322	47
		Alpaca Cotton	90310	67
		Alpaca Fluffy	98321	68
		Alpaca Love	90312	69
		Alpaca Silk	90333	70
		Biola	98258	53
		Briana Alpaca & Cotton	90319	48
		Svea	90316	97
Cashmere	Austermann	Cashmere Cloud	90349	72
		Eco Cashmere	90311	76
Mohair	Austermann	Kid Silk	98233	79
		Kid Silk Degrade	98309	81
	Schoeller + Stahl	Puppengarn	93913	148
Seide · silk	Austermann	Magic Silk	98206	82
		Magic Silk Color	98207	83
Wollmischungen · wool blends	Austermann	Camel & Wool	90343	71
		Cornwall Linen	90342	74
		Fairshine	90339	59
		Maila Multicolor	90309	84
		Maxin	90320	49
		Merino Cotton	98311	61
		Merino Cotton Color	90348	63
		New Murano	90288	111
		Runa	90352	95
		Wooly Shine	90351	98
		Raindrops Degradé	90324	108

	Schoeller + Stahl	Allround	90037	122
		Alpha	90088	124
		Baby Mix	90166	130
		Baby Mix Color	91271	131
		Chic & Warm	90179	133
		Cosy Tweed	90284	134
		Soft Touch	90283	152
		Zimba Fix	90138	155
		Zimba Medium	90139	155
		Zimba Top	90137	155
		Zimba Fix Color	90140	157
Strumpfgarne · sock yarns	Austermann	Step 4 Merino 4-fach Uni & Melangen	90317	64
		Step 4 Merino Color 4-fach	90318	65
		Step 6 Merino Color 6-fach	90337	66
		Step 4-fach Color	97689	99
		Step 6-fach Color	97825	101
		Step 6-fach Color Aufmachung im Kuchenknäuel	97826	102
		Step 4-fach Classic Uni	98214	104
		Step 6-fach Classic Uni	97693	106
	Schoeller + Stahl	Fortissima 4-fach Uni	90038	112
		Fortissima Color	90028	116
		Fortissima Color Mexiko	90016	118
		Fortissima Color 6 fach	90008	119
		Fortissima 6-fach TWEED-Effekt	90007	120
Spezialgarne · special yarns	Austermann	Pailletten	98201	92
	Schoeller + Stahl	Fortissima Beilaufgarn	90330	114
		Manuela Gold & Silber Metall	90072	147
Acryl · acrylic	Schoeller + Stahl	Baby Happy	90279	128
		Baby Happy Color	90280	129
		Hit	93657	138



**AUSTERMANN
WOLLE**

schoeller+stahl
GANZ SCHÖN KREATIV

Design- Inspirationen

Design inspiration

Mod. 24057
col. 06



Akina

Die Kombination aus Schurwolle (Merino) superfine und Baby Alpaka sorgt für ein angenehmes Tragegefühl und hält gleichzeitig schön warm. Die dezenten Farbverläufe Ton-in-Ton verleihen jedem Projekt eine besondere Note und machen es zu einem echten Hingucker. Ideal für Accessoires wie Schals und Tücher, sowie Pullover mit plakativen Muster.

Liefertermin: ab Juli 2024

The combination of superfine virgin wool (Merino) and baby alpaca ensures a comfortable fit and keeps you warm at the same time. The subtle tone-on-tone color gradients give every project a special touch and make it a real eye-catcher. Ideal for accessories such as scarves and shawls, as well as sweaters with striking patterns.

Available: from July 2024

Merinowolle
und Alpaka
Merino wool
and alpaca



Mod. 24060
col. 01, 07



Mod. 24062
col. 03

Mod. 24061
col. 03



Mod. 24058
col. 05

Akina

Weiches, voluminöses Farbverlaufsgarn aus hochwertigen Naturfasern. Die Mischung besteht aus 52 % Schurwolle superfine, 30 % Baby Alpaka und 18 % Polyester. In 8 modischen Farbkombinationen.

Soft, voluminous gradient yarn made from high-quality natural fibers. The mixture consists of 52 % virgin wool superfine, 30 % baby alpaca and 18 % polyester. In 8 fashionable color combinations.

Mod. 24059
col. 03,04,05, 06



Briana

Briana ist ideal für umfangreiche Strickarbeiten wie Jacken, Mäntel und Pullover, die leicht sein müssen. Ebenso hervorragend geeignet für kleinere, schnelle Projekte wie Schals, Loops und ähnliches. Dieses Naturgarn gibt es in 8 trendigen Farbtönen.

Liefertermin: ab Juli 2024

Briana is perfect for large knitting projects such as jackets, coats, and sweaters, which need to be lightweight. It's also great for quick mini-projects like scarves, loops, and the like. This natural yarn is available in 8 fashionable colors.

Available: from July 2024



100 %
Naturfasern
100 %
Natural fibers



Mod. 24052
col. 08

Mod. 24055
col. 04, 05



Mod. 24056
col. 01 - 06

Briana

Das leichte fluffige Knäuel besteht aus feinsten Alpaca (51 %) und Baumwolle (49 %). So weich und kuschelig wie eine Wolke! Das Garn ist voluminös, was zu einem sehr sparsamen Materialverbrauch führt – ein Traum für jeden Strick- und Häkelfan.

Light and voluminous yarn with low material consumption. Soft and cosy in 8 colour combinations. Fibre content: 51 % alpaca, 49 % cotton.



Mod. 24054
col. 06



Mod. 24053
col. 05, 06
07, 08



Mod. 24051
col. 07

Moderner Look
aus reiner Wolle
Modern look
made from
pure wool



Mod. 24065
col. 05

Maxin

Das hochwertige Dochtgarn besteht zu 100 % aus Naturfasern und ist eine Mischung aus Merino-Schurwolle superfine und edler Tussahseide. Es handelt sich um ein Garn mittlerer Stärke und ist in 14 Farben erhältlich. Dank der edlen Wollmischung hat das Garn einen wunderbar weichen und luxuriösen Griff. Es trägt sich angenehm auf der Haut und verleiht den Projekten einen edlen Look.

Liefertermin: ab Juli 2024

The high-quality worsted yarn is made from 100 % natural fibers and is a blend of superfine Merino wool and exquisite Tussah silk. It is a medium-weight yarn available in 14 colors. Thanks to the luxurious wool blend, the yarn has a wonderfully soft and luxurious feel. It is comfortable to wear on the skin and gives projects an elegant look.

Available: from July 2024

Luxus für
deine Haut
Luxury for
your skin

Mod. 24068
col. 12

Austermann
Maxin





Mod. 24070
col. 06



Mod. 24066
col. 10



Mod. 24067
col. 11



Mod. 24069
col. 01, 04, 05, 06

Mod. 24073
col. 104, 110, 169



Merino 120

Ein zeitloser Favorit aus erstklassiger Merinowolle. Das Garn ist zu 100 % aus Schurwolle (Merino superfine) gefertigt und zeichnet sich durch eine nachhaltige und chlorfreie Verarbeitung des Rohmaterials aus. Das umweltfreundliche Verfahren minimiert den Einsatz von Chemikalien, was zu einem nachhaltigen Umweltschutz beiträgt. Merino 120 ist zudem Ökotex-zertifiziert.

Liefertermin: ab Juli 2024

A timeless favorite made from high-quality merino wool. The yarn is crafted from 100 % virgin wool (Merino superfine) and is characterized by a sustainable and chlorine-free processing of the raw material. The process minimizes the use of chemicals, contributing to sustainable environmental protection. Additionally, Merino 120 is Ökotex certified and superwash.

Available: from July 2024

NEU in 120 m
Lauflänge

NEW in 120 m
running length



Mod. 24075
col. 123



Mod. 24076 + 24077
col. 110



Mod. 24072
col. 169

Merino 120

Das Garn besteht aus 100 % Schurwolle (Merino superfine) – neu in 120 Meter Lauflänge.

Fibre Content: 100 % virgin wool – new in 120 metres running length.

Mod. 24071
col. 110



Mod. 24044
col. 01

Mod. 24049
col. 01



New Murano

Weiches Dochtgarn aus Schurwollmischung als Multicolorgarn mit wunderschönen Farbverläufen. Zusammensetzung: 53 % Schurwolle, 47 % Polyacryl. New Murano ist ideal für Strick- oder Häkelanfänger und erfreut mit dem schnellen Vorankommen mit dicken Nadeln. Die Garnqualität ist für warme Winterbekleidung und Deko-Accessoires für Zuhause wie Decken und Kissen gut geeignet. Eine Anleitung für ein Desgin ist auf die Innenseite der Banderole gedruckt.

Liefertermin: ab Juli 2024

Soft roving yarn made from a wool blend as a multicolor yarn with beautiful color gradients. Composition: 53 % virgin wool, 47 % acrylic. New Murano is perfect for knitting or crochet beginners and delights with quick progress using thick needles. The yarn quality is well suited for warm winter clothing and home decor accessories like blankets and pillows. Instructions for a design are printed on the inside of the label.

Available:
from July 2024

Ideal für
Anfänger
Ideal for
beginners

Mod. 24048
col. 06

Schoeller +
Stahl

New
Murano



Mod. 24047
col. 03



Mod. 24046
col. 05



Mod. 24047 +
24045 col. 03



Mod. 24044
col. 04



Mod. 24050
col. 04



Step

Dieses Sockengarn ist mit den Pflegezusätzen Aloe Vera und Jojoba ausgerüstet. Dadurch entsteht der besondere kaschmirartige, weiche Griff. Das Garn ist für sensible Hauttypen geeignet. Aus der Step werden nicht nur Socken, sondern auch Pullover und Jacken für Groß und Klein gestrickt und gehäkelt. Zusammensetzung: 75 % Schurwolle, 25 % Polyamid


This sock yarn is enhanced with Aloe Vera and Jojoba, creating its unique cashmere-like, soft feel. The yarn is suitable for sensitive skin types. From Step, not only socks are made but also sweaters and jackets for both adults and children are knitted and crocheted. Composition: 75 % virgin wool, 25 % polyamide.

Weich wie
Kaschmir
Soft as
cashmere

Step 4 Merino

Ein absolutes „must have“! GOTS kombiniert mit der chlorfreien Filzfreieiausrüstung, dem einzigen Verfahren, welches GOTS zertifizierbar ist. Weich und edel durch 100 % Merinowolle aus kontrolliert biologischer Tierhaltung. Das Garn läuft geschmeidig über die Nadeln und lässt sich dank der bewährten Verzwinung problemlos stricken und häkeln. Es ist voll waschbar und Trockner geeignet. Das Garn ist universell einsetzbar: Es ist besonders für Kinder- und Babymodelle, wie auch für Socken und Accessoires geeignet.

An absolute „must-have“! GOTS combined with the chlorine-free, felt-free finish, the only process certifiable by GOTS. Soft and luxurious due to 100 % organic Merino wool from controlled biological animal husbandry. The yarn glides smoothly over the needles and is easy to knit and crochet, thanks to the proven twist. It is fully washable and suitable for the dryer. The yarn can be used universally: It is especially suitable for children's and baby items, as well as for socks and accessories.



Brilliante
Farbverläufe
Brilliant
gradients





Step 6

Dieses Original-Sockengarn mit Farbmuster ist für größere Nadeln gesponnen. Ebenfalls wie Step ist auch Step 6 mit Pflegezusatz Aloe Vera und Jojoba in Permanentausrüstung verarbeitet, was für ein kaschmirartigen, weichen Griff sorgt. Das Garn ist für sensible Haut geeignet. Nicht nur Socken, sondern auch Pullover und Jacken für Groß und Klein werden aus Step gestrickt und gehäkelt. Zusammensetzung: 75 % Schurwolle, 25 % Polyamid.

This original color pattern sock yarn is spun for larger needles. Like Step, Step 6 is also processed with care additives aloe vera and jojoba in a permanent finish, which ensures a cashmere-like, soft feel. The yarn is suitable for sensitive skin. Not only socks, but also sweaters and jackets for young and old are knitted and crocheted from step. Composition: 75 % virgin wool, 25 % polyamide.

Bunte Muster
Colorful
patterns



Alpaca Cotton

Mit einer einzigartigen Mischung aus feinsten Alpakafasern (51 %) und hochwertiger Baumwolle (49 %) bietet Alpaca Cotton ein Strickerlebnis, das die Sinne verzaubert.

With a unique blend of finest alpaca fibers (51 %) and high-quality cotton (49 %), Alpaca Cotton offers a knitting experience that enchants the senses.

Alpaca Love

Farbverlaufsgarn aus Alpaka superfine (98 % Alpaka superfine, 2 % Polyester (Elité)). Die Wollmischung fühlt sich sehr weich und anschmiegsam an. Der schnelle Strickerfolg mit dicken Nadeln ist garantiert.

Gradient yarn made from superfine alpaca (98 % superfine alpaca, 2 % polyester (Elité)). The wool blend feels very soft and cuddly. Quick knitting success with thick needles is guaranteed.



Alpaca –
Luxus pur
Alpaca –
Pure luxury



Merino Cotton

Diese hochwertige Mischung aus Merinowolle und Baumwolle ist GOTS-Zertifiziert. Ein feines Lacegarn für Sommermode und Kleidung mit Lochmuster. Perfekt für Oberteile, die direkt an der Haut getragen werden. Für Baby- und Kindermode empfehlenswert. Das Garn ist zum Häkeln geeignet. Zusammensetzung: 55 % Schurwolle (organic Merino-Lambswool), 45 % Baumwolle (organic).

This high-quality blend of merino wool and cotton is GOTS certified. A fine lace yarn for summer fashion and clothing with a lace pattern. Perfect for tops that are worn next to the skin. Recommended for baby and children's fashion. The yarn is suitable for crocheting. Composition: 55 % virgin wool (organic Merino Lambswool), 45 % cotton (organic).

Für die Kleinsten
nur das Beste
Only the best for
the little ones

Bio Cotton Color

Feinste organische Baumwolle für anspruchsvolle Handarbeiten mit Nadelstärken von 2,5 bis 3,5 mm. Diese hochwertige Baumwolle zeichnet sich durch ihre erstklassige Qualität aus und ist GOTS zertifiziert, was für eine nachhaltige und umweltfreundliche Produktion steht. Das Garn eignet sich besonders gut für die Herstellung von Babymodellen, da es sanft zur empfindlichen Babyhaut ist.

Finest organic cotton for sophisticated handcrafts with needle sizes from 2.5 to 3.5 mm. This high-quality cotton is distinguished by its premium quality and is GOTS certified, indicating sustainable and environmentally friendly production. The yarn is particularly suitable for making baby models, as it is gentle on the sensitive skin of babies.

Von Anfang an
Naturverbunden

From the start,
in tune with
nature



Unsere Garne aus nachhaltiger Verarbeitung ohne Chlor

Innovationen von Schoeller Handstrickgarn

Aus unseren gemeinsamen Wurzeln mit der Schoeller Spinnerei Gruppe sind unsere Garne entwickelt worden, welche die volle Maschinenwaschbarkeit von Wolle nach Superwash-Standard (5x 5A) erreichen, ohne die sonst übliche Chlorbelastung, also dem Wegfall von Schadstoffbelastung (AOX) bei der sonst üblichen, herkömmlichen Wollausrüstung.

Mit dieser Innovation setzt Schoeller einen Meilenstein und bestätigt einmal mehr seine ökologische Ausrichtung. Dieses Verfahren ist die einzige Wollausrüstungstechnologie zu Filzfriausrüstung von Wolle, welches die strengen Kriterien des Global Organic Textile Standards (GOTS) erfüllt.



Our yarns from sustainable processing without chlorine

Innovations from Schoeller Handknitting Yarn

Developed from our shared roots with the Schoeller Spinnerei Group, our yarns have been created to achieve full machine washability of wool according to Superwash standards (5x 5A), without the usual chlorine impact, thus eliminating pollutant load (AOX) in the conventional wool finishing process.

With this innovation, Schoeller is setting a milestone and once again confirming its ecological orientation. This process is the only wool finishing technology for felt-free wool that meets the strict criteria of the Global Organic Textile Standard (GOTS).

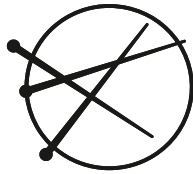


Nachhaltigkeit
für die Zukunft
Sustainability
for the Future

- 🌿 Nachhaltig & natürlich
- 🌿 Chlorfrei
- 🌿 Weniger Chemikalien
- 🌿 Spart Wasser
- 🌿 Maschinenwaschbar
- 🌿 Trocknergeeignet

- 🌿 Sustainable & Natural
- 🌿 Chlorine-free
- 🌿 Less chemicals
- 🌿 Saves water
- 🌿 Machine washable
- 🌿 Suitable for tumble drying





**AUSTERMANN
WOLLE**



Akina 140322-..

Art.-Nr. · quality-no.: 90322
 Kategorie · category: Alpaca

Material · blend: **52% Schurwolle (Superfine)** · virgin wool,
30% Alpaka (Baby) · alpaca, **18% Polyester** · polyester



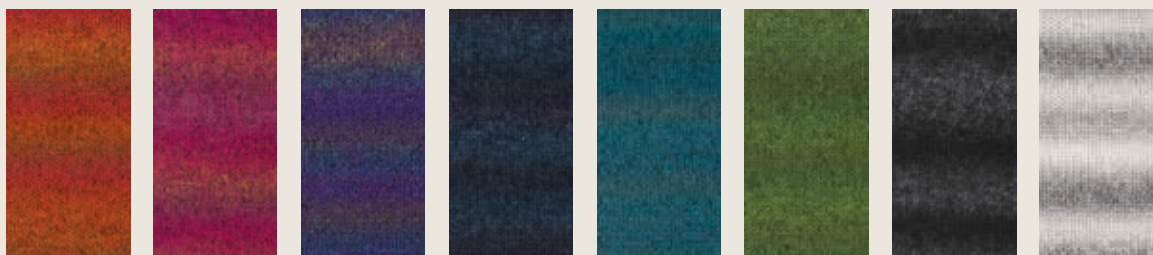
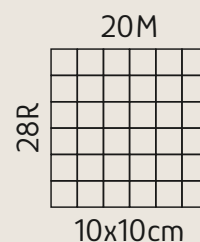
Lauflänge · running length: ca. 135m / 50g
 10x50g in 500g Polybeutel · polybag



38M = 500g



4 – 5



01 ahorn

02 himbeere

03 pflaume

04 nachtblau

05 petrol

06 moos

07 anthrazit

08 silber



neu
new

Briana Alpaca & Cotton 140319-..

Art.-Nr. · quality-no.: 90319
Kategorie · category: Alpaca

Material · blend:

51% Alpaka · alpaca, **49% Baumwolle** · cotton



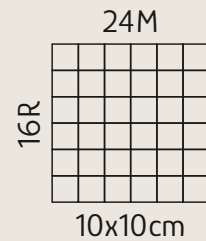
Lauflänge · running length: ca. 165m / 50g
10x50g in 500g Polybeutel · polybag



38M = 350g



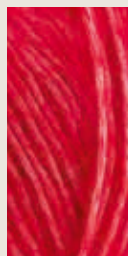
4 – 5



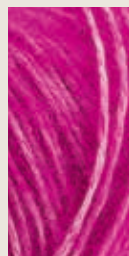
01
gelb



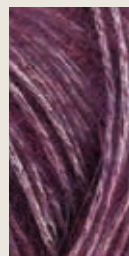
02
orange



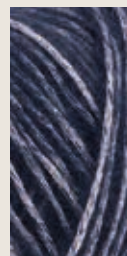
03
rot



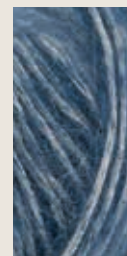
04
cyclam



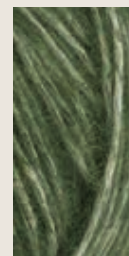
05
brombeer



06
navy



07
jeans



08
oliv



neu
new

Maxin Merino & Seide 140320-..

Art.-Nr. · quality-no.: 90320

Kategorie · category: Wollmischungen · wool blends

Material · blend: **80% Schurwolle (Superfine)** · virgin wool,
20% Seide Tussah · silk tussah



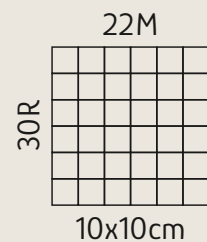
Lauflänge · running length: ca. 150m / 50g
10x50g in 500g Polybeutel · polybag



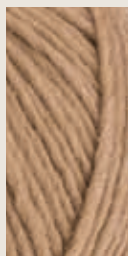
38M = 400g



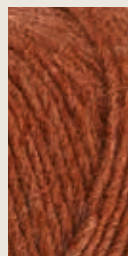
3 – 4



01
natur



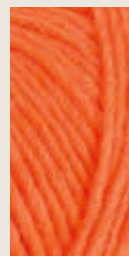
05
camel



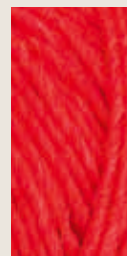
06
zimt



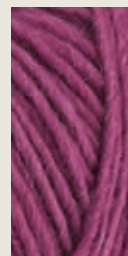
07
gold



08
orange



03
rot



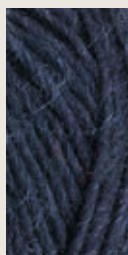
09
beere



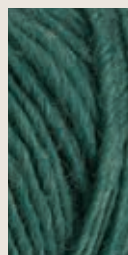
10
eisblau



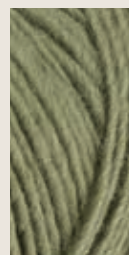
11
meer



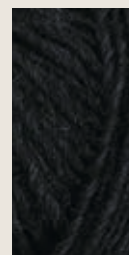
04
marine



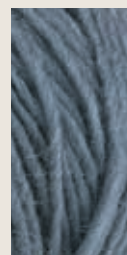
12
tanne



13
oliv



02
schwarz



14
grau



Merino 120 157613-..

Art.-Nr. · quality-no.: 97613

Kategorie · category: Schurwolle · virgin wool

Material · blend:

100% Merinowolle (Superfine) · merino wool



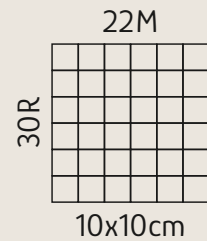
Lauflänge · running length: ca. 120m / 50g
10x50g in 500g Karton · cardboard box



38M = 550g

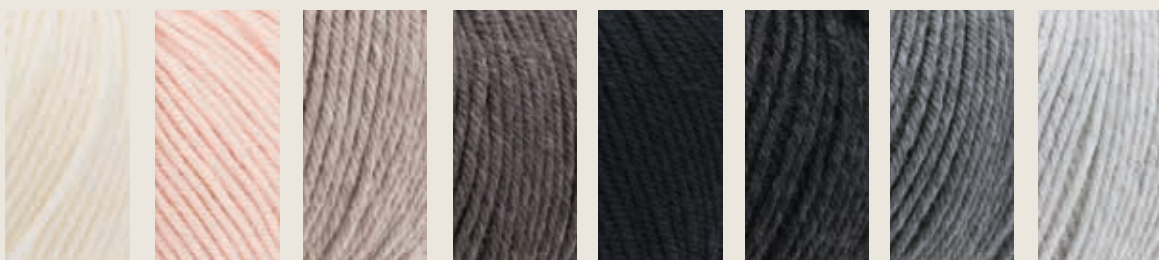


3,5 – 4,5

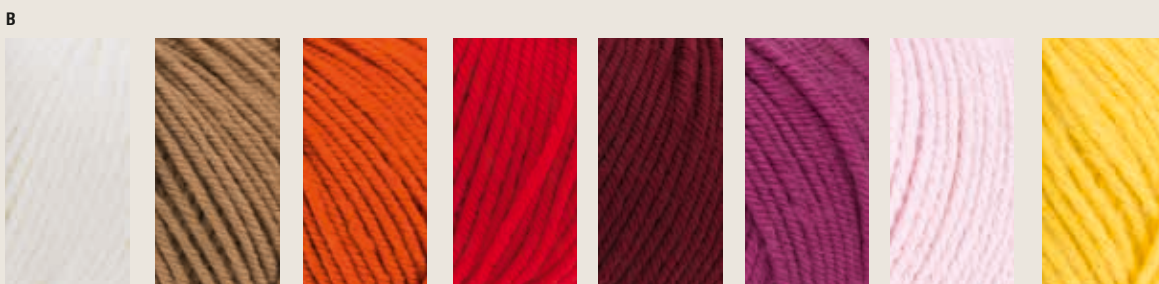


26 Farben · colors

- 101 B/01
- 102 A/05
- 103 B/04
- 104 C/06
- 110 A/01
- 121 C/04
- 123 C/08
- 128 A/08
- 129 A/07
- 132 C/07
- 133 D/01
- 134 A/06
- 137 A/03
- 138 A/04
- 140 C/03
- 141 B/06
- 155 B/05
- 162 D/02
- 165 C/01
- 166 A/02
- 167 B/03
- 169 B/02
- 170 C/02
- 173 C/05
- 174 B/07
- 175 B/08



- 110 natur
- 166 puder
- 137 beige-meliert
- 138 braun-meliert
- 102 schwarz
- 134 anthrazit-meliert
- 129 grau-meliert
- 128 hellgrau-meliert



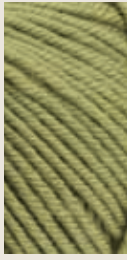
- 101 weiß
- 169 camel
- 167 terra-cotta
- 103 rot
- 155 wein
- 141 pink lipstick
- 174 rosen-quarz
- 175 zitrone

157613-..

c



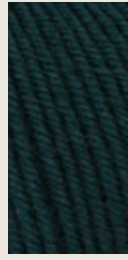
165
safran



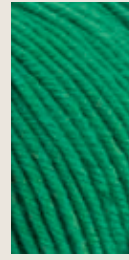
170
oliv



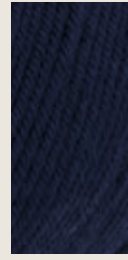
140
absinth



121
tanne



173
gras



104
marine

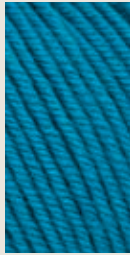


132
royal



123
jeans

d



133
petrol



162
curaçao



Austermann
Merino 120





Antea Soft 158308-..

Art.-Nr. · quality-no.: 90308

Kategorie · category: Baumwollmischungen · cotton blends

Material · blend: **70% Baumwolle (Organic)** · cotton,
18% Schurwolle (Merino extrafine) · virgin wool, **12% Alpaka (Baby)** · alpaca



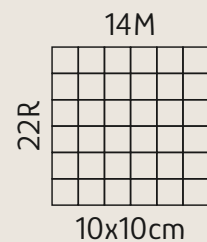
Lauflänge · running length: ca. 100m / 50g
10x50g in 500g Karton · cardboard box



38M = 550g



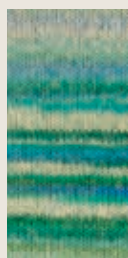
5 – 6



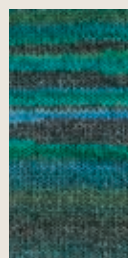
01 dahlie



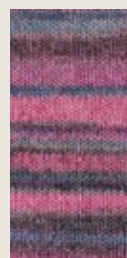
02 kürbis



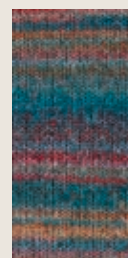
03 avocado



04 pinie



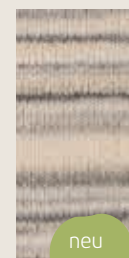
05 cyclam



06 petrol



07 achat



08 stein



Biola 150258-..

Art.-Nr. · quality-no.: 98258
 Kategorie · category: Alpaca

Material · blend:
70% Schurwolle (Organic) · virgin wool, **30% Alpaka** · alpaca



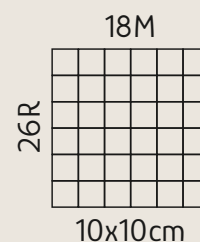
Lauflänge · running length: ca. 112m / 50g
 10x50g in 500g Karton · cardboard box



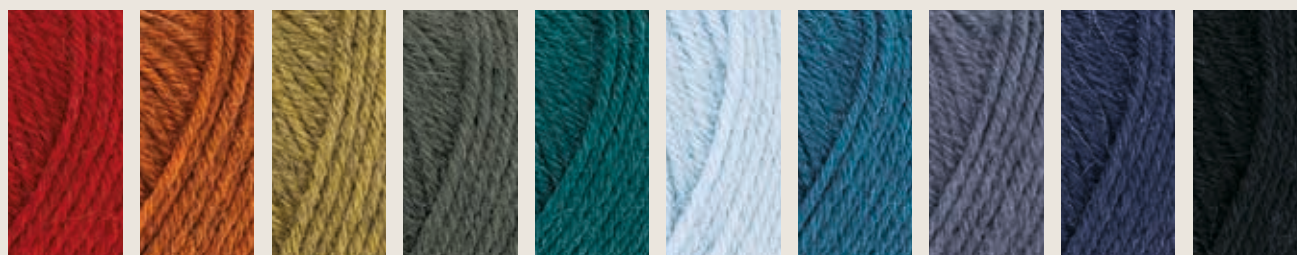
38M = 550g



4 – 5



01 wollweiß 05 sand-meliert 06 beige-meliert 07 braun-meliert 10 silber-meliert 09 grau-meliert 08 anthrazit-meliert 12 krokus* 13 rosé 14 bordeaux



03 rot 15 kürbis 16 senf 17 oliv 18 lagune 11 bleu 19 petrol 20 jeans 04 dunkelblau 02 schwarz

* Nur solange Vorrat reicht · Only while stocks last



VEGAN
1 0 0 %



Certified by CU 845890

Bio Cotton 150299-..

Art.-Nr. · quality-no.: 98299

Kategorie · category: Reine Baumwolle · pure cotton

Material · blend:

100% Baumwolle (Organic) · cotton



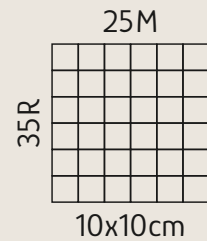
Lauflänge · running length: ca. 180m / 50g
10x50g in 500g Karton · cardboard box



38M = 400g



2,5 – 3,5



25 Farben · colors

- 02 C/09
- 03 A/08
- 04 C/08
- 05 A/02
- 06 A/03
- 07 A/04
- 08 B/08
- 09 B/07
- 10 A/01
- 11 B/06
- 12 B/05
- 13 B/03
- 14 A/05
- 15 A/06
- 16 A/07
- 17 C/02
- 18 C/01
- 19 C/06
- 20 C/07
- 21 B/01
- 22 B/02
- 23 B/04
- 24 C/04
- 25 C/03
- 26 C/05

A



10 natur 05 leinen 06 taupe 07 graumeliert 14 rosé 15 pink 16 flieder 03 rot

B



21 koralle 22 mandarine 13 orange* 23 mais 12 mimose 11 apfel 09 gras 08 mint

150299-..

c



18
aqua

17
türkis

25
fjord

24
petrol

26
hellblau

19
himmel

20
azur

04
marine

02
schwarz

* Nur solange Vorrat reicht · Only while stocks last



Austermann
Bio
Cotton



VEGAN
100%



Certified by CU 845890

Bio Cotton Color 150300-..

Art.-Nr. · quality-no.: 98300

Kategorie · category: Reine Baumwolle · pure cotton

Material · blend:

100% Baumwolle (Organic) · cotton



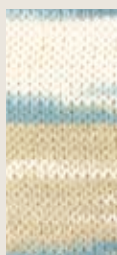
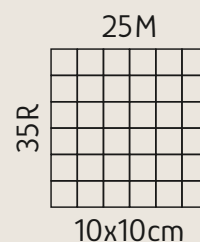
Lauflänge · running length: ca. 180m / 50g
10x50g in 500g Karton · cardboard box



38M = 400g



2,5 – 3,5



101 sand



107 fresie



105 magnolie



108 perle



106 papaya



109 vintage



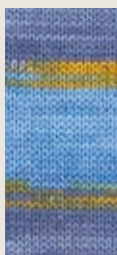
102 jeans



103 pool



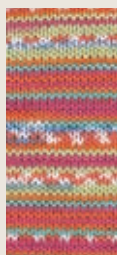
104 provence



110 saphir



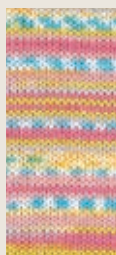
111 lagune



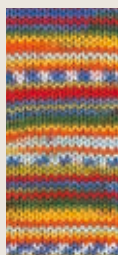
112 florida



113 karibik



114 candy



115 papagei



116 türkis



117 pastell



Bio Cotton 125 150345-..

Art.-Nr. · quality-no.: 90345

Kategorie · category: Reine Baumwolle · pure cotton

Material · blend:

100% Baumwolle (Organic) · cotton



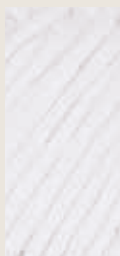
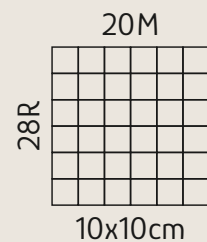
Lauflänge · running length: ca. 125m / 50g
10x50g in 500g Karton · cardboard box



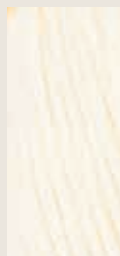
38M = 500g



3 – 4



16
weiß



01
natur



05
beige



18
mokka



17
silber



06
puder



10
flieder



12
orchidee



03
rot



07
pistazie



11
mais



15
apfel



08
mint



14
lagune



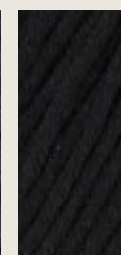
09
himmel



13
blau



04
marine



02
schwarz



Ecopure Organic Cotton 150334-..

Art.-Nr. · quality-no.: 90334
 Kategorie · category: Reine Baumwolle · pure cotton

Material · blend:
100% Baumwolle (Organic) · cotton



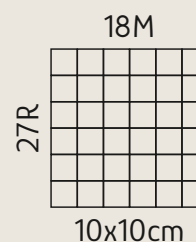
Lauflänge · running length: ca. 115m / 50g
 10x50g in 500g Karton · cardboard box



38M = 500g



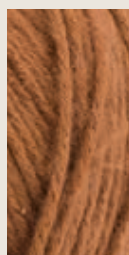
4 – 5



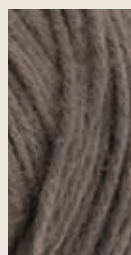
01 natur



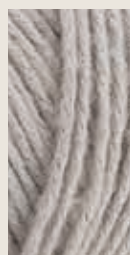
08 sand



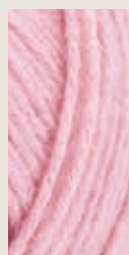
06 zimt



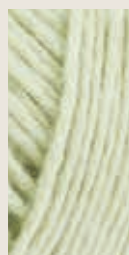
07 schlamm



20 silber



17 rosa



10 pistazie



13 aqua



Fairshine 150339-..

Art.-Nr. · quality-no.: 90339

Kategorie · category: Wollmischungen · wool blends

Material · blend:

70% Schurwolle (Superfine) · virgin wool, **30% Lyocell (Tencel)** · lyocell



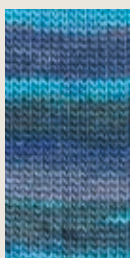
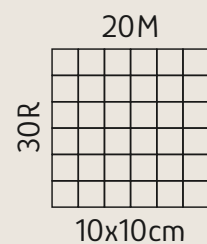
Lauflänge · running length: ca. 280m / 100g
5x100g in 500g Karton · cardboard box



38M = 500g



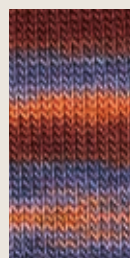
4 – 5



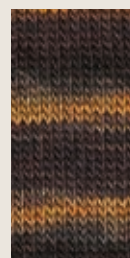
07
saphir



08
herbst



01
achat



02
bronze



03
vulkan



04
wald



05
salbei



06
meer



Fantasy Colours 150327-..

Art.-Nr. · quality-no.: 90327

Kategorie · category: Reine Baumwolle · pure cotton

Material · blend:

100% Baumwolle (Organic) · cotton



Lauflänge · running length: ca. 1000m / 250g
2x250g in 500g Karton · cardboard box



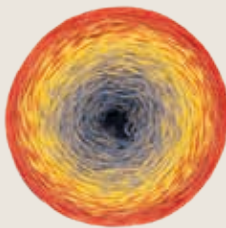
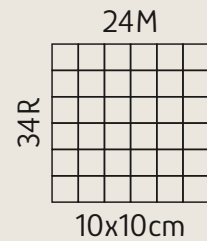
38M = 200g



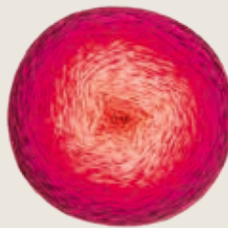
ca. 250g



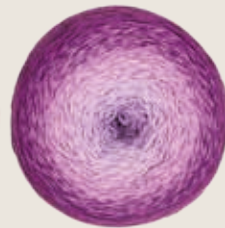
3 – 3,5



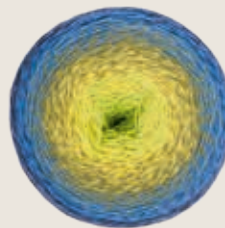
02
feuer



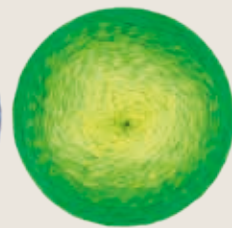
10
granatapfel



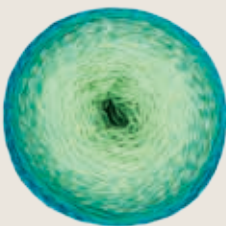
11
clematis



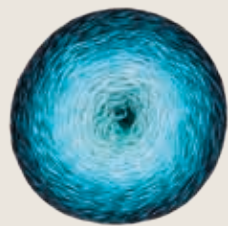
09
botanik



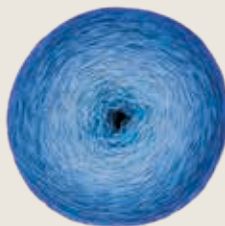
12
paradies



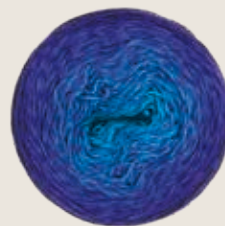
08
mint



05
lagune



04
ozean



13
ultramarin



07
mandel



Merino Cotton 158311-..

Art.-Nr. · quality-no.: 98311

Kategorie · category: Wollmischungen · wool blends

Material · blend: **55% Schurwolle (Organic Merino-Lambswool)** · virgin wool, **45% Baumwolle (Organic)** · cotton



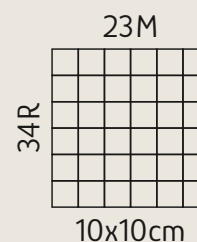
Lauflänge · running length: ca. 230m / 50g
10x50g in 500g Karton · cardboard box



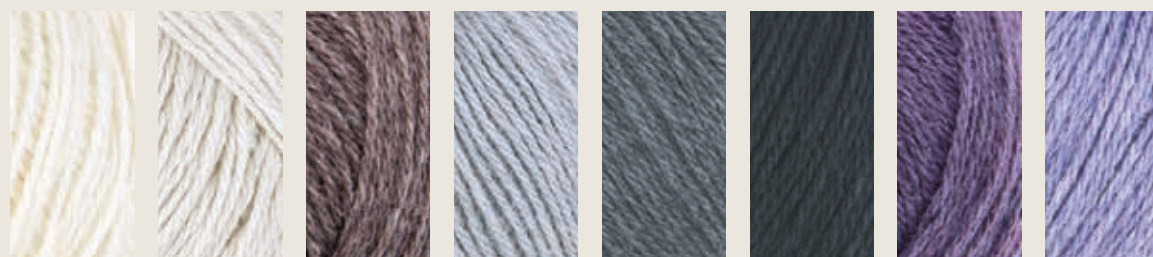
38M = 250g



3 – 4



A



01 natur

10 sand

19 kakao

17 hellgrau

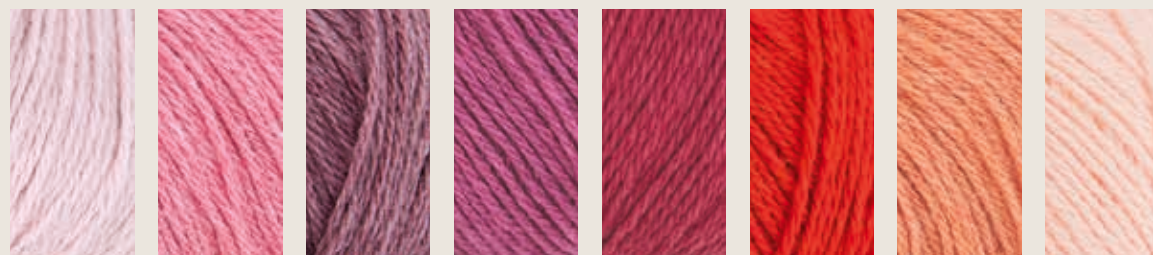
18 dunkelgrau

02 schwarz

21 aubergine*

16 lila

B



05 rosé

06 pink

20 beere

07 fuchsie

03 rot

26 paprika

08 orange

25 apricot

28 Farben · colors

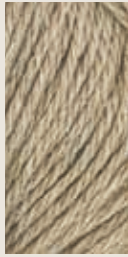
- 01 A/01
- 02 A/06
- 03 B/05
- 04 C/07
- 05 B/01
- 06 B/02
- 07 B/04
- 08 B/07
- 09 C/01
- 10 A/02
- 11 C/02
- 12 D/04
- 13 C/04
- 14 C/05
- 15 C/06
- 16 A/08
- 17 A/04
- 18 A/05
- 19 A/03
- 20 B/03
- 21 A/07
- 22 C/08
- 23 D/02
- 24 D/03
- 25 B/08
- 26 B/06
- 27 C/03
- 28 D/01

158311-..

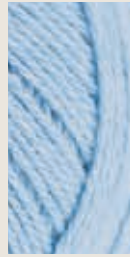
c



09
honig



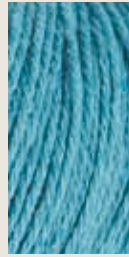
11
muskat



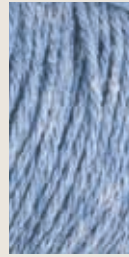
27
hellblau



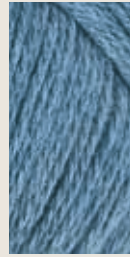
13
türkis



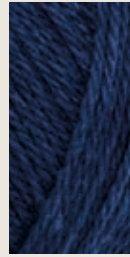
14
lagune



15
jeans

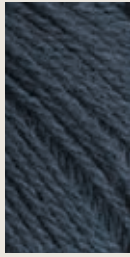


04
blau

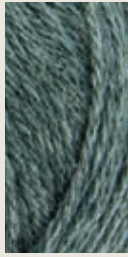


22
indigo

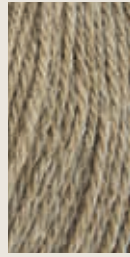
d



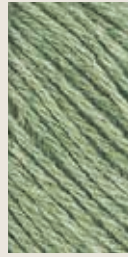
28
navy



23
tanne

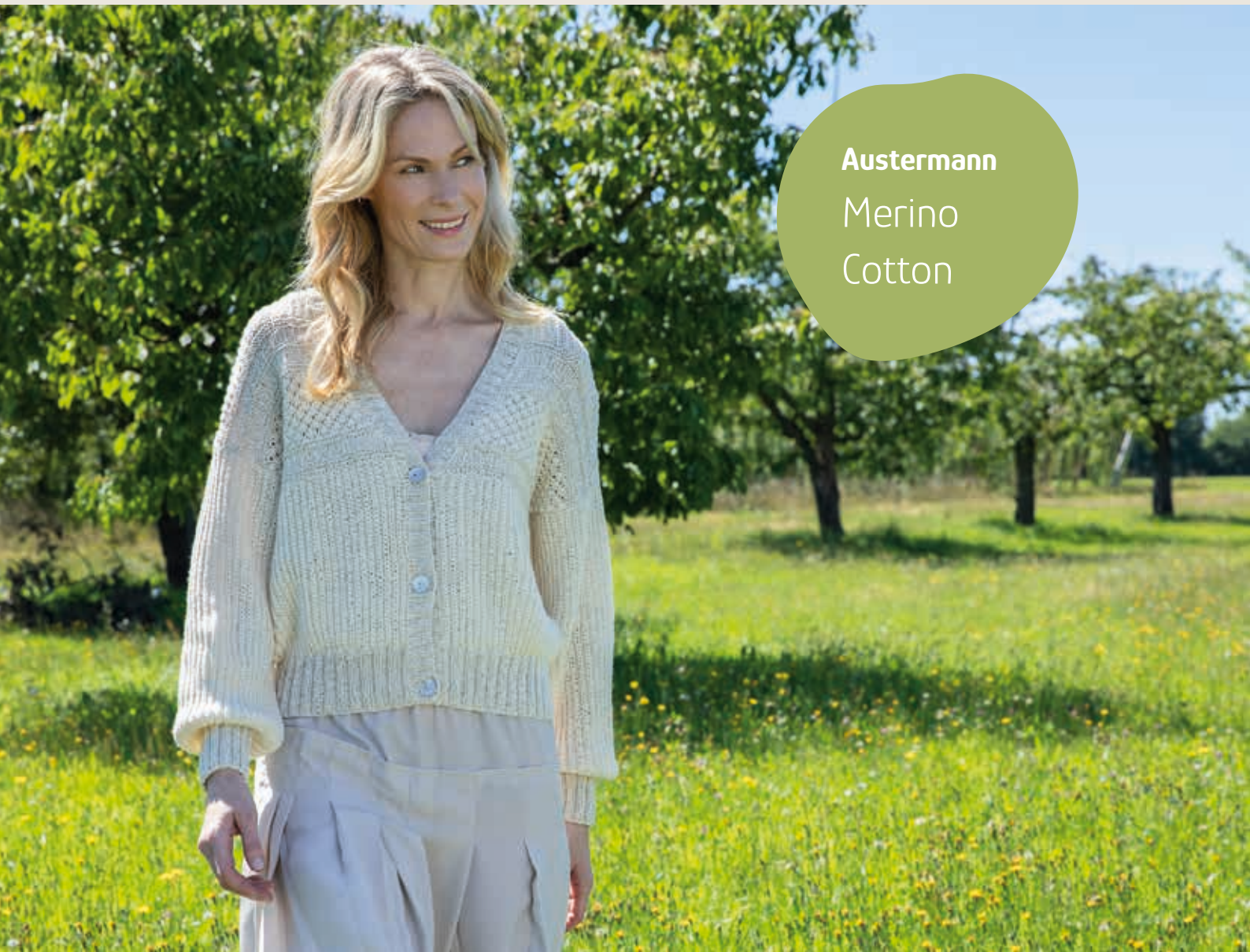


24
oliv*



12
grün

* Nur solange Vorrat reicht · Only while stocks last



Austermann
Merino
Cotton



Merino Cotton Color 150348-..

Art.-Nr. · quality-no.: 90348

Kategorie · category: Wollmischungen · wool blends

Material · blend: **55% Schurwolle (Organic Merino-Lambswool)** · virgin wool,
45% Baumwolle (Organic) · cotton



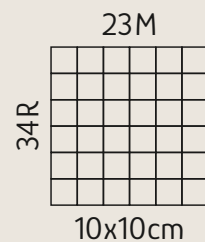
Lauflänge · running length: ca. 230m / 50g
10x50g in 500g Karton · cardboard box



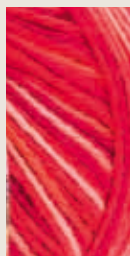
38M = 250g



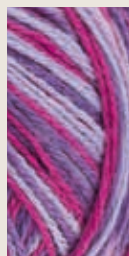
3 – 4



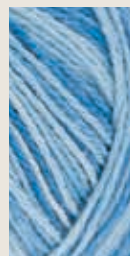
103
granit



102
gerbera



101
orchidee



104
himmel



105
pool



106
apfel



Step 4 Merino 4-fach Uni & Melangen 150317-..

Art.-Nr. · quality-no.: 90317

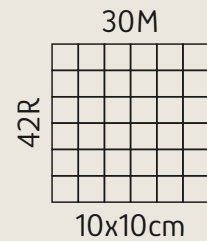
Kategorie · category: Strumpfgarne · sock yarns

Material · blend:

100% Schurwolle (Superwash) · virgin wool



Lauflänge · running length: ca. 400m / 100g
5x100g in 500g Karton · cardboard box



38M = 100g



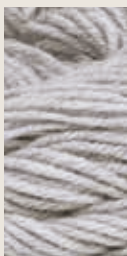
38M = 450g



2,5 – 3



1000 natur



1001 hellgrau melange



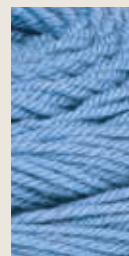
1002 grau melange



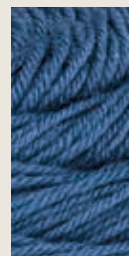
1003 magnolie



1004 curaçao



1005 hellblau



1006 jeans



1007 marine



Step 4 Merino Color 4-fach 150318-..

Art.-Nr. · quality-no.: 90318

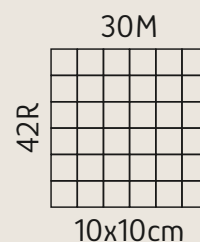
Kategorie · category: Strumpfgarne · sock yarns

Material · blend:

100% Schurwolle (Superwash) · virgin wool



Lauflänge · running length: ca. 400m / 100g
5x100g in 500g Karton · cardboard box



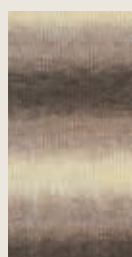
38M = 100g



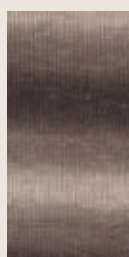
38M = 450g



2,5 – 3



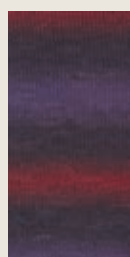
09 beige



02 braun



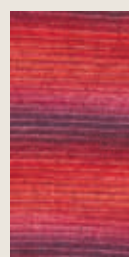
01 grau



05 burgund



12 krokus



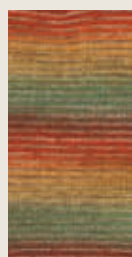
14 beere



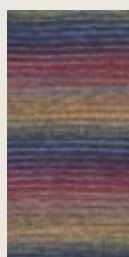
04 dahlie



03 sonne



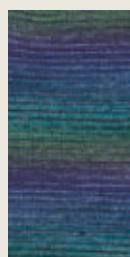
13 herbst



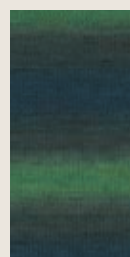
15 jeans



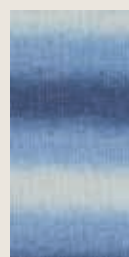
10 jade



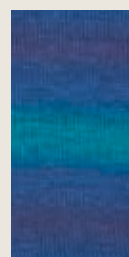
16 nautilus



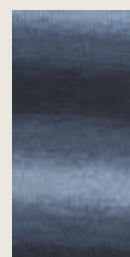
08 smaragd



11 himmel



07 türkis



06 navy



Certified by CU 845890

Step 6 Merino Color 6-fach 150337-..

Art.-Nr. · quality-no.: 90337

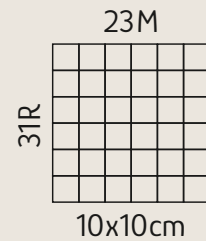
Kategorie · category: Strumpfgarne · sock yarns

Material · blend:

100% Schurwolle (Superwash) · virgin wool



Lauflänge · running length: ca. 400m / 150g
5x150g in 750g Karton · cardboard box



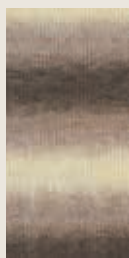
38M = 150g



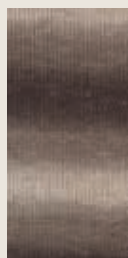
38M = 600g



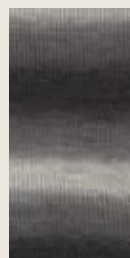
3 - 4



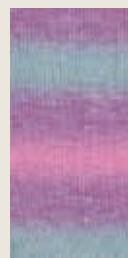
109
beige



102
braun



101
grau



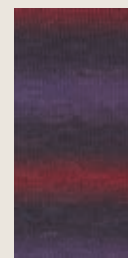
112
krokus



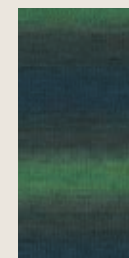
104
dahlie



103
sonne



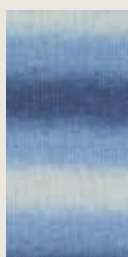
105
burgund



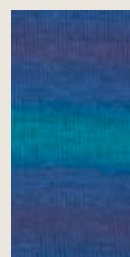
108
smaragd



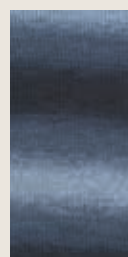
110
jade



111
himmel



107
türkis



106
navy



Alpaca Cotton 158310-..

Art.-Nr. · quality-no.: 90310

Kategorie · category: Alpaca

Material · blend:

41% Alpaka · alpaca, **49% Baumwolle** · cotton



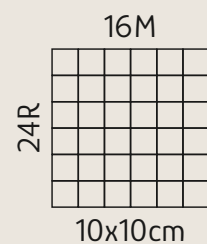
Lauflänge · running length: ca. 165m / 50g
10x50g in 500g Polybeutel · polybag



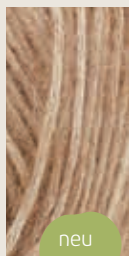
38M = 350g



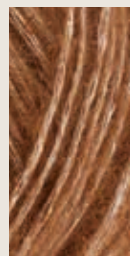
4 – 5



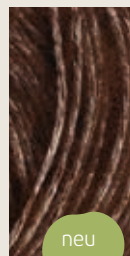
01
creme



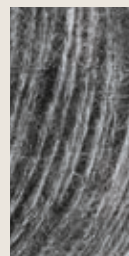
05
camel



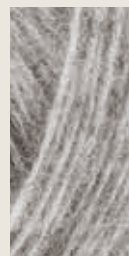
02
haselnuss



06
kaffee



04
grau



03
silber

neu
new

neu
new



Alpaca Fluffy 158321-..

Art.-Nr. · quality-no.: 98321
 Kategorie · category: Alpaca

Material · blend: **70% Schurwolle (Merino, Extrafine)** · virgin wool,
30% Alpaka (Superfine) · alpaca



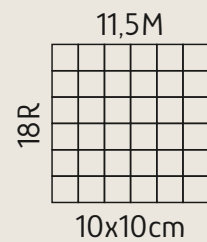
Lauflänge · running length: ca. 85m / 50g
 10x50g in 500g Polybeutel · polybag



38M = 450g



7 – 8



01 wollweiß 17 natur 05 sand 06 schlamm 18 camel* 08 silber 15 schilf 09 grau 20 rosa 10 puder



03 rot 21 rubin 12 beere 13 lila 19 honig 16 birke 07 eis 14 petrol 04 blau 02 schwarz

* Nur solange Vorrat reicht · Only while stocks last



Alpaca Love 150312-..

Art.-Nr. · quality-no.: 90312

Kategorie · category: Alpaca

Material · blend:

98% Alpaka (Superfine) · alpaca, **2% Polyester (Elité)** · polyester



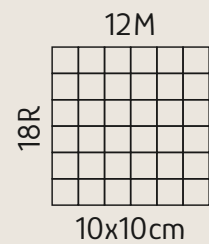
Lauflänge · running length: ca. 60m / 50g
10x50g in 500g Polybeutel · polybag



38M = 600g



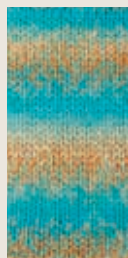
7 – 8



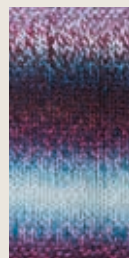
01
dahlie



02
aquarell



03
country



04
plum



05
berry



06
granit



Alpaca Silk 158333-..

Art.-Nr. · quality-no.: 90333
Kategorie · category: Alpaca

Material · blend:
70% Alpaka · alpaca, **30% Seide** · silk

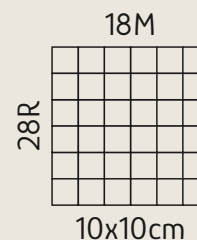


Lauflänge · running length: ca. 210m / 25g
10x25g in 250g Karton · cardboard box



38M = 150g

3 – 4



02 rosenquarz



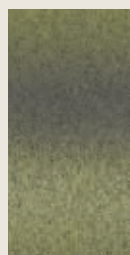
01 camel



07 bernstein



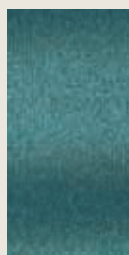
03 beere



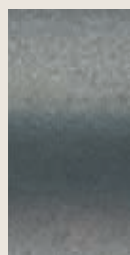
08 jade



04 meer



05 mint



06 rauchgrau



Camel & Wool 150343-..

Art.-Nr. · quality-no.: 90343

Kategorie · category: Wollmischungen · wool blends

Material · blend: **65% Schurwolle (Superfine)** · virgin wool,
20% Camel · camel, **15% Polyamid** · nylon

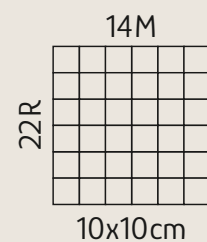


Lauflänge · running length: ca. 180m / 50g
10x50g in 500g Polybeutel · polybag



38M = 350g

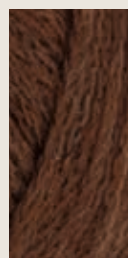
5 – 6



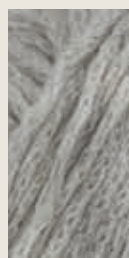
01
wollweiß



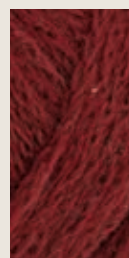
05
camel



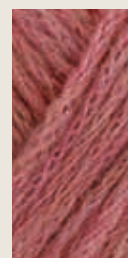
06
cognac



12
silber



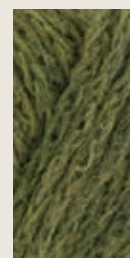
03
wein



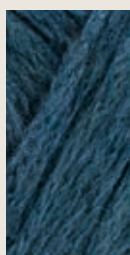
08
rosenholz



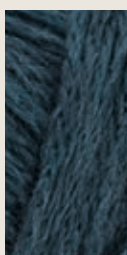
07
gold



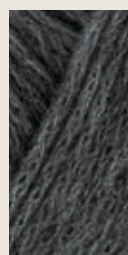
09
oliv



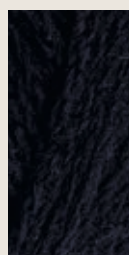
10
petrol



04
blau



11
grau



02
schwarz



Cashmere Cloud 150349-..

Art.-Nr. · quality-no.: 90349
 Kategorie · category: Cashmere

Material · blend: **46% Wolle (Superfein)** · wool, **34% Baumwolle** · cotton,
20% Kaschmir · cashmere



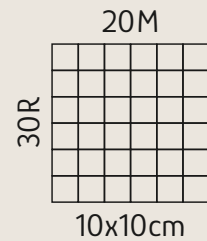
Lauflänge · running length: ca. 180m / 25g
 10x25g in 250g Karton · cardboard box



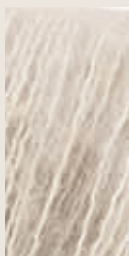
38M = 225g



3 – 4



01 natur



02 beige



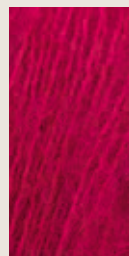
09 zimt



13 rosenholz



03 melone



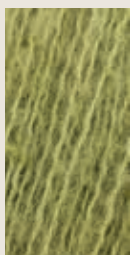
08 kirsche



04 mauve



07 honig



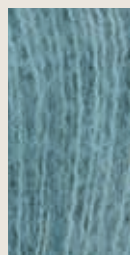
10 laub



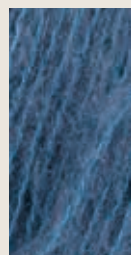
05 eisblau



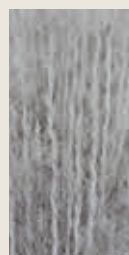
11 türkis



14 fjord



12 blau



06 silber



15 schiefer



Coleen Linen 150313-..

Art.-Nr. · quality-no.: 90313

Kategorie · category: Baumwollmischungen · cotton blends

Material · blend:

60% Leinen · flax, **25% Baumwolle** · cotton, **15% Viskose** · viscose



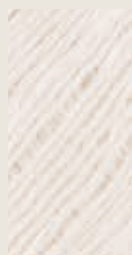
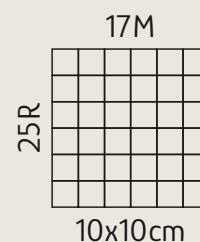
Lauflänge · running length: ca. 120m / 50g
10x50g in 500g Polybeutel · polybag



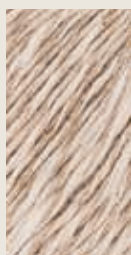
38M = 450g



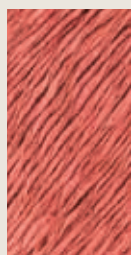
3,5 – 4,5



01 weiß



02 sand



04 koralle



05 cyclam



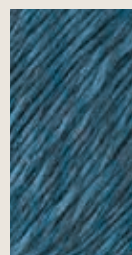
03 honig



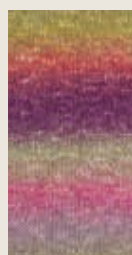
08 salbei



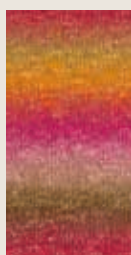
07 türkis



06 indigo



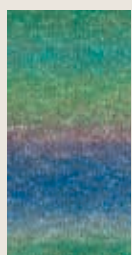
101 anemone



102 tropic



103 atoll



104 lagune



Cornwall Linen 150342-..

Art.-Nr. · quality-no.: 90342

Kategorie · category: Wollmischungen · wool blends

Material · blend:

85% Schurwolle (Superfine) · virgin wool, **15% Leinen** · flax



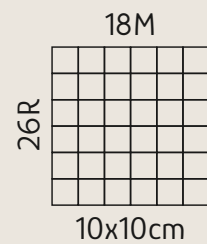
Lauflänge · running length: ca. 100m / 50g
10x50g in 500g Polybeutel · polybag



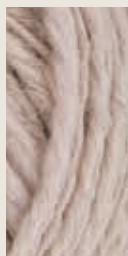
38M = 550g



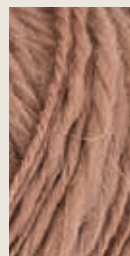
4,5 – 5,5



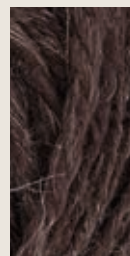
01 natur



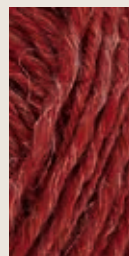
03 sand



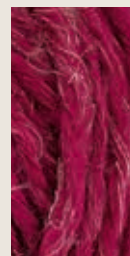
05 camel



06 kaffee



10 granat



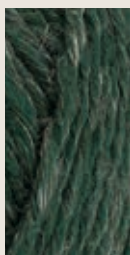
11 beere



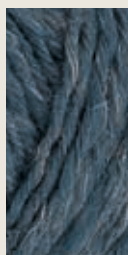
09 gold



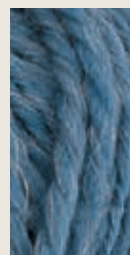
07 schilf



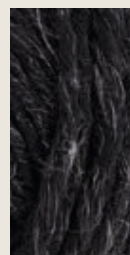
08 tanne



04 blau



12 jeans



02 anthrazit



Denim Melange 158305-..

Art.-Nr. · quality-no.: 90305

Kategorie · category: Baumwollmischungen · cotton blends

Material · blend:

65% Baumwolle · cotton, **35% Viskose (Lyocell)** · viscose



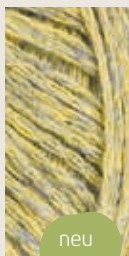
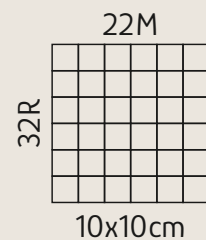
Lauflänge · running length: ca. 160m / 50g
10x50g in 500g Polybeutel · polybag



38M = 500g



3 – 4



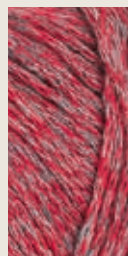
09
curry

neu
new

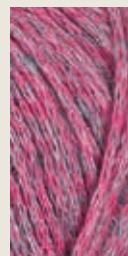


10
orange

neu
new



01
rot



02
pink



03
blau



04
eis



05
aqua



06
lagune



07
khaki



08
sahara



Eco Cashmere 150311-..

Art.-Nr. · quality-no.: 90311
 Kategorie · category: Cashmere

Material · blend:
100% Kaschmir · cashmere



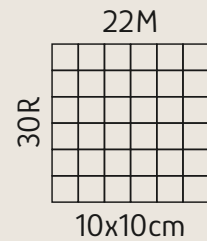
Lauflänge · running length: ca. 112m / 25g
 10x25g in 250g Karton · cardboard box



38M = 250g



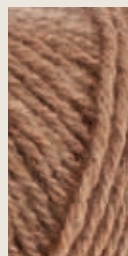
3 – 4



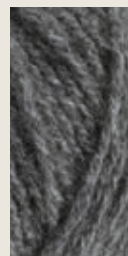
01 natur



05 beigemelange



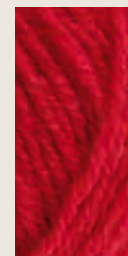
06 camel



07 graumelange



09 lavendel



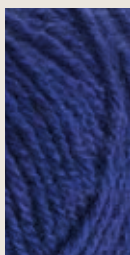
03 rot



08 gold



10 grün



04 blau



02 schwarz



Eila 150314-..

Art.-Nr. · quality-no.: 90314

Kategorie · category: Baumwollmischungen · cotton blends

Material · blend: **49% Viskose (Lyocell Tencel TM)** · viscose,
30% Baumwolle · cotton, **21% Leinen** · flax



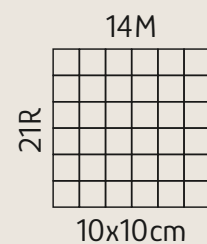
Lauflänge · running length: ca. 95m / 50g
10x50g in 500g Polybeutel · polybag



38M = 450g



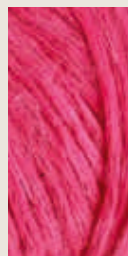
5 – 6



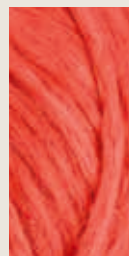
01
weiß



02
puder



05
pink



04
koralle



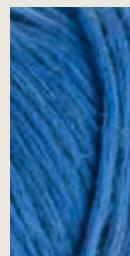
03
gold



08
grün



07
türkis



06
royal



Flake Dance 158332-..

Art.-Nr. · quality-no.: 90332

Kategorie · category: Baumwollmischungen · cotton blends

Material · blend: **66% Baumwolle** · cotton, **21% Polyacryl** · acrylic, **5% Wolle** · wool, **5% Polyamid** · nylon, **3% Alpaka** · alpaca



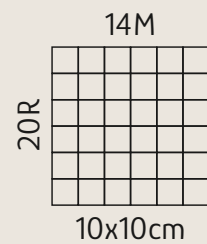
Lauflänge · running length: ca. 100m / 50g
10x50g in 500g Polybeutel · polybag



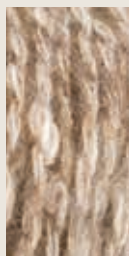
38M = 500g



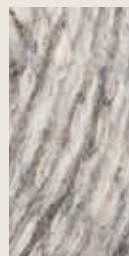
5 – 6



01 natur



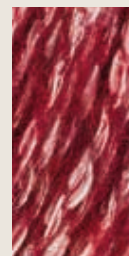
03 taupe



04 silber



02 rosé



10 rubin



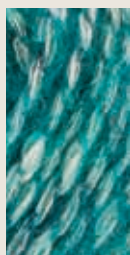
09 rot



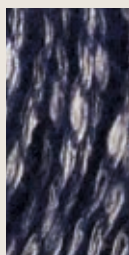
08 kürbis



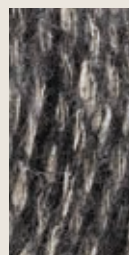
07 honig



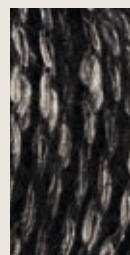
12 lagune



11 tinte



05 rauch



06 schwarz



Kid Silk 150233-..

Art.-Nr. · quality-no.: 98233
 Kategorie · category: Mohair

Material · blend:
75% Mohair · mohair, **25% Seide** · silk



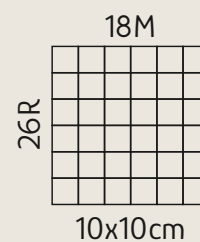
Lauflänge · running length: ca. 225m / 25g
 10x25g in 250g Karton · cardboard box



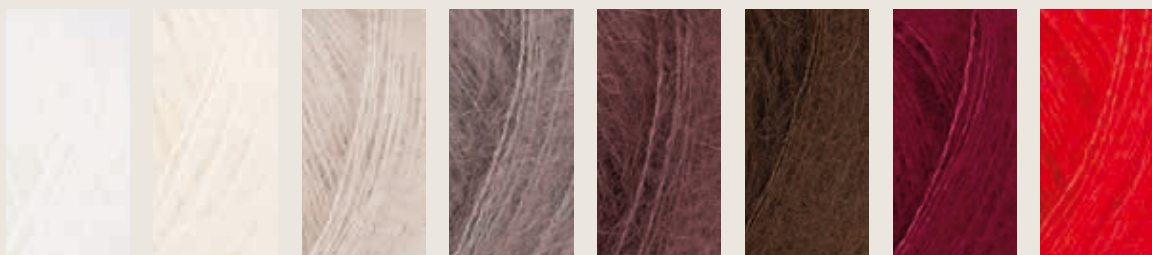
38M = 125g



3 - 4



A



01 weiss 10 natur 23 hanf 15 taupe 32 maroni 50 cognac 39 wein 31 mohn

B



42 melone 25 kürbis 38 apricot 35 rosé 30 pink lipstick 43 cyclam 06 fuchsie 17 brombeer

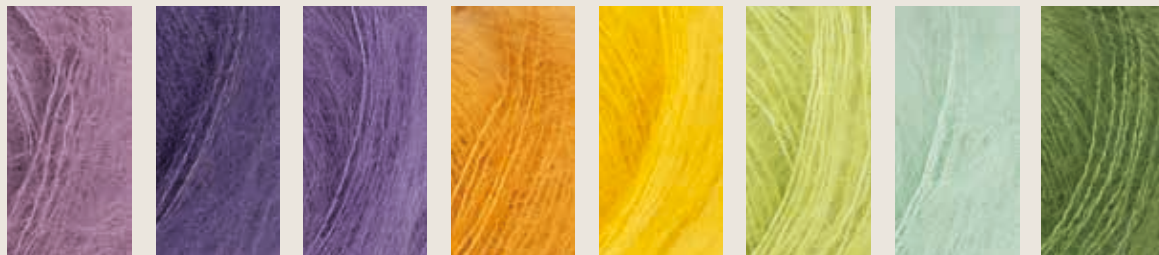
39 Farben · colors

- 01 A/01
- 02 E/07
- 04 E/04
- 06 B/07
- 07 E/06
- 09 D/07
- 10 A/02
- 15 A/04
- 17 B/08
- 18 E/05
- 21 E/03
- 22 C/06
- 23 A/03
- 24 C/01
- 25 B/02
- 26 C/04
- 27 D/04
- 28 C/08
- 29 D/03
- 30 B/05
- 31 A/08
- 32 A/05
- 33 D/05
- 34 E/02
- 35 B/04
- 36 C/02
- 37 D/08
- 38 B/03

150233-..

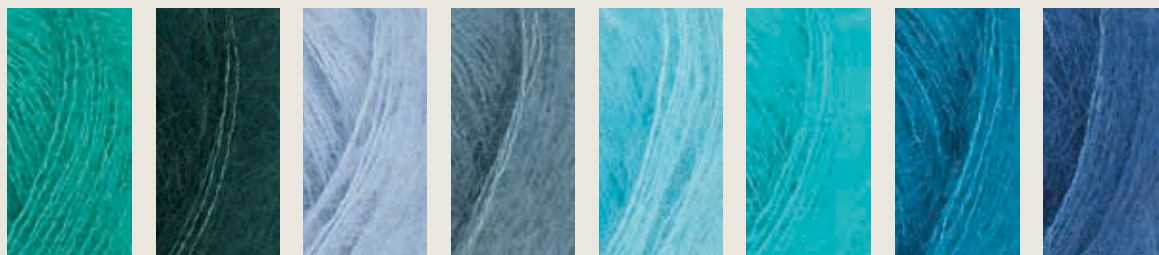
- 39 A/07
- 40 D/01
- 41 C/05
- 42 B/01
- 43 B/06
- 45 E/01
- 46 D/06
- 47 C/03
- 48 C/07
- 49 D/02
- 50 A/06

C



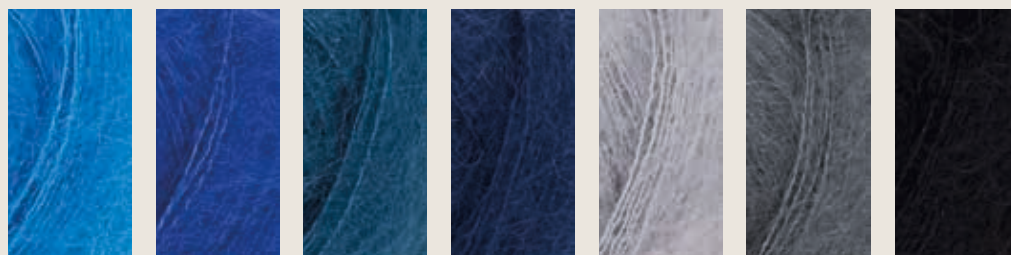
- 24 mauve
- 36 pflaume
- 47 fieder
- 26 curry
- 41 gelb
- 22 birke
- 48 mint
- 28 absinth

D



- 40 smaragd
- 49 dunkelgrün
- 29 rauchblau
- 27 topas
- 33 pool
- 46 türkis
- 09 lagune
- 37 taubenblau

E



- 45 blau
- 34 royal
- 21 dunkelpetrol
- 04 marine
- 18 silber
- 07 grau
- 02 schwarz



Kid Silk Degradé 150309-..

Art.-Nr. · quality-no.: 98309

Kategorie · category: Mohair

Material · blend:

70% Mohair Super Kid · mohair, **30% Seide** · silk



Lauflänge · running length: ca. 425m / 50g

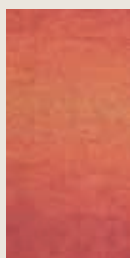
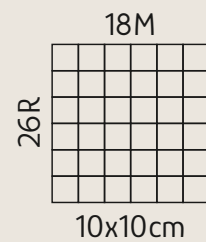
5x50g in 250g Karton · cardboard box



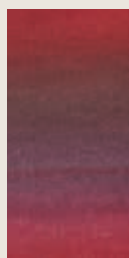
38M = 100g



3 – 4



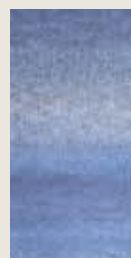
101
feuert



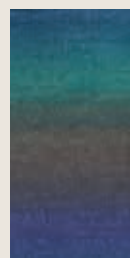
107
himbeere



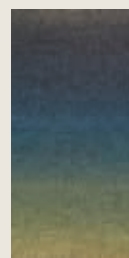
102
pink



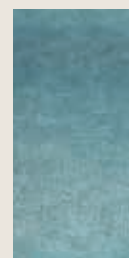
103
blau



108
lagune



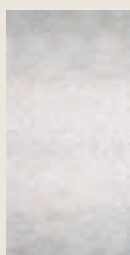
109
laub



104
petrol



105
jade



106
silber



Magic Silk 140306-..

Art.-Nr. · quality-no.: 98206
 Kategorie · category: Seide · silk

Material · blend:
100% Seide · silk



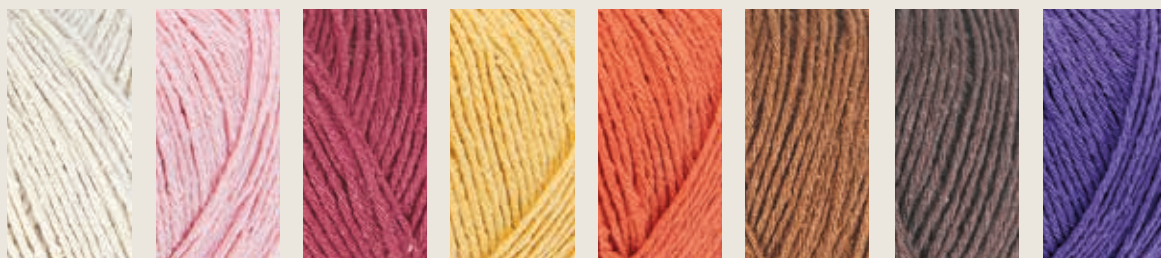
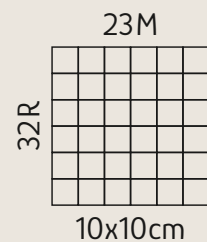
Laufänge · running length: ca. 200m / 50g
 10x50g in 500g Karton · cardboard box



38M = 350g



3,5 – 4



01 natur

10 rosé

03 kirsche

12 sonne

11 gerbera

02 mandel

04 kakao

15 lavendel



05 khaki

06 loorbeer

07 petrol

08 fjord

13 aqua

14 blau

09 marine



Magic Silk Color 140307-..

Art.-Nr. · quality-no.: 98207
 Kategorie · category: Seide · silk

Material · blend:
100% Seide · silk



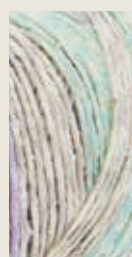
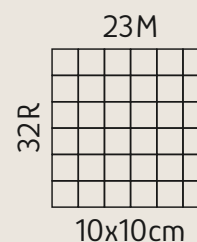
Lauflänge · running length: ca. 200m / 50g
 10x50g in 500g Karton · cardboard box



38M = 350g



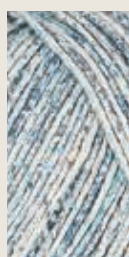
3,5 – 4



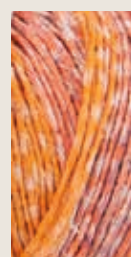
112
opal



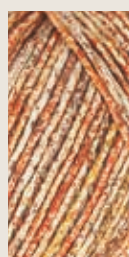
115
türkis



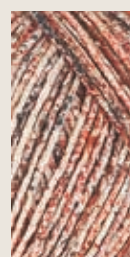
108
wasser



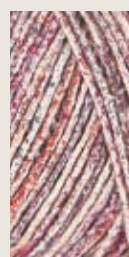
110
karneol



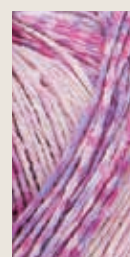
102
gold



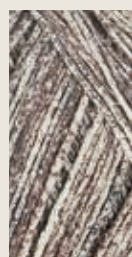
101
zimt



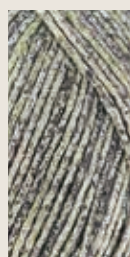
103
beere



111
rubin



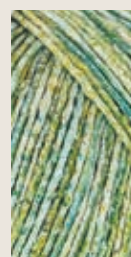
104
taupe



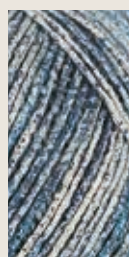
105
kiesel



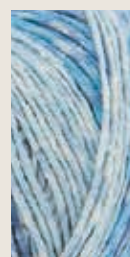
106
salbei



107
birke



109
jeans



113
saphir



114
smaragd



Maila Multicolor 158309-..

Art.-Nr. · quality-no.: 90309

Kategorie · category: Wollmischungen · wool blends

Material · blend:

65% Schurwolle · virgin wool, **35% Polyacryl** · acrylic



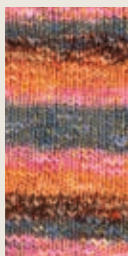
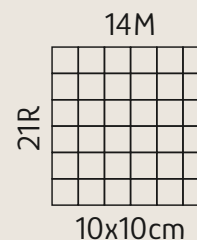
Lauflänge · running length: ca. 90m / 50g
10x50g in 500g Polybeutel · polybag



38M = 550g



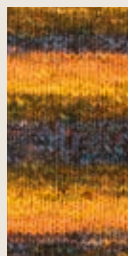
5 – 6



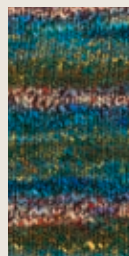
01
rosenholz



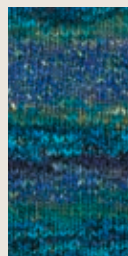
02
vulkan



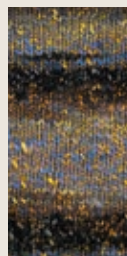
03
kurkuma



04
dschungel



05
lagune



06
galaxie



Merino 160 150610-..

Art.-Nr. · quality-no.: 97610
 Kategorie · category: Schurwolle · virgin wool

Material · blend:
100% Schurwolle (Superfine) · virgin wool



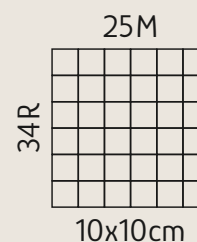
Lauflänge · running length: ca. 160m / 50g
 10x50g in 500g Karton · cardboard box



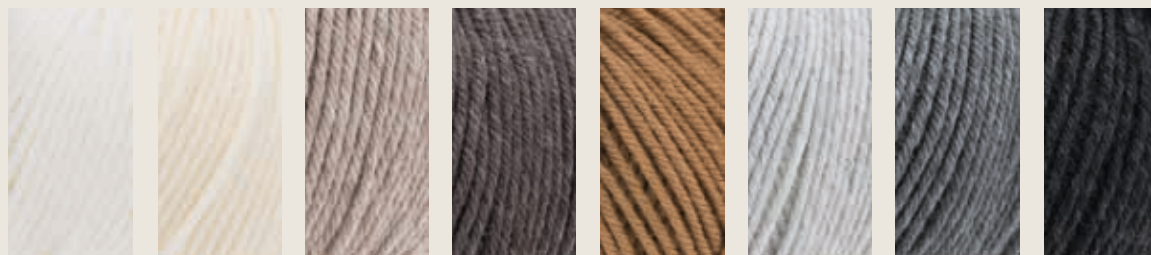
38M = 500g



3 – 4

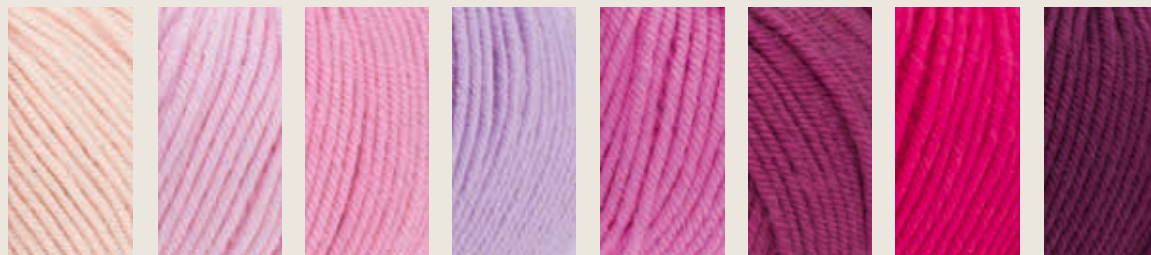


A



201 weiß 210 natur 237 beige-meliert 238 braun-meliert 269 camel 228 hellgrau 229 grau 234 anthrazit

B



266 puder 211 rosa 261 azalée 272 flieder 256 lollipop 241 pink lipstick 219 fuchsia 220 brombeer

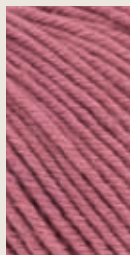
44 Farben · colors

- 201 A/01
- 202 F/04
- 203 C/04
- 204 F/02
- 207 D/01
- 208 D/04
- 210 A/02
- 211 B/02
- 213 D/02
- 219 B/07
- 220 B/08
- 221 D/08
- 222 E/06
- 223 E/05
- 228 A/06
- 229 A/07
- 230 C/03
- 232 E/08
- 233 E/04
- 234 A/08
- 235 E/03
- 237 A/03
- 238 A/04
- 240 D/05
- 241 B/06
- 255 C/02
- 256 B/05
- 257 C/06

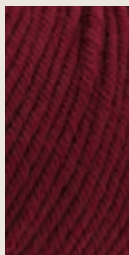
150610-..

C

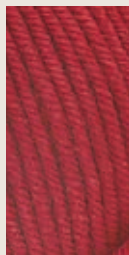
258 D/03
259 E/01
260 E/07
261 B/03
262 E/02
263 F/03
264 F/01
265 C/08
266 B/01
267 C/05
268 C/07
269 A/05
270 D/06
271 C/01
272 B/04
273 D/07



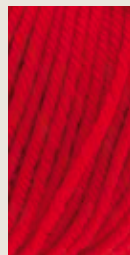
271
altrosa



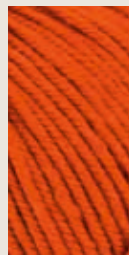
255
wein



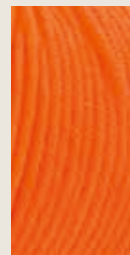
230
rubin



203
rot



267
terra-
cotta



257
orange



268
gold



265
safran

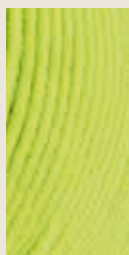
D



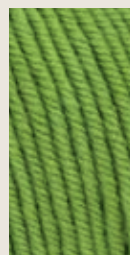
207
gelb



213
küken



258
hellgrün



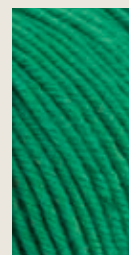
208
apfelgrün



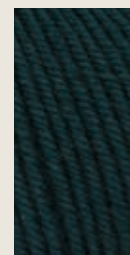
240
absinth



270
oliv



273
gras

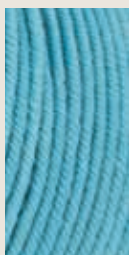


221
tanne

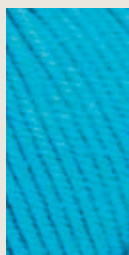
E



259
mint



262
curaçao



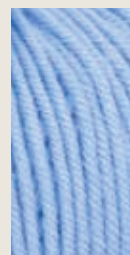
235
türkis



233
petrol



223
jeans



222
azur



260
blau



232
royal

F



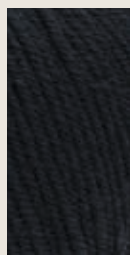
264
electric
blue



204
marine



263
topas



202
schwarz



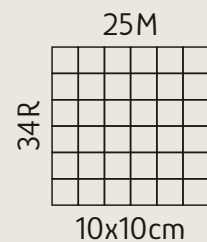
Merino 160 Color 150611-..

Art.-Nr. · quality-no.: 97611
 Kategorie · category: Schurwolle · virgin wool

Material · blend:
100% Schurwolle (Superfine) · virgin wool



Lauflänge · running length: ca. 160m / 50g
 10x50g in 500g Karton · cardboard box



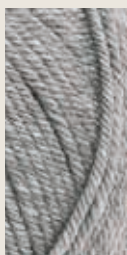
38M = 500g



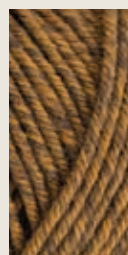
3 - 4



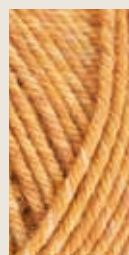
1210 leinen



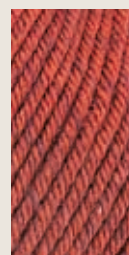
1211 taupe



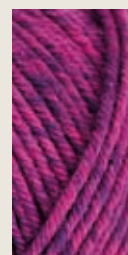
1217 borke



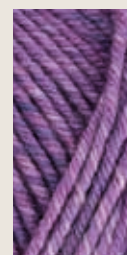
1216 honig



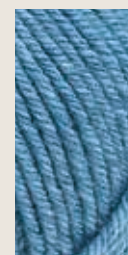
1213 granat



1220 purpur



1219 flieder



1214 denim



1215 see



1218 lagune



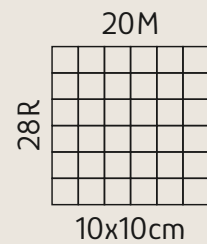
Merino 105 150612-..

Art.-Nr. · quality-no.: 97612
 Kategorie · category: Schurwolle · virgin wool

Material · blend:
100% Schurwolle (Superfine) · virgin wool



Lauflänge · running length: ca. 105m / 50g
 10x50g in 500g Karton · cardboard box



38M = 600g

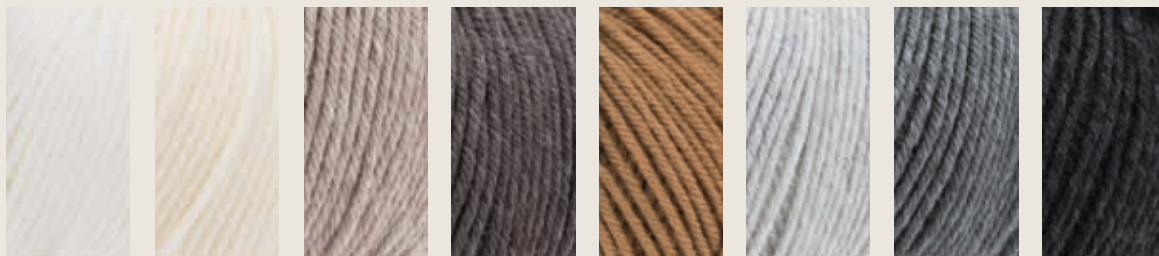


4 – 5

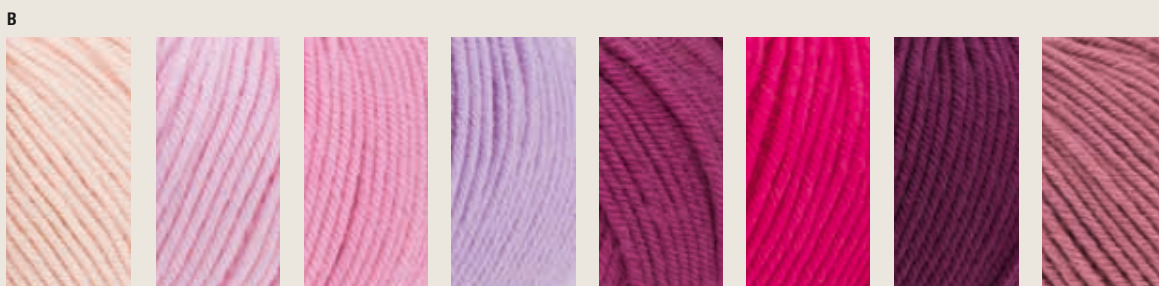


41 Farben - colors

- 301 A/01
- 302 F/01
- 304 E/07
- 303 C/03
- 310 A/02
- 311 B/02
- 313 C/07
- 319 B/06
- 320 B/07
- 322 E/03
- 323 E/02
- 325 C/01
- 328 A/06
- 329 A/07
- 330 C/02
- 332 E/05
- 333 E/01
- 334 A/08
- 337 A/03
- 338 A/04
- 339 D/02
- 341 B/05
- 355 D/01
- 356 D/05
- 357 D/07
- 358 B/03
- 359 D/08
- 360 E/06



301 weiß	310 natur	337 beige- meliert	338 braun- meliert	369 camel	328 hellgrau	329 grau	334 anthrazit- meliert
-------------	--------------	--------------------------	--------------------------	--------------	-----------------	-------------	------------------------------

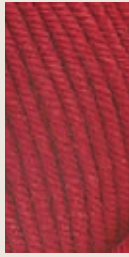


366 puder	311 rosa	358 azalée	372 flieder	341 pink lipstick	319 fuchsia	320 brombeer	371 altrosa
--------------	-------------	---------------	----------------	-------------------------	----------------	-----------------	----------------

C



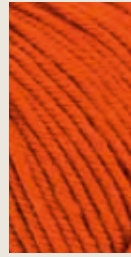
325
bordeaux



330
rubin



303
rot



367
terra-
cotta



368
gold



365
safran



313
küken



362
hellgrün

361 E/08
362 C/08
363 D/06
364 E/04
365 C/06
366 B/01
367 C/04
368 C/05
369 A/05
370 D/03
371 B/08
372 B/04
373 D/04

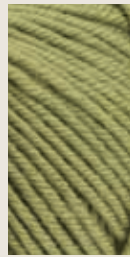
D



355
erbse



339
absinth



370
oliv



373
gras



356
lorbeer



363
mint

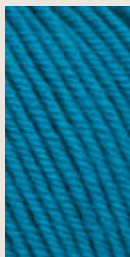


357
curaçao



359
türkis

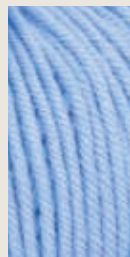
E



333
petrol



323
jeans



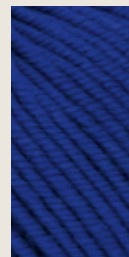
322
azur



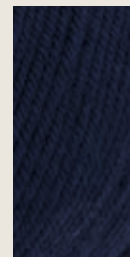
364
blau



332
royal



360
electric
blue

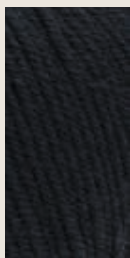


304
marine



361
topas

F




302
schwarz




Merino 85 150614-..

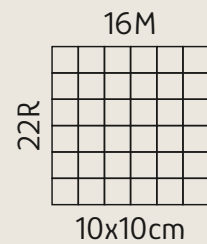
Art.-Nr. · quality-no.: 97614
 Kategorie · category: Schurwolle · virgin wool

Material · blend:
100% Schurwolle (Superfine) · virgin wool

 Lauflänge · running length: ca. 85m / 50g
 10x50g in 500g Karton · cardboard box

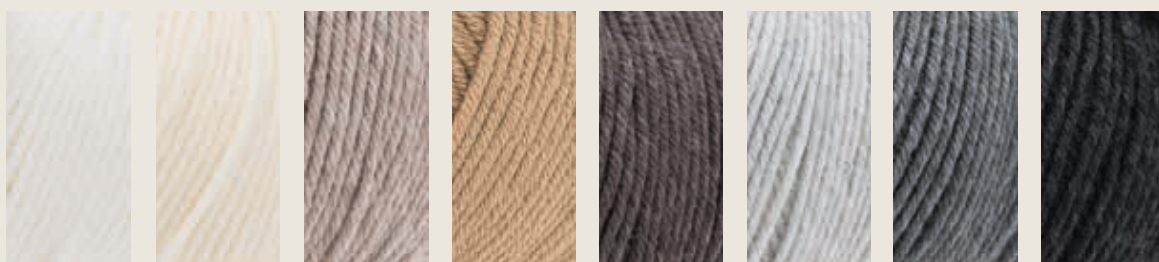
 38M = 700g

 6 – 7

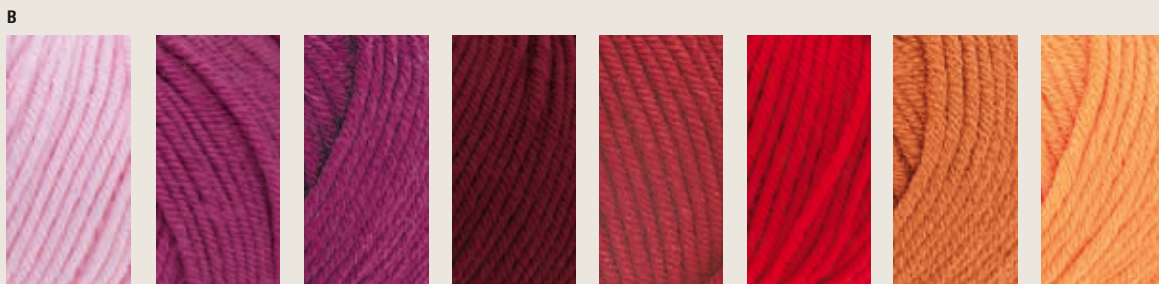


31 Farben - colors

- 01 A/01
- 02 D/07
- 03 A/02
- 05 A/04
- 08 B/06
- 10 B/01
- 11 D/06
- 16 D/05
- 21 C/04
- 27 B/03
- 35 D/03
- 40 D/04
- 42 B/07
- 45 C/03
- 49 B/02
- 54 C/01
- 55 C/02
- 56 C/05
- 59 C/08
- 60 A/07
- 61 B/04
- 62 B/08
- 63 A/06
- 64 A/08
- 65 A/05
- 66 A/03
- 67 B/05
- 68 D/01
- 69 D/02
- 70 C/07
- 71 C/06



01 weiß 03 natur 66 beige-meliert 05 hanf 65 braun-meliert 63 hellgrau-meliert 60 grau-meliert 64 anthrazit-meliert



10 rose 49 pink lipstick 27 aubergine 61 wein 67 rubin 08 rot 42 kürbis 62 jelly bean

150614-..

c



54
sonne

55
erbse

45
absinth

21
oliv

56
lorbeer

71
mint

70
türkis

59
petrol

d



68
jeans

69
azur

35
royal

40
dunkelpetrol

16
marine

11
lila

02
schwarz



Austermann
Merino 85





Pailletten Beilaufgarn 150301-..

Art.-Nr. · quality-no.: 98201

Kategorie · category: Spezialgarne · special yarns

Material · blend:

100% Polyester · polyester



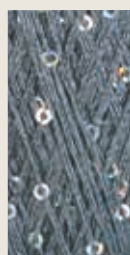
Lauflänge · running length: ca. 185m / 25g
10x25g in 250g Polybeutel · polybag



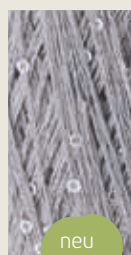
01
platin



03
gold



02
anthrazit



04
silber

neu
new

neu
new



Playa Organic Cotton 150307-..

Art.-Nr. · quality-no.: 90307

Kategorie · category: Baumwollmischungen · cotton blends

Material · blend:

88% Baumwolle (Organic Cotton) · cotton, **12% Polyamid** · nylon



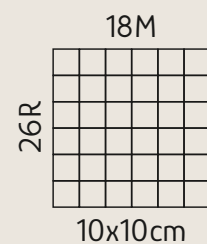
Lauflänge · running length: ca. 120m / 50g
10x50g in 500g Polybeutel · polybag



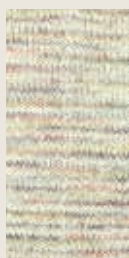
38M = 550g



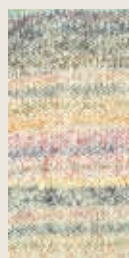
4 – 5



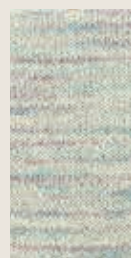
01
sorbet



02
muschel



03
riviera



04
wolke



05
karibik



06
seegras



07
anemone



Provence Color 150304-..

Art.-Nr. · quality-no.: 90304

Kategorie · category: Baumwollmischungen · cotton blends

Material · blend:

72% Baumwolle · cotton, **14% Alpaka** · alpaca · **14% Wolle** · wool



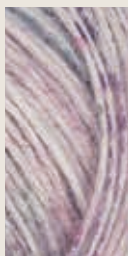
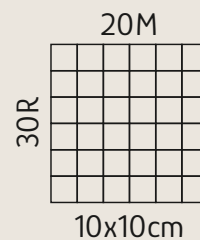
Lauflänge · running length: ca. 137m / 25g
10x25g in 250g Polybeutel · polybag



38M = 250g



3 – 4



01 malve



02 primel



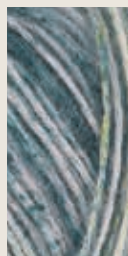
03 schilf*



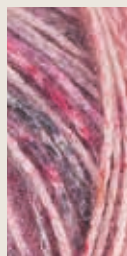
04 eukalyptus



05 türkis



06 meer



07 beere



Runa 150352-..

Art.-Nr. · quality-no.: 90352

Kategorie · category: Wollmischungen · wool blends

Material · blend: **32% Wolle** · wool, **32% Polyacryl** · acrylic,
20% Polyamid · nylon, **16% Alpaka** · alpaca



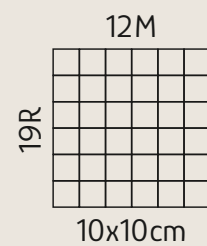
Lauflänge · running length: ca. 375m / 150g
4x150g in 600g Polybeutel · polybag



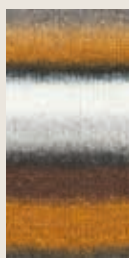
38M = 300g



6 – 7



01
marmor



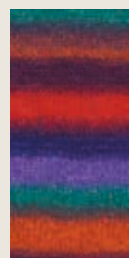
02
achat



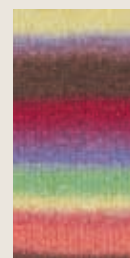
03
herbst*



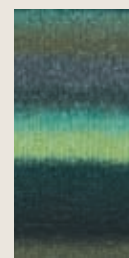
04
dahlie*



05
kolibri



06
opal



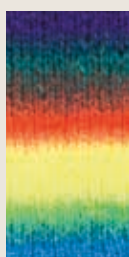
07
wald



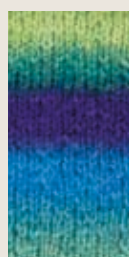
08
ocean



09
viola



10
neon



11
pfau



Silk Cotton 158301-..

Art.-Nr. · quality-no.: 90301

Kategorie · category: Baumwollmischungen · cotton blends

Material · blend:

70% Baumwolle · cotton, **30% Seide** · silk



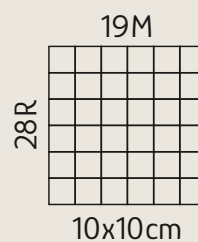
Lauflänge · running length: ca. 130m / 50g
10x50g in 500g Polybeutel · polybag



38M = 550g



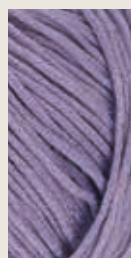
3,5 – 4,5



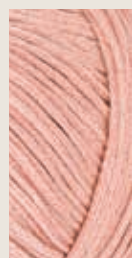
01 natur



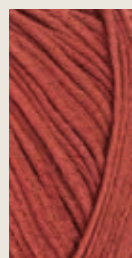
05 leinen



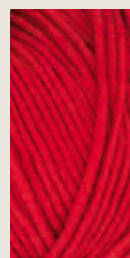
12 flieder



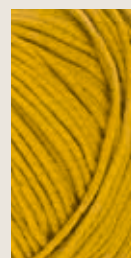
07 lachs



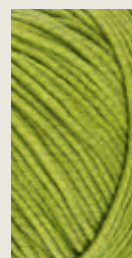
08 zimt



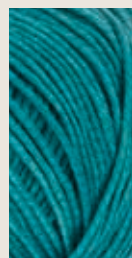
03 rot



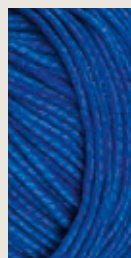
06 gold



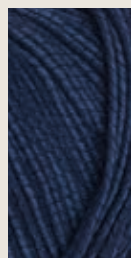
09 laub



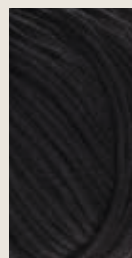
10 petrol



11 blau



04 marine



02 schwarz



Svea Alpaca & Cotton 150316-..

Art.-Nr. · quality-no.: 90316

Kategorie · category: Alpaca

Material · blend: **50% Baumwolle** · cotton,
35% Alpaka (Baby) · alpaca, **15% Polyamid** · nylon



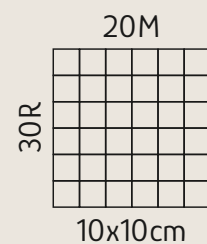
Lauflänge · running length: ca. 200m / 50g
10x50g in 500g Polybeutel · polybag



38M = 350g



3,5 – 4,5



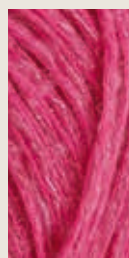
01
weiß



02
beige



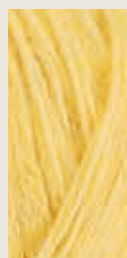
06
flieder



05
pink



04
orange



03
primel



08
jade



07
himmel



Woolly Shine 150351-..

Art.-Nr. · quality-no.: 90351

Kategorie · category: Wollmischungen · wool blends

Material · blend:

70% Wolle · wool, **29% Polyacryl** · acrylic, **1% Elastan** · elastane



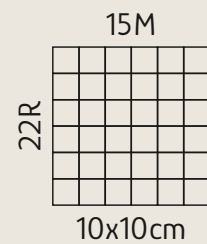
Lauflänge · running length: ca. 125m / 50g
10x50g in 500g Polybeutel · polybag



38M = 450g



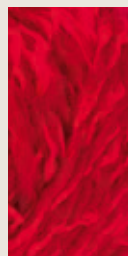
5 – 6



01
beige



04
orange



05
rubin



09
orchidee



03
gold



06
smaragd



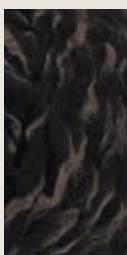
07
petrol



08
royal



02
cognac



10
schwarz



Step 4-fach Color 150689-..

Art.-Nr. · quality-no.: 97689

Kategorie · category: Strumpfgarne · sock yarns

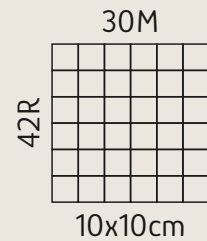
Material · blend:

75% Schurwolle (Superwash) · virgin wool, **25% Polyamid** · nylon



Lauflänge · running length: ca. 420m / 100g

5x100g in 500g Polybeutel · polybag / 6-kg-Einheitskarton · unit box



38M = 100g



38M = 450g



2,5 – 3



A



340 trondheim

341 bergen

342 stavanger

343 narvik

43 taiga

358 grau

359 türkis

360 azur

B



287 blau

274 jeans

16 jeans

89 pazifik maskulin

88 natilus maskulin

87 schiefer maskulin

86 heide maskulin

46 nordcap

30 Farben · colors

- 16 B/03
- 18 C/07
- 43 A/05
- 46 B/08
- 86 B/07
- 87 B/06
- 88 B/05
- 89 B/04
- 132 C/02
- 133 C/03
- 134 C/04
- 136 C/01
- 219 D/01
- 256 C/08
- 259 D/02
- 265 D/05
- 274 B/02
- 278 B/01
- 288 C/06
- 295 D/06
- 297 D/03
- 299 D/04
- 340 A/01
- 341 A/02
- 342 A/03
- 343 A/04
- 358 A/06
- 359 A/07
- 360 A/08
- 361 C/05

150689-..

c



136
rauch
easy



132
violett
easy



133
purple
easy



134
burgund
easy



361
pink



288
rot



18
vulkan



256
rot-pflaume

d



219
ennis



259
sonne-pink



297
shannon



299
tullamore



265
oliv bunt



295
drogheda



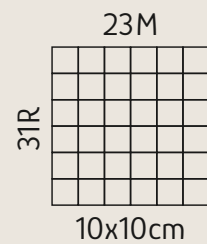
Step 6-fach Color 150825-..

Art.-Nr. · quality-no.: 97825
 Kategorie · category: Strumpfgarne · sock yarns

Material · blend:
75% Schurwolle (Superwash) · virgin wool, **25% Polyamid** · nylon



Lauflänge · running length: ca. 410m / 150g
 5x150g in 750g Polybeutel · polybag / 9-kg-Einheitskarton · unit box



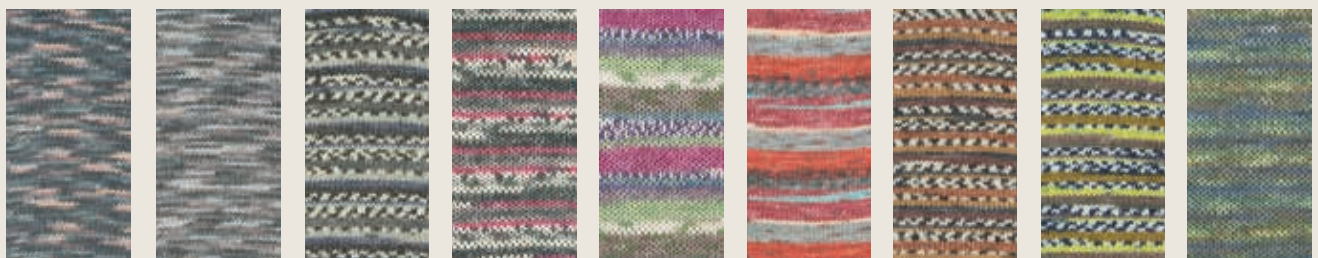
38M = 150g



38M = 600g



3 - 4



736 mokka

735 granit

786 asche

612 lava

605 waldbeere

720 burgund

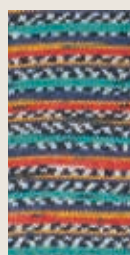
787 borke

788 oliv

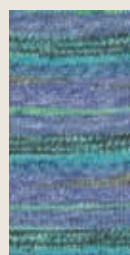
614 krokodil



789 electric blue



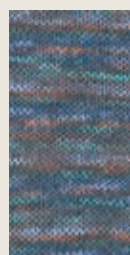
790 clown



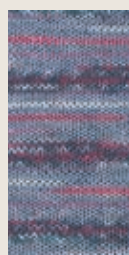
717 lagune



739 petrol



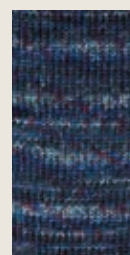
613 pfau



620 iris



738 navy



634 sturm



DAS ORIGINAL
MIT ALOE VERA
UND JOJOBA-ÖL

Step 6-fach Color

Aufmachung im Kuchenknäuel
Style in yarn cake

150826-..

Art.-Nr. · quality-no.: 97826

Kategorie · category: Strumpfgarne · sock yarns

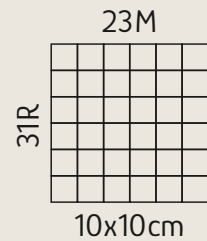
Material · blend:

75% Schurwolle (Superwash) · virgin wool, **25% Polyamid** · nylon



Lauflänge · running length: ca. 410m / 150g

5x150g in 750g Polybeutel · polybag / 7,5-kg-Einheitskarton · unit box



38M = 150g



38M = 600g



3 - 4

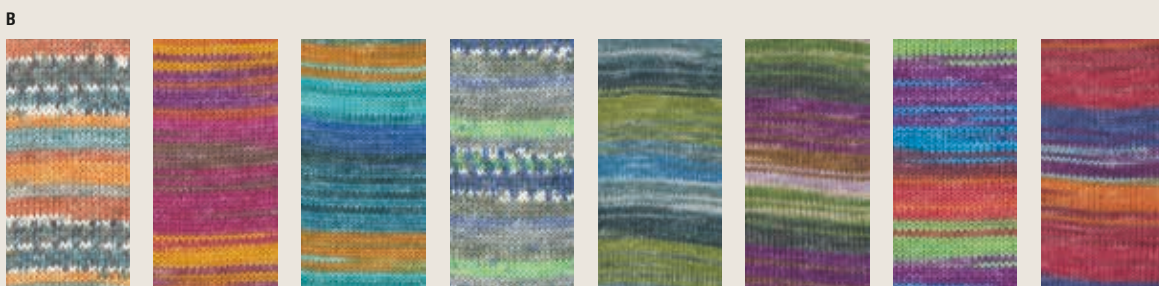


21 Farben · colors

- 623 B/03
- 624 B/07
- 626 B/02
- 627 C/04
- 628 B/05
- 629 A/07
- 630 B/06
- 632 B/08
- 678 C/05
- 679 A/02
- 682 A/08
- 713 B/01
- 715 A/04
- 716 B/04
- 731 A/01
- 732 A/03
- 733 A/05
- 734 A/06
- 741 C/01
- 742 C/02
- 743 C/03



731 burgunder 679 inverness 732 violet 715 zwetschge 733 archat 734 petrolblau 629 malbay 682 loch ness



713 goldfasan 626 fintona 623 malin 716 bergwiese 628 liscannor 630 kilkeel 624 ferbane 632 gorey

150826-..

c



741
blau-bunt

742
grün-bunt

743
türkis-bunt

627
tralee

678
edinburgh

Austermann
Step 6





Step 4-fach Classic Uni 130214-..

Art.-Nr. · quality-no.: 98214

Kategorie · category: Strumpfgarne · sock yarns

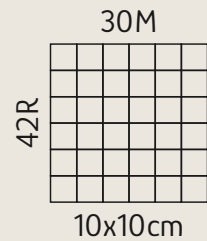
Material · blend:

75% Schurwolle (Superwash) · virgin wool, **25% Polyamid** · nylon



Lauflänge · running length: ca. 420m / 100g

5x100g in 500g Polybeutel · polybag / 10-kg-Einheitskarton · unit box



38M = 100g



38M = 450g



2,5 – 3



28 Farben · colors

- 1000 A/02
- 1001 A/01
- 1003 C/02
- 1004 B/06
- 1005 B/05
- 1007 D/03
- 1009 C/06
- 1010 D/02
- 1012 C/08
- 1013 D/04
- 1014 B/08
- 1015 B/07
- 1016 B/02
- 1017 D/01
- 1018 C/04
- 1019 C/01
- 1020 A/04
- 1021 B/03
- 1022 B/04
- 1023 C/05
- 1024 C/03
- 1025 A/06
- 1026 C/07
- 1027 B/01
- 1035 A/03
- 1036 A/05
- 1037 A/07
- 1038 A/08



1001 weiß	1000 natur	1035 sand- meliert	1020 mokka	1036 mocca- meliert	1025 hellgrau	1037 grau- meliert	1038 anthrazit- meliert
---------------------	----------------------	---------------------------------	----------------------	----------------------------------	-------------------------	---------------------------------	--------------------------------------



1027 rosé	1016 pink	1021 brombeer	1022 flieder	1005 kirsch	1004 rot	1015 orange	1014 gelb
---------------------	---------------------	-------------------------	------------------------	-----------------------	--------------------	-----------------------	---------------------

130214-..

c



1019
grün

1003
moos

1024
gras

1018
türkis

1023
petrol

1009
jeans

1026
hellblau

1012
stein

d



1017
royalblau

1010
nachtblau

1007
lila

1013
schwarz



Austermann
Step 4
Classic



Step 6-fach Classic Uni **150693-..**

Art.-Nr. · quality-no.: 97693

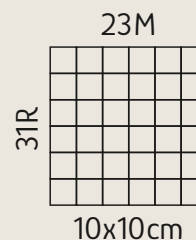
Kategorie · category: Strumpfgarne · sock yarns

Material · blend:

75% Schurwolle (Superwash) · virgin wool, **25% Polyamid** · nylon



Lauflänge · running length: ca. 410m / 150g
5x150g in 750g Polybeutel · polybag



38M = 150g



38M = 600g



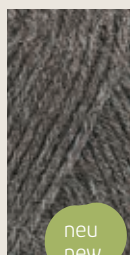
3 – 4



6000 natur



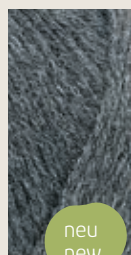
6035 sand-meliert



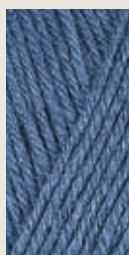
6036 mocca-meliert



6037 grau



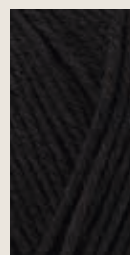
6038 anthrazit-meliert



6009 jeans



6010 nachtblau



6013 schwarz





Auslauffarbe*
Discontinued
color*

Merino Lace 150615-..

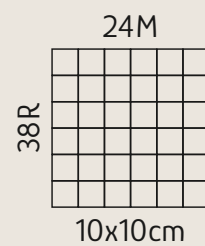
Art.-Nr. · quality-no.: 97615
Kategorie · category: Schurwolle · virgin wool

Material · blend:
100% Schurwolle (Superfine) · virgin wool

 Lauflänge · running length: ca. 400m / 50g
5x50g in 250g Polybeutel · polybag

 38M = 150g

 3 – 4



01
weiß

10
natur

20
bordeaux

08
orange

19
sonne

09
zitrone

17
türkis



Raindrops Degradé

158324-..

Auslauffarbe*
Discontinued
color*

Art.-Nr. · quality-no.: 90324

Kategorie · category: Wollmischungen · wool blends

Material · blend:

75% Wolle · wool, **20% Polyamid** · nylon, **5% Baumwolle** · cotton



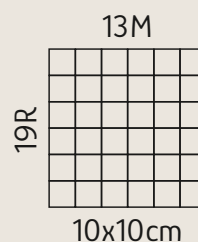
Laufänge · running length: ca. 120m / 50g
10x50g in 500g Polybeutel · polybag



38M = 300g



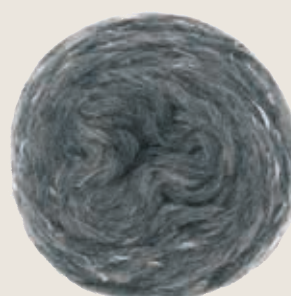
6 - 7



06
gletscher



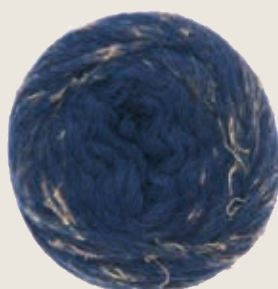
08
taupe



02
grau



04
rot



05
marine

* Nur solange Vorrat reicht · Only while stocks last

Ralph Lauren:

„Wool is not
a fabric. It's
a feeling.“



schoeller+stahl
GANZ SCHÖN KREATIV



neu
new

New Murano 140288-..

Art.-Nr. · quality-no.: 90288

Kategorie · category: Wollmischungen · wool blends

Material · blend:

53% Schurwolle · virgin wool, **47% Polyacryl** · acrylic



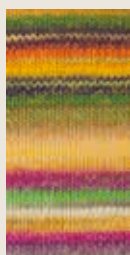
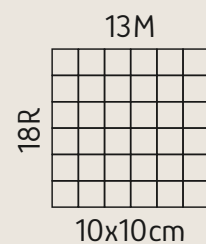
Lauflänge · running length: ca. 180m / 100g
5x100g in 500g Polybeutel · polybag



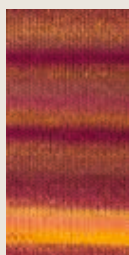
38M = 500g



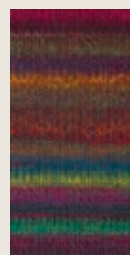
6 – 7



01
sonnenlicht



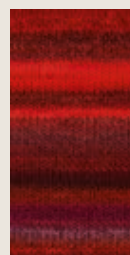
02
herbstlaub



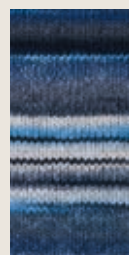
03
kolibri



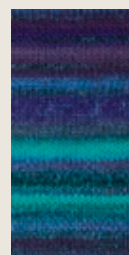
04
aster



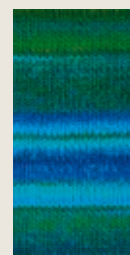
05
rubin



06
meer



07
pfau




08
libelle




Fortissima 4-fach Uni 130031-..

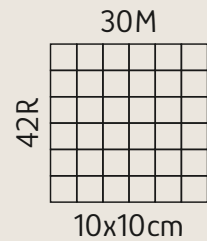
Art.-Nr. · quality-no.: 90038
 Kategorie · category: Strumpfgarne · sock yarns

Material · blend:
75% Schurwolle (Superwash) · virgin wool, **25% Polyamid** · nylon

 Lauflänge · running length: ca. 420m / 100g
 5x100g in 500g Polybeutel · polybag / 12-kg-Einheitskarton · unit box

 38M = 450g

 2,5 – 3



31 Farben - colors

- 2002 D/07
- 2003 C/01
- 2006 C/04
- 2007 C/03
- 2011 B/07
- 2012 B/08
- 2024 A/01
- 2028 B/05
- 2031 D/01
- 2033 C/08
- 2037 D/04
- 2039 D/05
- 2040 D/06
- 2048 A/02
- 2055 B/01
- 2056 B/02
- 2057 B/03
- 2058 B/06
- 2062 B/04
- 2070 A/07
- 2071 A/06
- 2072 A/05
- 2073 A/03
- 2074 A/04
- 2091 C/06
- 2092 C/05
- 2097 A/08
- 2098 C/02
- 2099 D/03
- 2100 D/02
- 2101 C/07

A							
							
2024 brillant weiß**	2048 natur**	2073 sand- meliert**	2074 holz- meliert**	2072 kamel- meliert**	2071 braun- meliert	2070 mokka- meliert**	2097 espresso
B							
							
2055 grau- meliert**	2056 hellgrau- meliert	2057 mittelgrau- meliert**	2062 stein- Moul.	2028 maus**	2058 flanell- meliert**	2011 rubin**	2012 fuchsie**

130031-..

c



2003
kirsch**

2098
rot

2007
mais

2006
gras**

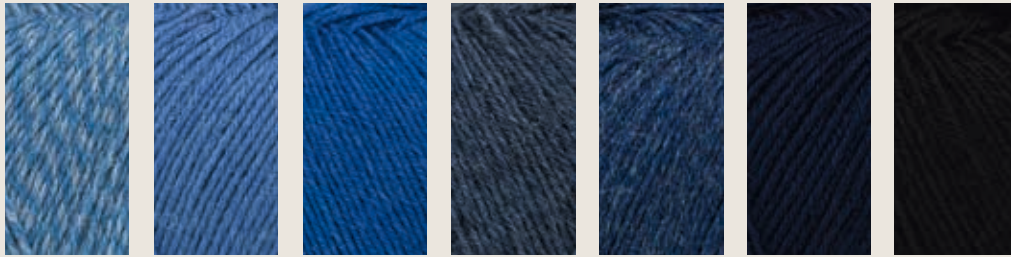
2092
dunkelgrün

2091
jagd**

2101
hellblau

2033
jeans-
meliert**

d



2031
polar
Moul.

2100
taube

2099
blau

2037
polar-
meliert**

2039
marine-
meliert**

2040
nachtblau**

2002
schwarz**

**Beilaufgarn · Reinforcement yarn



Schoeller + Stahl
Fortissima



Fortissima Beilaufgarn 130033-..

Art.-Nr. · quality-no.: 90330

Kategorie · category: Spezialgarne · special yarns

Material · blend:

75% Schurwolle (Superwash) · virgin wool, **25% Polyamid** · nylon



Lauflänge · running length: ca. 40m / 5g Kärtchen · cards
5x5g in 50g Polybeutel · polybag / 5-kg-Einheitskarton · unit box



24 Farben · colors

- 1001 A/02
- 1002 C/08
- 1003 B/08
- 1005 C/04
- 1006 C/02
- 1008 C/01
- 1011 B/05
- 1012 B/06
- 1024 A/01
- 1028 B/03
- 1033 C/05
- 1039 C/06
- 1040 C/07
- 1048 A/03
- 1055 B/01
- 1057 B/02
- 1058 B/04
- 1059 B/05
- 1070 A/07
- 1072 A/06
- 1073 A/04
- 1074 A/05
- 1083 A/08
- 1091 C/03



130033-..

c



1008
mango



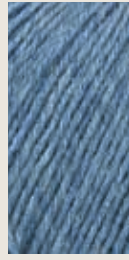
1006
gras



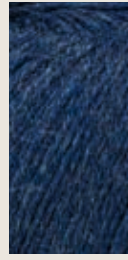
1091
jagd



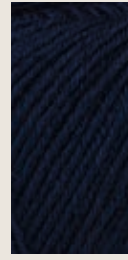
1005
türkis



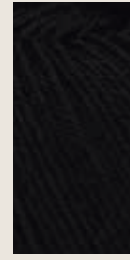
1033
jeans-
meliert



1039
marine-
meliert



1040
nachtblau




1002
schwarz

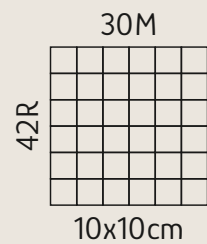



Fortissima Color 4-fach 130028-..

Art.-Nr. · quality-no.: 90028
 Kategorie · category: Strumpfgarne · sock yarns

Material · blend:
75% Schurwolle (Superwash) · virgin wool, **25% Polyamid** · nylon

 Lauflänge · running length: ca. 420m / 100g
 5x100g in 500g Polybeutel · polybag/ 12-kg-Einheitskarton · unit box



 38M = 450g



 2,5 – 3

40 Farben · colors

- 2401 A/01
- 2402 C/04
- 2405 C/05
- 2407 A/04
- 2408 D/07
- 2410 D/06
- 2411 A/02
- 2429 E/05
- 2432 E/06
- 2433 E/07
- 2434 E/08
- 2439 D/03
- 2445 A/05
- 2446 A/03
- 2451 D/05
- 2472 D/04
- 2481 B/01
- 2482 B/02
- 2483 B/03
- 2484 B/04
- 2485 B/05
- 2486 C/06
- 2487 C/07
- 2488 C/08
- 2489 D/01
- 2490 D/02
- 2491 C/01
- 2492 C/02



2401 daisy 2411 natur 2446 taupe 2407 grey 2445 stein 2493 pastell 2494 grau 2495 gras



2481 hollunder 2482 herbstlaub 2483 kiesel 2484 farmer 2485 vulkan 2497 kiwi 2498 mango 2499 pflaume

130028-..

C

2491
country2492
club2496
sport2402
lampion2405
kilt2486
lava2487
regenbogen2488
türkis2493 A/06
2494 A/07
2495 A/08
2496 C/03
2497 B/06
2498 B/07
2499 B/08
2500 D/08
2501 E/01
2502 E/02
2503 E/03
2504 E/04

D

2489
atoll2490
eichelhäher2439
wolke2472
saphir2451
lagune2410
jeans2408
marine2500
rauhref

E

2501
terrazzo2502
borke2503
schiefer2504
mineral2429
kawagoe2432
izu2433
yokohama2434
sapporoSchoeller + Stahl
Fortissima
Color



Fortissima Mexiko 4-fach 150016-..

Art.-Nr. · quality-no.: 90016
 Kategorie · category: Strumpfgarne · sock yarns

Material · blend:
75% Schurwolle (Superwash) · virgin wool, **25% Polyamid** · nylon



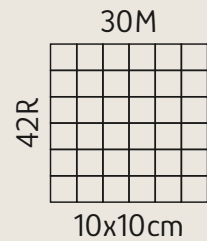
Lauflänge · running length: ca. 420m / 100g
 5x100g in 500g Polybeutel · polybag / 6-kg-Einheitskarton · unit box



38M = 450g



2,5 – 3



9096 bordeaux



9095 fuchsie



9070 sombrero



9072 sundown



9048 yucatan



9097 petrol



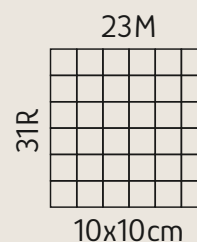
Fortissima Color 6-fach 150008-..

Art.-Nr. · quality-no.: 90008
 Kategorie · category: Strumpfgarne · sock yarns

Material · blend:
75% Schurwolle (Superwash) · virgin wool, **25% Polyamid** · nylon



Lauflänge · running length: ca. 410m / 150g
 5x150g in 750g Polybeutel · polybag



38M = 600g



3 - 4



159 grau-bunt 160 blau-bunt 161 petrol-bunt 162 braun-bunt 163 bordeaux-bunt 164 tiefsee 165 asphalt 166 rodeo



167 dschungel 168 expedition 199 regenbogen 200 libelle 201 iris 202 erika



Fortissima 6-fach TWEED-Effekt **150007-..**

Art.-Nr. · quality-no.: 90007
 Kategorie · category: Strumpfgarne · sock yarns

Material · blend:
75% Schurwolle (Superwash) · virgin wool, **25% Polyamid** · nylon



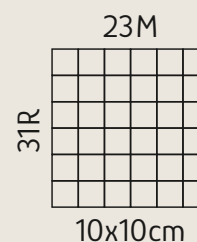
Lauflänge · running length: ca. 410m / 150g
 5x150g in 750g Polybeutel · polybag



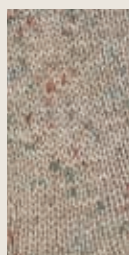
38M = 600g



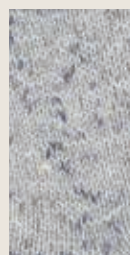
3 – 4



154 natur



155 braun



156 hellgrau



157 dunkelgrau



158 jeans



Fortissima Merino 4-fach **133042-..**

Art.-Nr. · quality-no.: 93042

Kategorie · category: Strumpfgarne · sock yarns

Material · blend:

75% Schurwolle (Merino) · virgin wool, **25% Polyamid** · nylon



Lauflänge · running length: ca. 420m / 100g

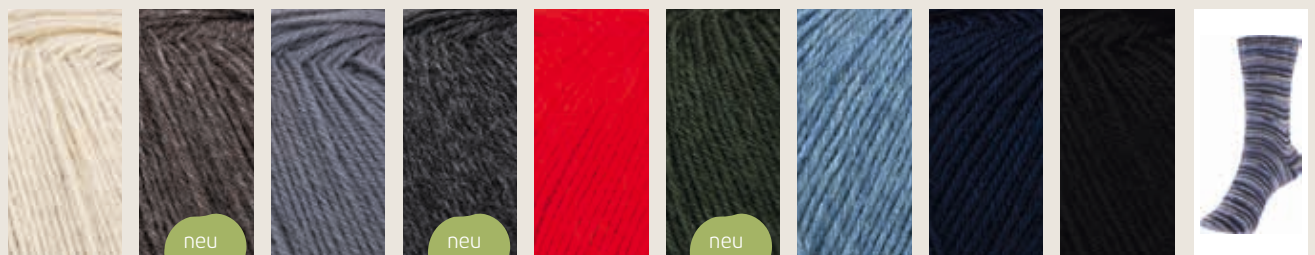
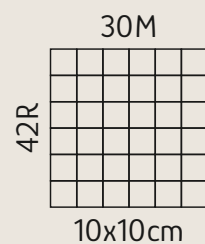
5x100g in 500g Polybeutel · polybag / 6-kg-Einheitskarton · unit box



38M = 450g



2,5 – 3



01 beige

09 mokka

06 grau

08 anthrazit

03 kirsch

07 jagd

05 jeans

04 nachtblau

02 schwarz

107 stein



104 berry

103 glut

111 dahlie

110 achat

102 herbst

106 laub

109 dschungel

105 lagune

101 denim

108 island



Allround 140137-..

Art.-Nr. · quality-no.: 90037

Kategorie · category: Wollmischungen · wool blends

Material · blend:

50% Schurwolle · virgin wool, **50% Polyacryl** · acrylic



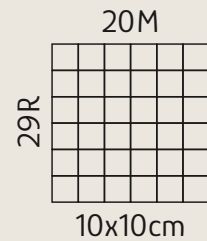
Lauflänge · running length: ca. 125m / 50g
10x50g in 500g Polybeutel · polybag



38M = 500g



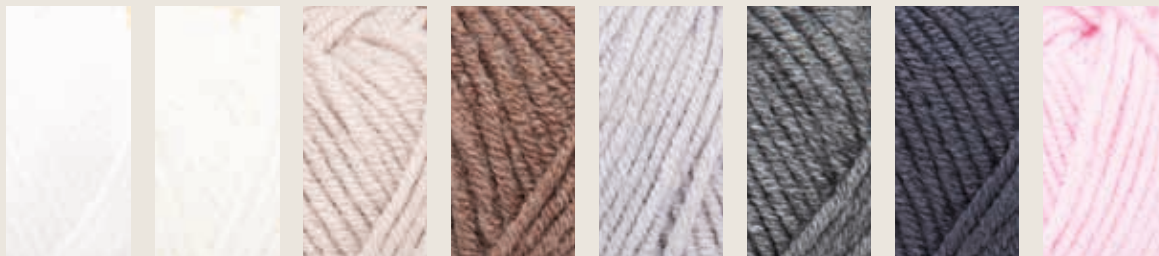
4 – 4,5



21 Farben · colors

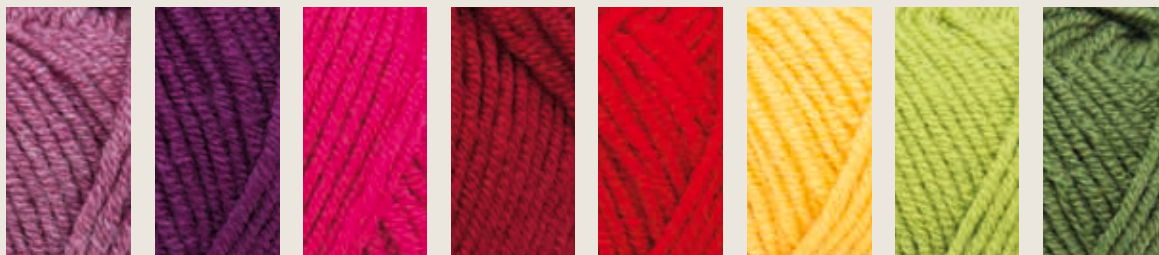
- 01 A/01
- 02 C/05
- 03 B/05
- 04 C/04
- 05 A/03
- 06 A/04
- 07 A/07
- 08 A/06
- 09 A/05
- 10 A/02
- 11 B/06
- 13 B/04
- 14 B/03
- 15 B/02
- 16 B/01
- 17 A/08
- 18 B/07
- 19 B/08
- 21 C/01
- 22 C/02
- 23 C/03

A



- 01 weiß
- 10 natur
- 05 sand
- 06 erde
- 09 silber-meliert
- 08 grau-meliert
- 07 anthrazit
- 17 rosé

B



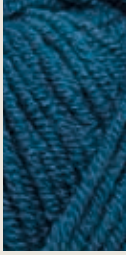
- 16 malve-meliert
- 15 purpur
- 14 cyclam
- 13 weinrot
- 03 rot
- 11 gelb
- 18 apfel
- 19 moos

140137-..

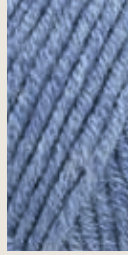
c



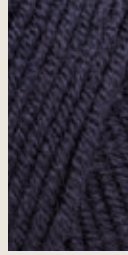
21
lagune



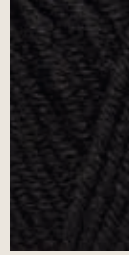
22
petrol



23
jeans-
meliert



04
marine



02
schwarz

Schoeller + Stahl
Allround





Alpha 150088-..

Art.-Nr. · quality-no.: 90088

Kategorie · category: Wollmischungen · wool blends

Material · blend:

70% Polyacryl · acrylic, **30% Schurwolle** · virgin wool



Lauflänge · running length: ca. 60m / 50g

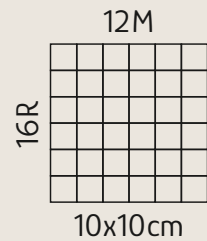
5x50g in 500g Polybeutel · polybag / 10-kg-Einheitskarton · unit box



38M = 600g



7 – 8

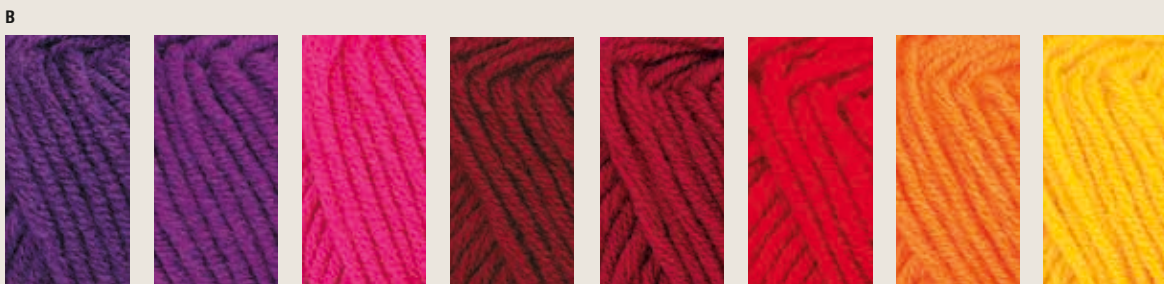


28 Farben · colors

- 01 A/01
- 02 D/04
- 03 B/06
- 04 D/03
- 08 B/01
- 09 C/03
- 10 A/03
- 11 A/07
- 12 A/06
- 15 B/04
- 16 A/05
- 17 D/02
- 19 B/08
- 21 C/02
- 27 B/05
- 29 A/08
- 33 C/08
- 35 A/04
- 36 C/05
- 37 C/04
- 38 C/01
- 39 B/07
- 40 B/03
- 41 C/07
- 42 D/01
- 43 B/02
- 45 C/06
- 46 A/02



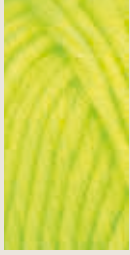
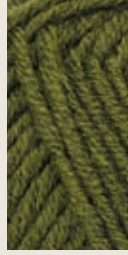
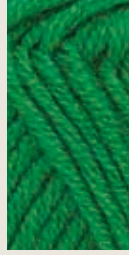
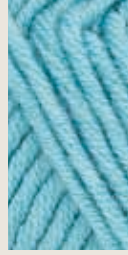
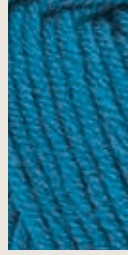
01 weiß 46 wollweiß* 10 natur 35 braun-meliert* 16 kaffee 12 silber-meliert 11 grau-meliert 29 anthrazit-meliert



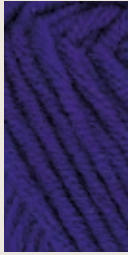
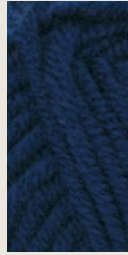
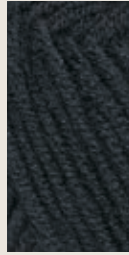
08 aubergine* 43 violett 40 neonpink 15 bordeaux 27 rubin* 03 rot 39 neonorange 19 mais

150088-..

c

38
neongelb21
birke*09
moos*37
neongrün36
gras45
eis*41
aqua33
türkis

d

42
bleu17
royal04
marine02
schwarz

* Nur solange Vorrat reicht · Only while stocks last




Schoeller + Stahl
Alpha

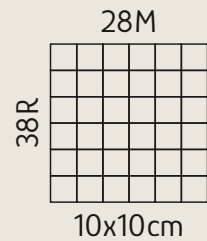


Baby Merino 150138-..


Art.-Nr. · quality-no.: 93429
 Kategorie · category: Schurwolle · virgin wool

Material · blend:
100% Schurwolle (Superwash) · virgin wool

 Lauflänge · running length: ca. 95m / 25g
 20x25g in 500g Karton · cardboard box / 6-kg-Einheitskarton · unit box



  74 = 100g   38M = 400g

 2,5 – 3,5



25 Farben · colors

- 3901 A/01
- 3902 A/02
- 3903 B/07
- 3905 C/01
- 3906 C/03
- 3907 A/07
- 3908 A/08
- 3910 B/06
- 3912 B/03
- 3914 C/06
- 3918 B/04
- 3921 C/07
- 3924 C/09
- 3928 B/05
- 3939 B/08
- 3941 B/02
- 3942 A/06
- 3943 C/05
- 3944 C/08
- 3945 A/03
- 3946 A/05
- 3950 B/01
- 3951 A/04
- 3952 C/04
- 3953 C/02

<p>A</p> 	<p>B</p> 
<p>3901 weiß</p> <p>3902 wollweiß</p> <p>3945 beige</p> <p>3951 braun</p> <p>3946 grau</p> <p>3942 lila*</p> <p>3907 flieder</p> <p>3908 rosé</p>	<p>3950 altrosa</p> <p>3941 nelke</p> <p>3912 cyclam</p> <p>3918 rot</p> <p>3928 mango*</p> <p>3910 mais</p> <p>3903 küken</p> <p>3939 kiwi</p>

150138-..

c

3905
jade3953
lindgrün3906
ozon3952
patina3943
türkis3914
azur3921
nizza3944
marine3924
schwarz*

* Nur solange Vorrat reicht · Only while stocks last



Baby Merino Color 150132-..

Art.-Nr. · quality-no.: 93457

3989
daisy3985
clown3992
rosé color3981
lampion3993
bleu color



VEGAN
1 0 0 %

**OEKO
TEX®**
STANDARD
100



Baby Happy 130279-..

Art.-Nr. · quality-no.: 90279
Kategorie · category: Acryl · acrylic

Material · blend:
100% Polyacryl · acrylic



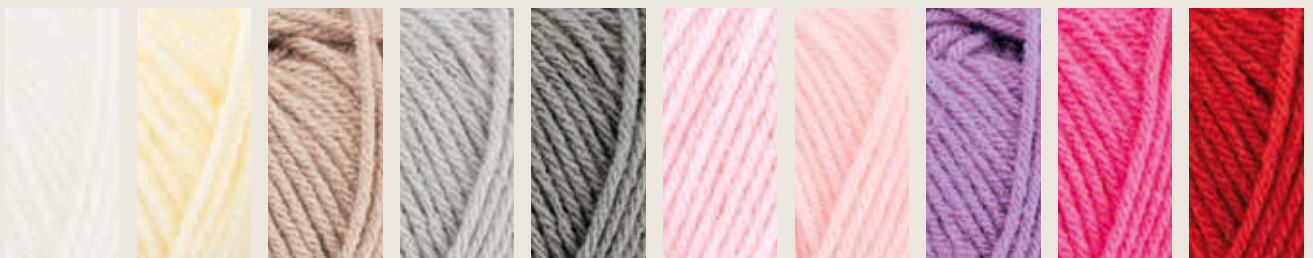
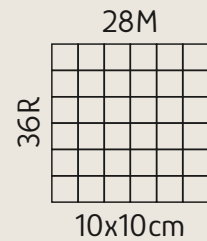
Lauflänge · running length: ca. 185m / 50g
10x50g in 500g Polybeutel · polybag



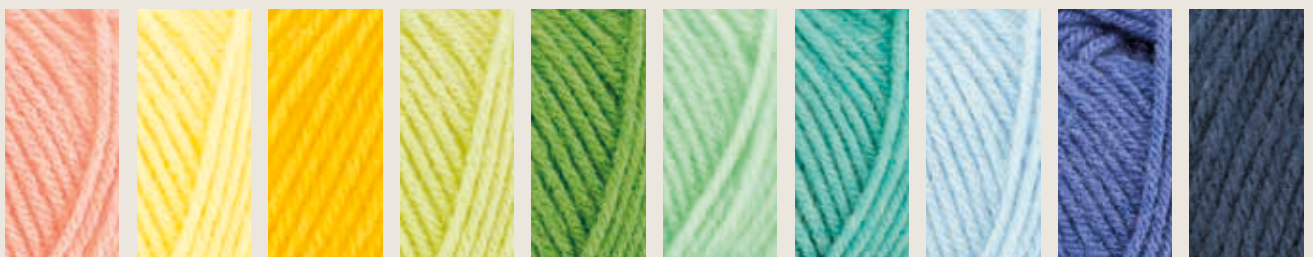
74 = 100g



3 – 3,5



01 weiß 14 creme 12 kamel 07 hellgrau 20 mittelgrau 16 zartrosa 02 rosé 19 flieder 03 pink 04 rot



05 apricot 06 vanille 13 sonne 18 pistazie 11 apfel 15 mint 10 türkis 08 hellblau 09 azur 17 marine



VEGAN
1 0 0 %

OEKO
TEX®
STANDARD
100



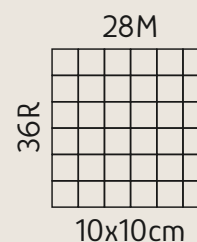
Baby Happy Color 150280-..

Art.-Nr. · quality-no.: 90280
Kategorie · category: Acryl · acrylic

Material · blend:
100% Polyacryl · acrylic



Lauflänge · running length: ca. 185m / 50g
10x50g in 500g Polybeutel · polybag



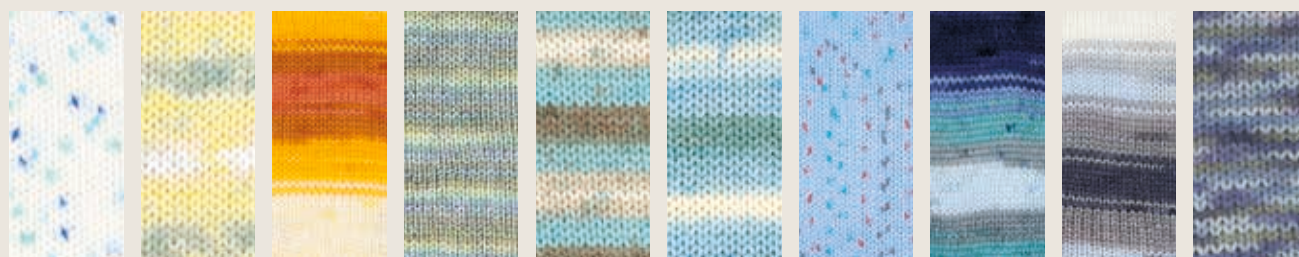
74 = 100g



3 – 3,5



114 blüte 112 flieder 108 mango 107 himbeer 119 tausend-schön 120 anemone 104 clown 105 lampion 102 fuchsie 101 daisy



103 lagune 109 küken 115 mango 118 frühling 110 sand 111 aqua 113 himmel 116 meer 117 grey 106 jeans



Baby Mix 150166-..

Art.-Nr. · quality-no.: 90166

Kategorie · category: Wollmischungen · wool blends

Material · blend: **50% Schurwolle (Superwash)** · virgin wool,
50% Polyacryl (Micorfaser) · acrylic



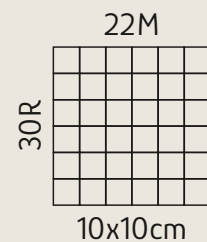
Lauflänge · running length: ca. 135m / 50g
10x50g in 500g Polybeutel · polybag



74 = 100g



3,5 – 4

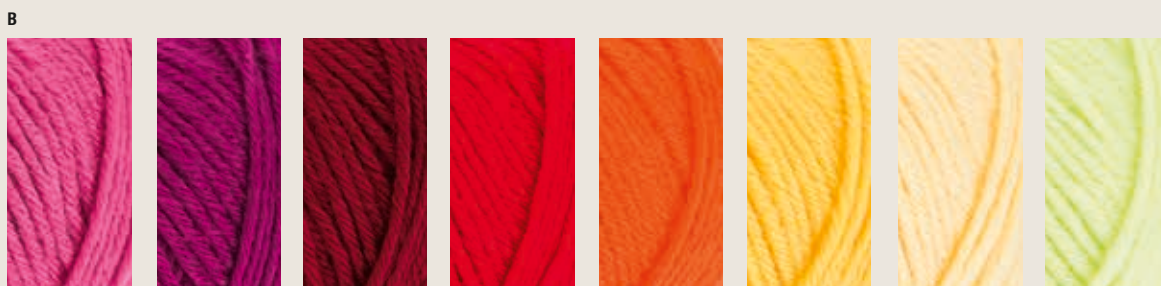


24 Farben · colors

- 01 A/01
- 02 C/08
- 03 B/04
- 04 C/07
- 05 A/07
- 06 A/08
- 07 C/04
- 08 C/03
- 09 B/08
- 10 A/02
- 11 B/07
- 12 A/06
- 13 C/06
- 14 C/05
- 15 C/02
- 16 B/06
- 17 B/05
- 18 B/01
- 19 A/03
- 20 A/04
- 21 B/03
- 22 A/05
- 23 C/01
- 24 B/02



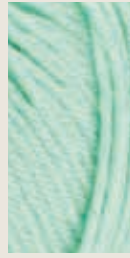
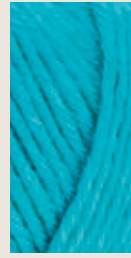
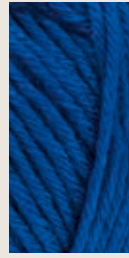
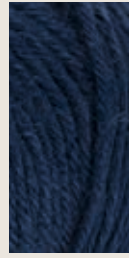
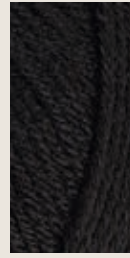
01 weiß 10 natur 19 sandmeliert 20 braun* 22 grau-meliert 12 apricot 05 rosa 06 flieder



18 pink 24 cyclam 21 weinrot 03 rot 17 orange 16 gelb 11 vanille 09 pistazie

150166-..

c

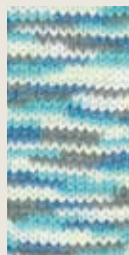
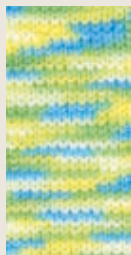
23
gift*15
gras08
mint07
hellblau14
türkis13
royal04
dunkel-
blau02
schwarz

* Nur solange Vorrat reicht · Only while stocks last



Baby Mix Color 130271-..

Art.-Nr. · quality-no.: 91271

101
bunt102
pastell103
anemone104
meer105
frühlung



Bambou Cotton 130286-..

Art.-Nr. · quality-no.: 90286

Kategorie · category: Baumwollmischungen · cotton blends

Material · blend: **40% Viskose (Bambus)** · viscose, **30% Baumwolle** · cotton, **30% Polyacryl** · acrylic



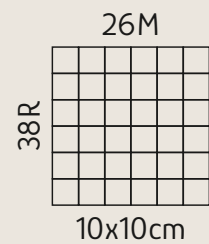
Lauflänge · running length: ca. 400m / 100g
5x100g in 500g Polybeutel · polybag



38M = 400g



2,5 – 3,5



01 weiß

05 leinen

06 taupe

03 flieder

19 rosa

07 pink

08 rot

09 orange

10 gelb

15 vitamin



11 gift

12 gras

16 meergrün

17 pool

13 lagune

18 hellblau

14 royal

04 marine

02 schwarz



Chic & Warm 130179-..

Art.-Nr. · quality-no.: 90179

Kategorie · category: Wollmischungen · wool blends

Material · blend:

75% Polyacryl · acrylic, **15% Wolle** · wool, **10% Alpaka** · alpaca



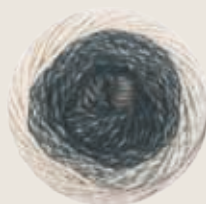
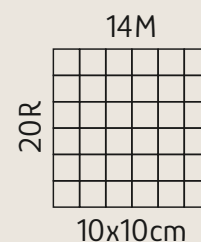
Lauflänge · running length: ca. 210m / 100g
5x100g in 500g Polybeutel · polybag



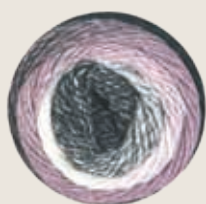
38M = 400g



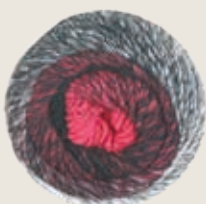
4,5 – 5,5



01
camel



05
malve



04
pink



11
dahlie



03
rubin



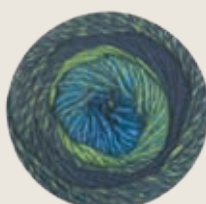
02
violett



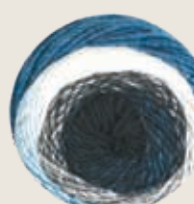
09
moos



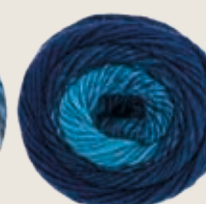
10
senf



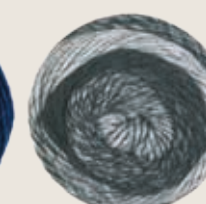
08
grün



07
blau



12
türkis



06
anthrazit



Cosy Tweed 130284-..

Art.-Nr. · quality-no.: 90284

Kategorie · category: Wollmischungen · wool blends

Material · blend: **31% Polyacryl** · acrylic, **20% Wolle** · wool, **16% Polyester** · polyester, **15% Polyamid** · nylon, **10% Seide** · silk, **8% Alpaka** · alpaca



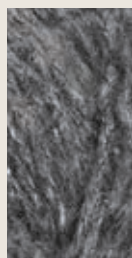
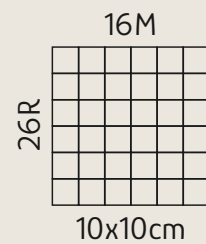
Lauflänge · running length: ca. 165m / 50g
10x50g in 500g Polybeutel · polybag



38M = 350g



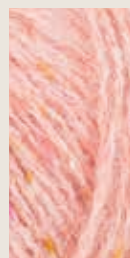
4 – 5



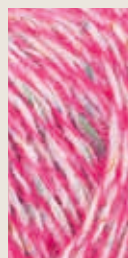
09
grau



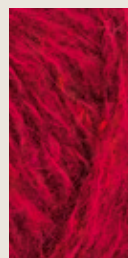
10
braun



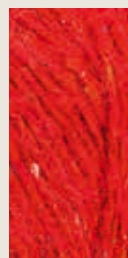
01
rosé



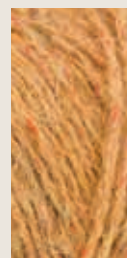
04
pink



03
kirsche



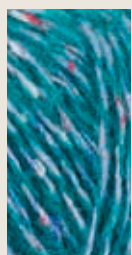
02
feuer



07
honig



05
flieder



14
petrol



12
dunkelblau



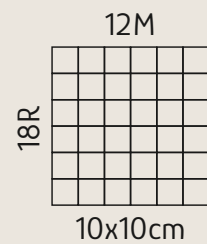
Filzi 150119-..

Art.-Nr. · quality-no.: 90119
 Kategorie · category: Schurwolle · virgin wool

Material · blend:
100% Schurwolle · virgin wool



Lauflänge · running length: ca. 50m / 50g
 10x50g in 500g Polybeutel · polybag / 10-kg-Einheitskarton · unit box



 7 – 8



A



01 weiß 10 natur 34 sand-meliert 35 braun-meliert 37 kaffee-meliert 20 grau 30 silber-meliert 31 grau-meliert

B



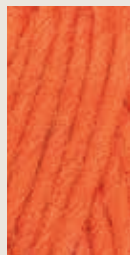
29 anthrazit-meliert 17 aubergine 46 cyclam 24 pink 08 bordeaux 41 kirsche 03 rot 47 mandarine*

30 Farben · colors

- 01 A/01
- 02 D/06
- 04 D/05
- 03 B/07
- 06 C/02
- 07 C/01
- 08 B/05
- 10 A/02
- 13 C/04
- 17 B/02
- 18 D/03
- 20 A/06
- 21 D/04
- 24 B/04
- 25 C/07
- 29 B/01
- 30 A/07
- 31 A/08
- 32 C/08
- 33 C/05
- 34 A/03
- 35 A/04
- 37 A/05
- 38 D/02
- 41 B/06
- 43 C/03
- 44 C/06
- 46 B/03
- 47 B/08
- 48 D/01

150119-..

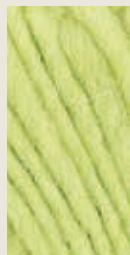
c



07
orange



06
gelb



43
gift



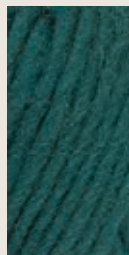
13
birke



33
gras



44
laubfrosch



25
tanne

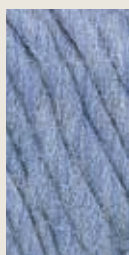


32
türkis

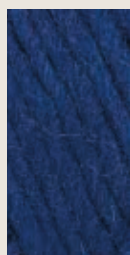
d



48
aqua



38
jeans-
meliert



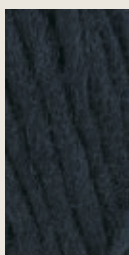
18
jeans



21
royal



04
marine



02
schwarz



Finia Tweed Recycled 130282-..

Art.-Nr. · quality-no.: 90282

Kategorie · category: Baumwollmischungen · cotton blends

Material · blend:

62% Baumwolle (recycled) · cotton, **38% Polyester (recycled)** · polyester



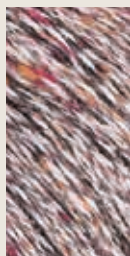
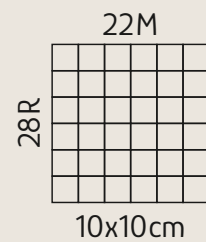
Lauflänge · running length: ca. 150m / 50g
10x50g in 500g Polybeutel · polybag



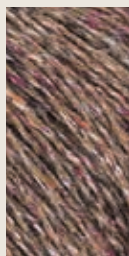
38M = 500g



3 – 3,5



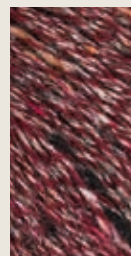
06
quarz



05
muskat



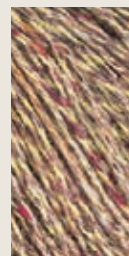
10
pink



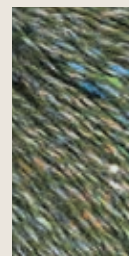
07
rubin



08
lava



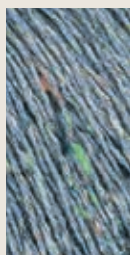
01
kornfeld



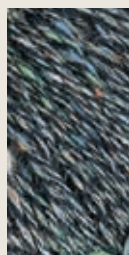
02
oliv



09
lavendel



03
jeans



04
dunkelblau



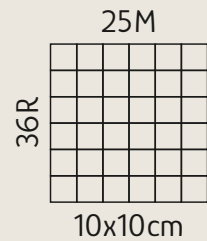
Hit 130107-..

Art.-Nr. · quality-no.: 93657
 Kategorie · category: Acryl · acrylic

Material · blend:
100% Polyacryl · acrylic



Lauflänge · running length: ca. 135m / 50g
 5x50g in 500g Polybeutel · polybag / 10-kg-Einheitskarton · unit box



38M = 400g

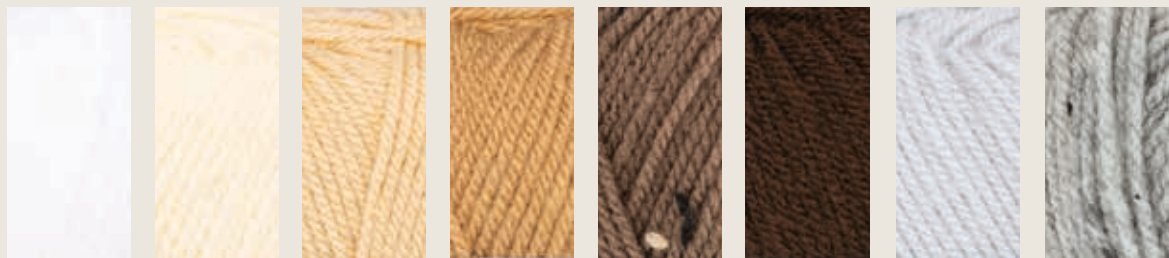


3

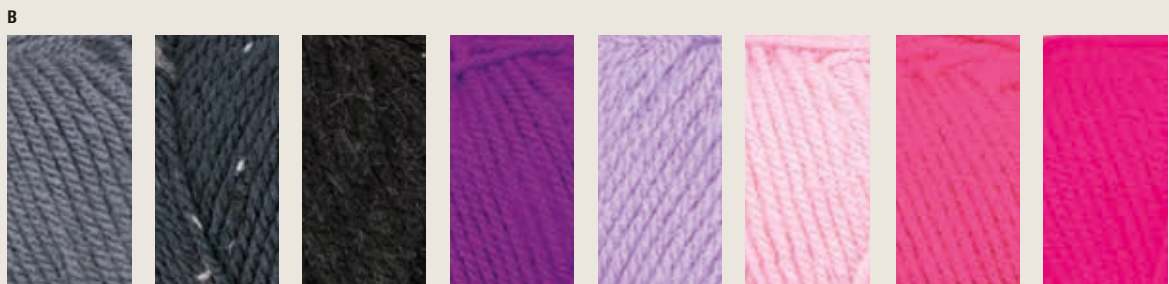


35 Farben · colors

- 01 A/01
- 02 E/03
- 04 E/02
- 05 D/04
- 09 A/07
- 10 E/01
- 12 A/04
- 17 A/06
- 22 C/07
- 24 C/04
- 25 A/03
- 28 B/01
- 29 B/06
- 32 C/03
- 33 D/02
- 34 C/08
- 36 B/07
- 37 D/06
- 43 C/01
- 44 D/01
- 47 D/08
- 218 C/05
- 221 B/08
- 224 B/05
- 234 A/02
- 235 D/03
- 236 B/04
- 237 C/02



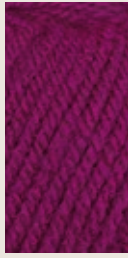
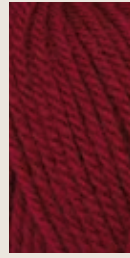
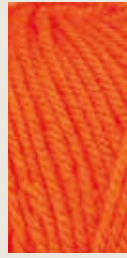
01 weiß 234 ecru 25 beige 12 hellbraun 247 braun Tweed 17 dunkelbraun 09 silber 249 grau Tweed



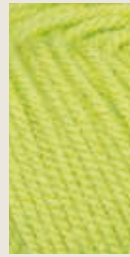
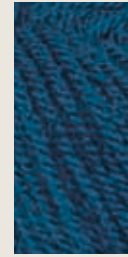
28 grau 248 jeans Tweed 250 anthrazit Tweed 236 violett 224 flieder 29 rosa 36 neon-pink 221 neon-cyclam

130107-..

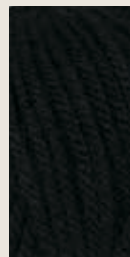
C

43
himbeere237
purpur32
bordeaux24
rot218
orange245
haut22
sonne34
neon-gelb243 D/05
244 D/07
245 C/06
247 A/05
248 B/02
249 A/08
250 B/03

D

44
zartgelb33
neon-grün235
maigrün05
gras243
dunkelgrün37
türkis244
petrol47
hellblau

E

10
blau04
marine02
schwarz



VEGAN
100%



Limone 130130-..

Art.-Nr. · quality-no.: 90130

Kategorie · category: Reine Baumwolle · pure cotton

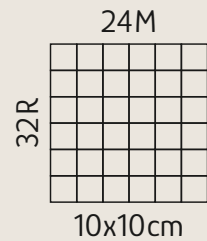
Material · blend:

100% Baumwolle mercerisiert, gasiert · cotton



Lauflänge · running length: ca. 125m / 50g

10x50g in 500g Polybeutel · polybag / 10-kg-Einheitskarton · unit box



38M = 500g



3 – 3,5



71 Farben · colors

- 03 D/03
- 02 E/04
- 04 E/07
- 06 A/01
- 10 A/03
- 15 G/05
- 21 I/04
- 24 I/07
- 25 B/03
- 29 E/03
- 36 G/06
- 38 C/04
- 49 A/04
- 55 I/03
- 56 I/06
- 69 I/01
- 73 A/02
- 78 D/04
- 79 A/06
- 84 A/08
- 91 B/04
- 99 G/02
- 100 E/06
- 103 D/02
- 108 C/07
- 110 H/05
- 113 F/02
- 123 B/06

A



06 brillantweiß 73 natur 10 sand 49 sisal 181 leinen 79 kokos 179 marone 84 nuss

B



129 mokka 180 kaffee 25 silber 91 elefant 144 anthrazit 123 aubergine 135 lila 177 flieder

130130-..

C



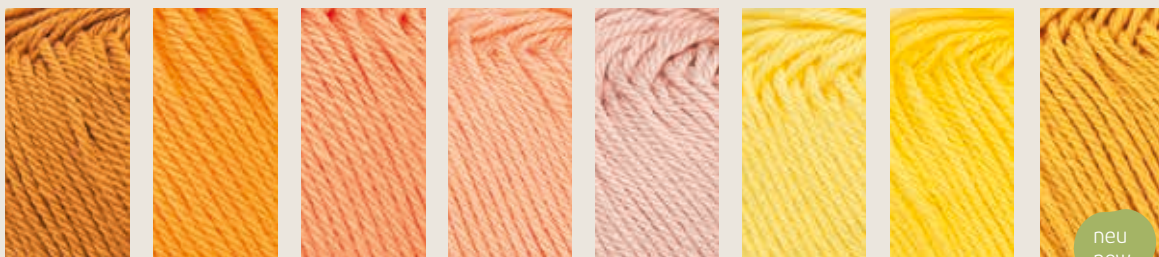
193 phlox
133 fuchsie
197 anemone
38 pink
155 cyclam
171 magnolie
108 rosa
172 rouge

D



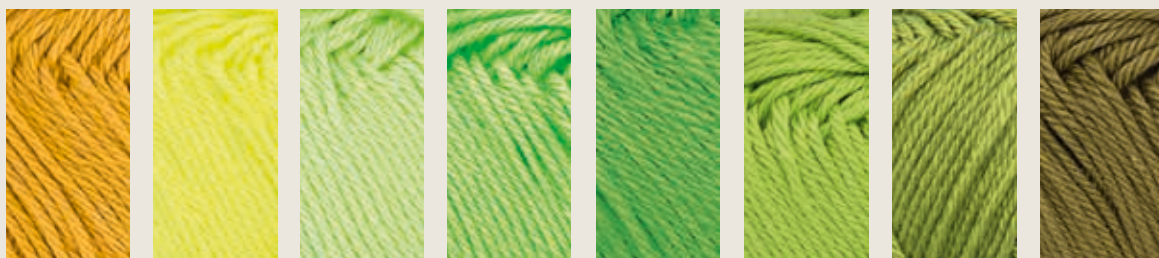
156 flamingo
103 koralle
03 rot
78 rubin
188 bordeaux
150 feuer
173 fuchs
187 chili

E



178 zimt
189 mango
29 orange
02 apricot
170 haut
100 gelb
04 honig
192 gold

F



186 senf
113 vitamin
190 pistazie
158 gift
151 laub
145 maigrün
182 moos
162 pesto

G

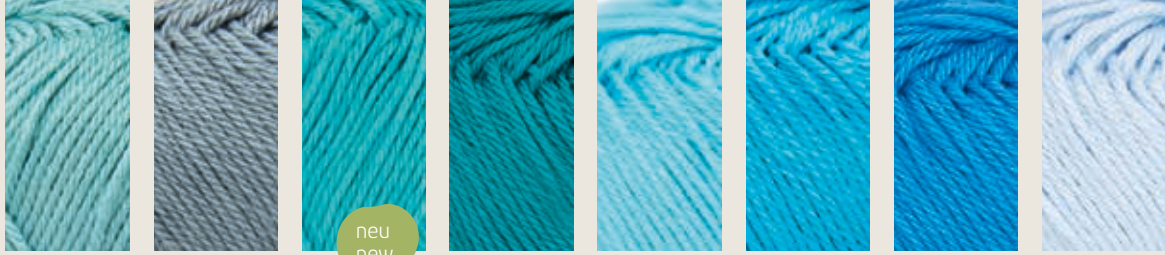


185 khaki
99 apfel
175 jade
191 meergrün
15 gras
36 roulette
194 ozean
183 mint

- 129 B/01
- 131 H/06
- 133 C/02
- 135 B/07
- 139 H/08
- 144 B/05
- 145 F/06
- 150 D/06
- 151 F/05
- 155 C/05
- 156 D/01
- 158 F/04
- 159 H/04
- 162 F/08
- 163 H/08
- 164 I/05
- 170 E/04
- 171 C/06
- 172 C/08
- 173 D/07
- 175 G/03
- 176 H/01
- 177 B/08
- 178 E/01
- 179 A/07
- 180 B/02
- 181 A/05
- 182 F/07
- 183 G/08
- 184 H/02
- 185 G/01
- 186 F/01
- 187 D/08
- 188 D/05
- 189 E/02
- 190 F/03
- 191 G/04
- 192 E/08
- 193 C/01
- 194 G/07
- 195 H/03
- 196 I/02
- 197 C/03

130130-..

H



176
see

184
stein

195
lagune

159
petrol

110
pool

131
türkis

163
karibik

139
bleu

neu
new

I



69
fjord

196
himmel

55
cobalt

21
polar

164
indigo

56
navy

24
schwarz

neu
new

Schoeller + Stahl
Limone





VEGAN
1 0 0 %



STANDARD
100



Limone Color 130131-..

Art.-Nr. · quality-no.: 90131

Kategorie · category: Reine Baumwolle · pure cotton

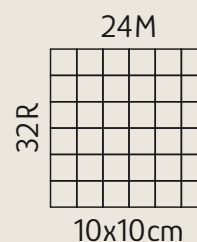
Material · blend:

100% Baumwolle mercerisiert, gasiert · cotton



Lauflänge · running length: ca. 125m / 50g

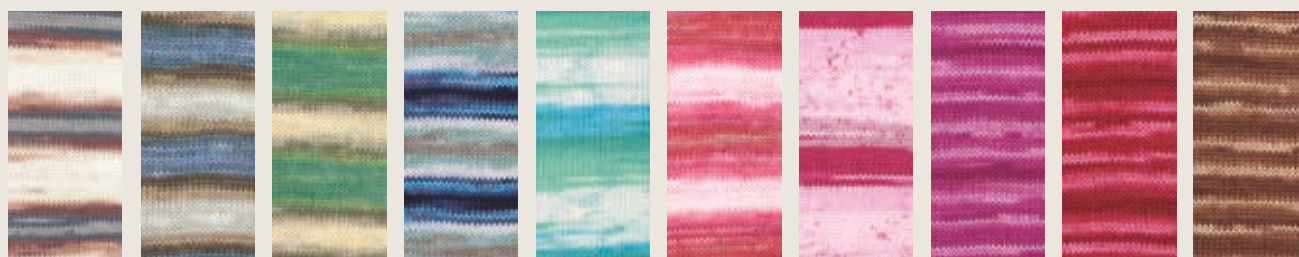
10x50g in 500g Polybeutel · polybag / 10-kg-Einheitskarton · unit box



38M = 500g



3 – 3,5



316 bambus

312 wolke

314 schilf

313 wasser

306 türkis

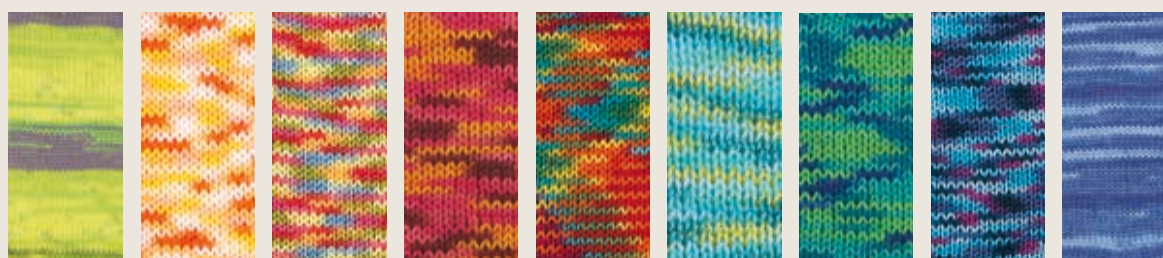
315 rosa

308 fuchsia

317 orchidee

318 kirsch

320 zimt



311 maigrün

208 sonne

204 aquarell

236 sunrise

205 tropic

232 karibik

237 lagune

226 nautilus

322 azur




Manuela Häkelgarn

Kategorie · category: Reine Baumwolle · pure cotton
 Material · blend: **100% Baumwolle gekämmt, mercerisiert, gasiert** · cotton
 4x50g in 200g Karton · cardboard box / 6,8-kg-Einheitskarton · unit box




Häkelgarn N° 5 / Art.-Nr. · quality-no.: 93409
 Lauflänge · running length: ca. 200m / 50g

 1,75 – 2

150286-..



Häkelgarn N° 15 / Art.-Nr. · quality-no.: 93411
 Lauflänge · running length: ca. 330m / 50g

 1 – 1,25

150288-..



Häkelgarn N° 20 / Art.-Nr. · quality-no.: 93412
 Lauflänge · running length: ca. 400m / 50g

 0,75 – 1

150289-..



M001
brillantweiß



M026
perlweiß



M002
natur

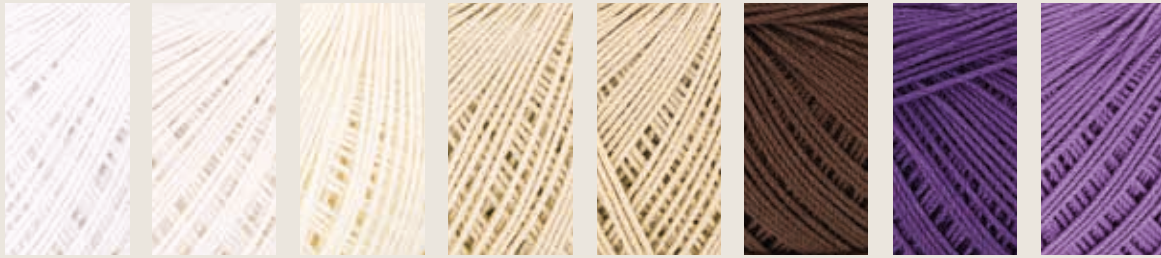


Häkelgarn N° 10 / Art.-Nr. · quality-no.: 93410
 Lauflänge · running length: ca. 280m / 50g

1,25 – 1,5

150287-..

A

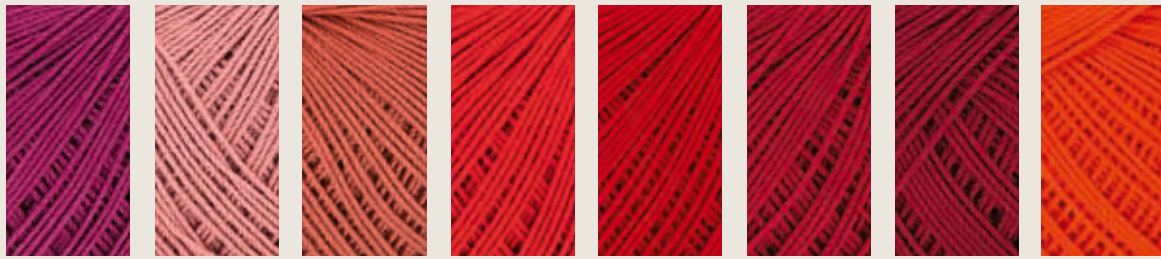


M001 brillantweiß M026 perlweiß M002 natur M003 ecru M061 creme M082 kaffee M084 aubergine M090 lila

30 Farben · colors

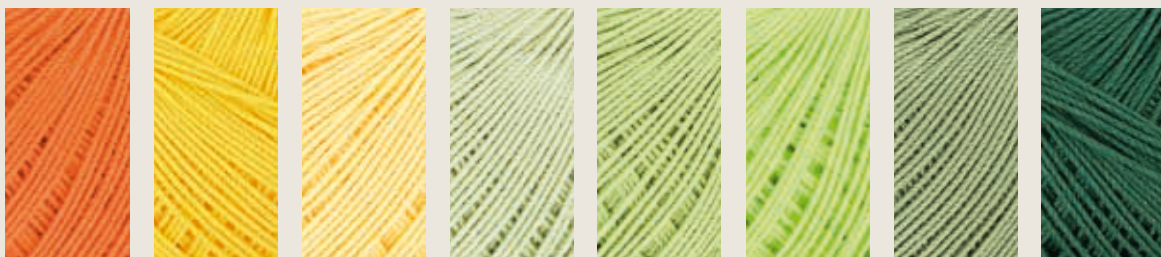
- M001 A/01
- M002 A/03
- M003 A/04
- M009 C/07
- M011 B/05
- M012 B/06
- M017 C/03
- M020 C/08
- M022 B/02
- M026 A/02
- M031 D/06
- M032 D/05
- M042 B/03
- M043 C/01
- M046 C/02
- M052 B/04
- M059 D/04
- M060 C/04
- M061 A/05
- M066 B/07
- M078 D/03
- M082 A/06
- M084 A/07
- M085 B/01
- M086 C/06
- M087 C/05
- M088 B/08
- M090 A/08
- M091 D/02
- M092 D/01

B



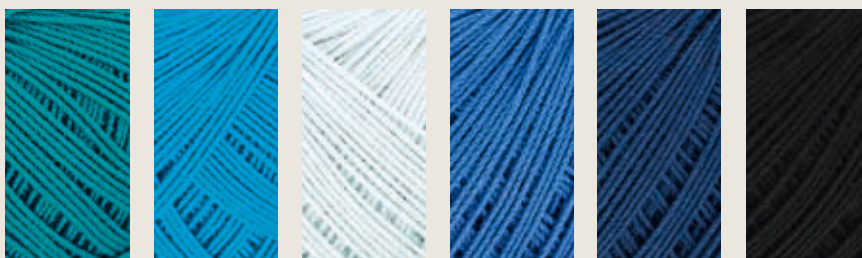
M085 fuchsie M022 rouge M042 terracotta M052 kirsch M011 rubin M012 granat M066 bordeaux M088 feuer

C



M043 orange M046 dotter M017 mimose M060 lind M087 maigrün M086 vitamin M009 pinie M020 tanne

D



M092 petrol M091 türkis M078 hellblau M059 atlantic M032 nachtblau M031 schwarz



Manuela Perlgarn

Kategorie · category: Reine Baumwolle · pure cotton

Material · blend: **100% Baumwolle gekämmt, mercerisiert, gasiert** · cotton



Perlgarn No 5 Strang · strand / Art.-Nr. · quality-no.: 82510



Lauflänge · running length: ca. 200m / 50g

5x50g in 250g Karton · cardboard box / 8-kg-Einheitskarton · unit box

150251-..

Perlgarn No 15 Knäuel · ball / Art.-Nr. · quality-no.: 82520



Lauflänge · running length: ca. 70m / 10g

10x10g in 100g Karton · cardboard box / 5-kg-Einheitskarton · unit box

150252-..



M001
brillantweiß*



M026
perlweiß



M002
natur



Manuela Gold & Silber metallisiert 150072-..

Art.-Nr. · quality-no.: 90072

Kategorie · category: Spezialgarne · special yarns

Material · blend:

85% Viskose · viscose, **15% Polyester metallisiert** · polyester



Lauflänge · running length: ca. 110m / 25g

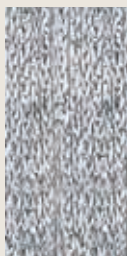
10x25g in Karton · cardboard box / 3-kg-Einheitskarton · unit box



2,5 – 3



0001
gold



0002
silber



Puppengarn 150104-..

Art.-Nr. · quality-no.: 93913
Kategorie · category: Mohair

Material · blend:

74% Mohair · mohair, **17% Wolle** · wool, **9% Polyamid** · nylon



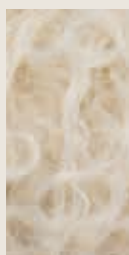
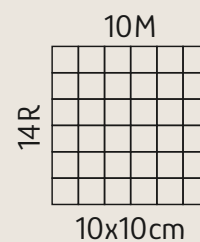
Lauflänge · running length: ca. 50m / 50g
10x50g in 500g Polybeutel · polybag / 5-kg-Einheitskarton · unit box



38M = 800g



7 – 8



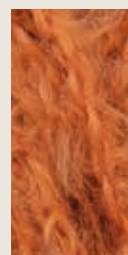
451
natur



459
hellblond



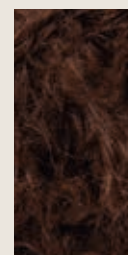
453
blond



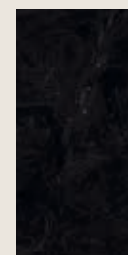
454
rot



455
braun



458
kastanie



452
schwarz



Record 210 150170-..

Art.-Nr. · quality-no.: 90173
 Kategorie · category: Reine Baumwolle · pure cotton

Material · blend:
100% Baumwolle · cotton



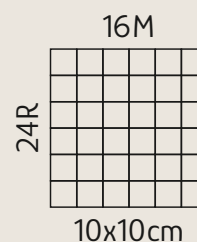
Lauflänge · running length: ca. 90m / 50g
 10x50g in 500g Polybeutel · polybag / 13-kg-Einheitskarton · unit box



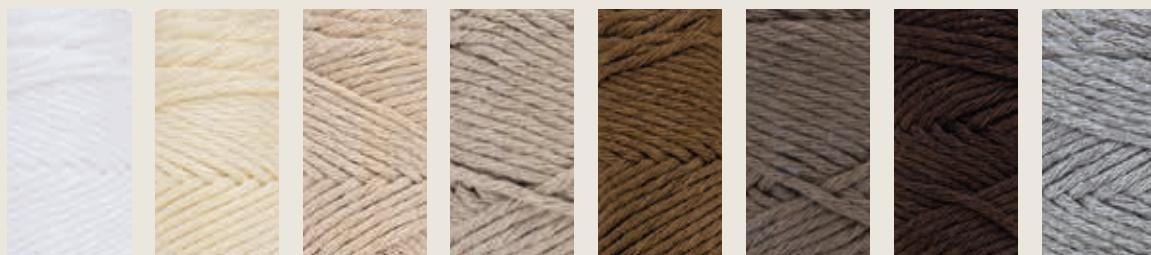
38M = 600g



4 – 4,5



A



81 weiß 80 natur 115 hellbeige 182 leinen 181 nuss 183 taupe 107 dunkelbraun 178 grau

B



166 elefant 97 lila 188 flieder 143 rosé 96 rosa 118 malve 83 kirsch 120 weinrot

34 Farben · colors

- 80 A/02
- 81 A/01
- 82 D/08
- 83 B/07
- 85 C/04
- 87 E/02
- 91 C/05
- 93 C/02
- 94 C/06
- 96 B/05
- 97 B/02
- 103 C/08
- 105 D/04
- 107 A/07
- 114 E/01
- 115 A/03
- 118 B/06
- 120 B/08
- 137 D/01
- 141 D/06
- 143 B/04
- 166 B/01
- 174 D/07
- 178 A/08
- 180 C/01
- 181 A/05
- 182 A/04

150170-..

C

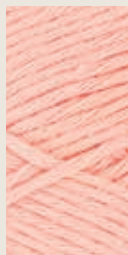
183 A/06
184 C/07
185 D/05
186 D/03
187 C/03
188 B/03
189 D/02



180
feuer



93
orange



187
apricot



85
mimose



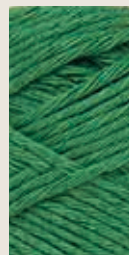
91
mais



94
hellgrün

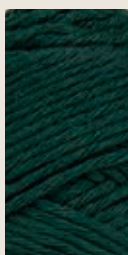


184
laub



103
gras

D



137
tanne



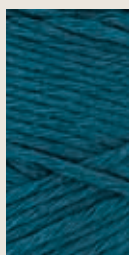
189
mint



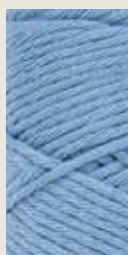
186
aqua



105
türkis



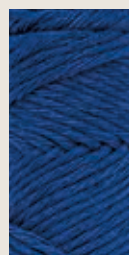
185
petrol



141
bleu

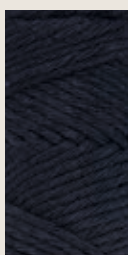


174
denim



82
royal

E



114
nachtblau



87
schwarz



Record 210 Color 150172-..

Art.-Nr. · quality-no.: 90172

Kategorie · category: Reine Baumwolle · pure cotton

Material · blend:

100% Baumwolle · cotton



Lauflänge · running length: ca. 90m / 50g

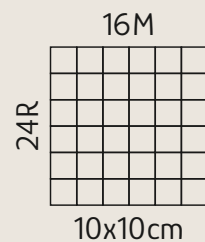
10x50g in 500g Polybeutel · polybag / 13-kg-Einheitskarton · unit box



38M = 600g



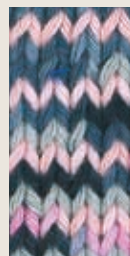
4 – 4,5



235
cappuccino



221
strand



232
quarz



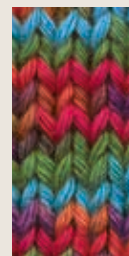
229
lila



202
feuer



234
ahorn



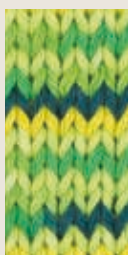
206
gras-pink



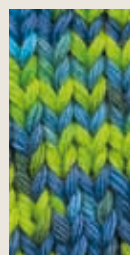
213
daisy



212
harlekin



233
grün



204
blau-grün



231
türkis



208
marine



Soft Touch 150283-..

Art.-Nr. · quality-no.: 90283

Kategorie · category: Wollmischungen · wool blends

Material · blend:

80% Polyacryl · acrylic, **20% Wolle** · wool



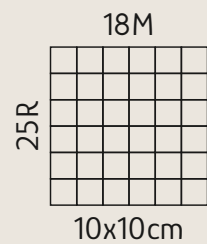
Lauflänge · running length: ca. 235m / 100g
5x100g in 500g Polybeutel · polybag



38M = 500g



4 – 4,5



01 weiß

05 hanf

08 schoko

14 hellgrau

18 graumeliert

06 rosa

07 fuchsia

03 kirsche

19 weinrot

09 mais



10 apfel

17 gras

11 türkis

16 lagune

13 jeans

15 capri

12 royal

04 marine

02 schwarz



Tropic Cotton 130287-..

Art.-Nr. · quality-no.: 90287

Kategorie · category: Reine Baumwolle · pure cotton

Material · blend:

100% Baumwolle (Organic) · cotton



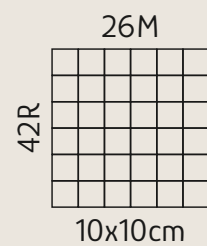
Lauflänge · running length: ca. 600m / 150g
5x150g in 750g Polybeutel · polybag



38M = 400g



2,5 – 3,5



01
pink



02
erdbeere



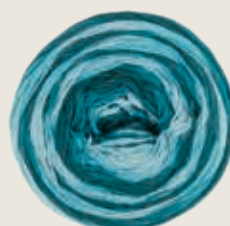
03
orange



04
sonne



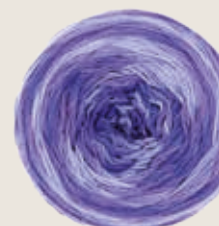
05
apfel



06
türkis



07
meer



08
lavendel



Wollfrauen 130738-..

Art.-Nr. · quality-no.: 91210
 Kategorie · category: Schurwolle · virgin wool

Material · blend:
100% Merino-Schurwolle (Superwash) · virgin wool



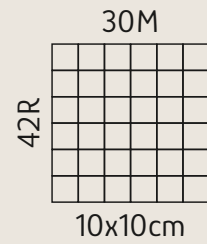
Lauflänge · running length: ca. 300m / 50g
 20x50g in 1kg Polybeutel · polybag / 12-kg-Einheitskarton · unit box



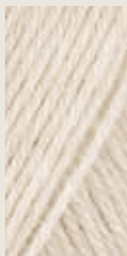
38M = 350g



2,5 – 3



01
weiß



03
natur-
meliert



Zimba Fix / Medium / Top

Kategorie · category: Wollmischungen · wool blends

Material · blend: **80% Schurwolle (Superwash)** · virgin wool, **20% Polyamid** · nylon

10x50g in 500g Polybeutel · polybag / 12-kg-Einheitskarton · unit box



Zimba Fix / Art.-Nr. · quality-no.: 90138
Lauflänge · running length: ca. 87m / 50g



38M = 700g

10x10 cm = 25R 18M
3,5 – 4

130138-..



Zimba Medium / Art.-Nr. · quality-no.: 90139
Lauflänge · running length: ca. 125m / 50g



38M = 500g

10x10 cm = 28R 20M
3,5

130139-..



Zimba Top / Art.-Nr. · quality-no.: 90137
Lauflänge · running length: ca. 150m / 50g

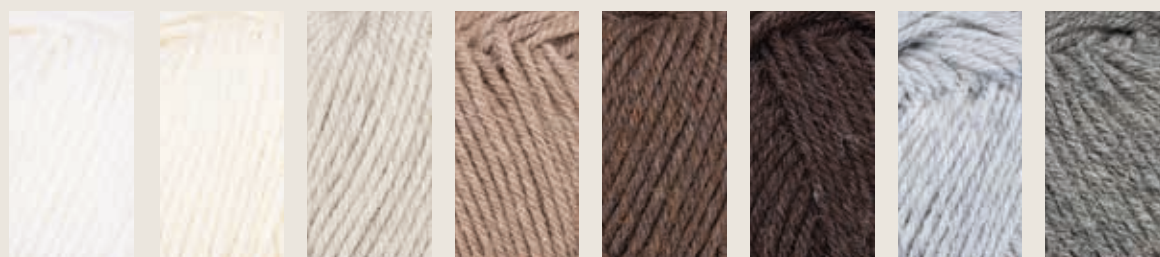


38M = 450g

10x10 cm = 33R 25M
2,5 – 3

130137-..

A



20 weiß

81 ecru

19 hellbeige-meliert

22 beige-meliert

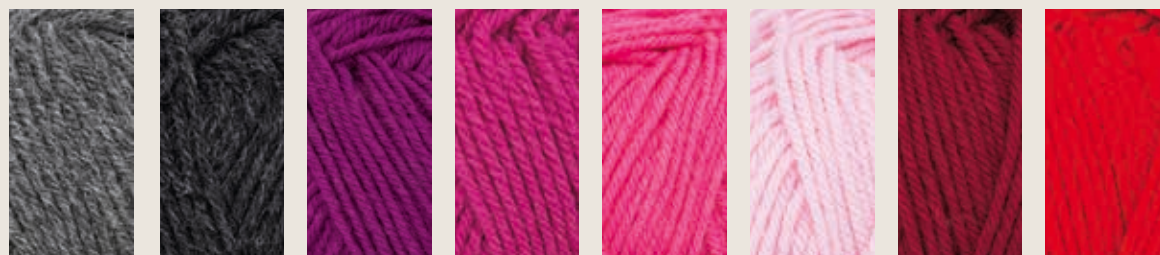
66 kaffee meliert

59 braun-meliert

6017 flanell-meliert

02 hellgrau meliert

B



03 grau meliert

01 anthrazit meliert

8178 purpur* **

8160 fuchsie

8145 pink * ***

8179 rosé

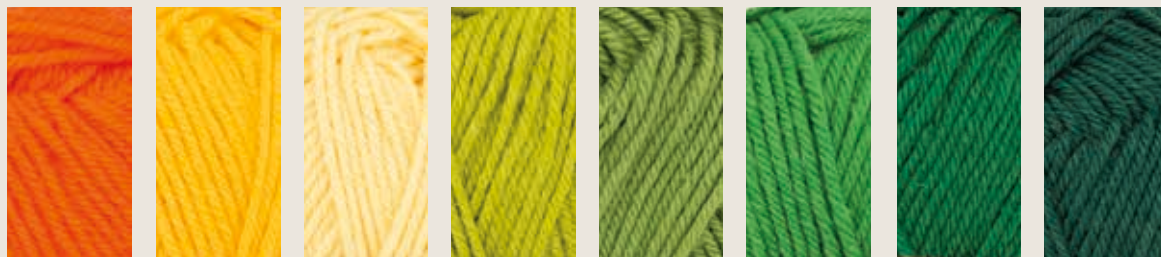
942 weinrot

210 rot

36 Farben · colors

- 01 B/02
- 02 A/08
- 03 B/01
- 19 A/03
- 20 A/01
- 22 A/04
- 33 D/06
- 56 D/08
- 59 A/06
- 61 C/02
- 66 A/05
- 80 D/01
- 81 A/02
- 210 B/08
- 878 C/08
- 942 B/07
- 1007 D/02
- 1115 D/07
- 6017 A/07
- 8145 B/05
- 8146 C/06
- 8147 D/04
- 8160 B/04
- 8161 C/01
- 8163 C/07
- 8164 D/05
- 8169 C/05
- 8176 D/03
- 8177 C/04
- 8178 B/03
- 8179 B/06
- 8180 C/03

C



8161
orange

61
sonne

8180
gelb*

8177
avocado* **

8169
laub**

8146
gras

8163
smaragd

878
grün

D



80
loden

1007
grün
meliert

8176
eis* **

8147
eisvogel* **

8164
petrol

33
hellblau* **

1115
jeans
meliert

56
jeans

E



854
royal

8168
dunkel-
petrol

580
marine

121
schwarz

130138-..

130139-..

130137-..

* diese Farbe ist in Zimba Fix nicht erhältlich · * this color is not available in Zimba Fix
 ** diese Farbe ist in Zimba Top nicht erhältlich · ** this color is not available in Zimba Top
 *** diese Farbe ist in Zimba Medium nicht erhältlich · *** this color is not available in Zimba Medium



Zimba Fix Color 130140-..

Art.-Nr. · quality-no.: 90140

Kategorie · category: Wollmischungen · wool blends

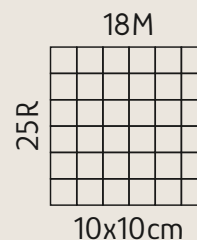
Material · blend:

80% Schurwolle (Superwash) · virgin wool, **20% Polyamid** · nylon



Lauflänge · running length: ca. 87m / 50g

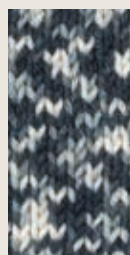
10x50g in 500g Polybeutel · polybag / 12-kg-Einheitskarton · unit box



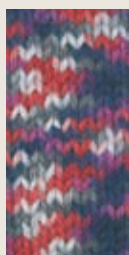
38M = 700g



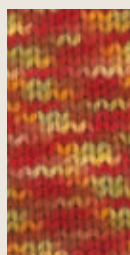
3,5 – 4



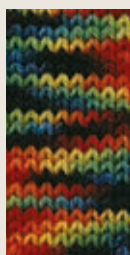
25
granit



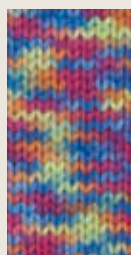
40
vulkan



31
ahorn



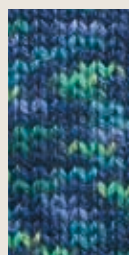
19
kilt



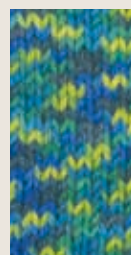
30
clown



38
polar



20
murano



39
country

Zeichen · symbols



Handwäsche nicht über 30 °C · lukewarm hand wash only



Wollwaschgang nicht über 30 °C · machine washable but only with wool wash program not exceeding 30 °Celsius



Schonwaschgang nicht über 30 °C · machine wash (30 °C) gentle cycle



Wollwaschgang nicht über 40 °C · machine washable but only with wool wash program not exceeding 40 °Celsius



Maschinenwaschbar bis max 60 °C · machine washable up to 60 °C



Nicht dämpfen · not ironing



Mit schwacher Einstellung dämpfen (Synthetics) · not hot ironing



Mit mittlerer Einstellung dämpfen (Wolle) · medium hot ironing



Chlorbleiche nicht möglich · do not bleach



Nicht im Wäschetrokner trocknen · do not tumble dry



Trocknen mit reduzierter thermischer Belastung · Tumble dry at a reduced temperature



Liegend trocknen · dry flat



Mit Perchloräthylen oder Benzin reinigen · dry cleaning with perchloroethylene or dry cleaning spirit



Spezialreinigung: Der Strich unter dem Kreis verlangt bei der Reinigung nach einer Beschränkung der mechanischen Beanspruchung und der Feuchtigkeitszugabe. Keine Selbstreinigung · special cleaning: The dash underneath the circle means reduced mechanical action and water addition during cleaning. No selfservice



Für Handstrickapparate geeignet · suitable for handknitting machines

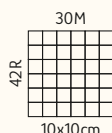


Schonende Reinigung mit Lösungsmitteln · gentle cleaning with solvents



4 – 5

Die angegebenen Nadelstärken geben nur einen ungefähren Anhaltspunkt. Verbindlich ist die Maschenprobe · the sizes of needles indicated are relative, i.e. should be adjusted according to result when knitting the tension sample



Maschenprobe: R = Anzahl der Reihen auf 10 cm, M = Anzahl der Maschen auf 10 cm · tension: R = number of rows per 10 cm (4 inches), M = number of stitches per 10 cm (4 inches)



38M = 350g

Die Mengenvorgaben sind Schätzwerte, die sich lediglich auf ein glattrechts gestricktes Teil beziehen · the amount of yarn consumption indicated is approximate and refers to knitwear worked in stocking stitches only

Benelux:	Verachttert NV/SA, Molsesweg, 132,B-2440 Geel, Tel. +32 (0)14 58 01 11, E-Mail: info@verachttert.be, www.verachttert.be
Bulgarien/ Rumänien/Ungarn:	Daiki Design srl, Calea Rahovei 240, RO-050897 Bukarest, Tel: +40-722-293132, E-Mail: comenzi@tiparedecoitorie.ro, www.tiparedecoitorie.ro
Deutschland:	Schoeller Handstrickgarne GmbH, Am Fleckenberg 2,D-65549 Limburg, Tel.: + 49 (0)6431/503 380, Fax +49 (0)6431/503 155,E-Mail: wolle@kurtenbach.de
Estland:	OÜ Karnaluks, K. A. Hermanni 1, EE-10121-Tallinn, Tel.: +372/6 013 373, Fax: +372/6013373, E-Mail: anu@KL24.ee, www.KL24ee
Finnland:	Prym Consumer Finland Oy, Huhtimontie 6B, FI-04200 Kerava, Tel.: +358 9274 871, E-Mail: sales.fi@prym.com, www. prym.fi Lankava Oy, Kauppatie 65, FI-62200 Kauhava, Tel. +358 64345 500, www.lankava.fi, E.Mail: lankava@lankava.fi teetee Shop Oy, Teollisuustie 12a, FI-06150-Porvoo, www.teeteeshop.fi, E-Mail: info@teeteeshop.fi
Frankreich:	Schoeller Handstrickgarne GmbH, Am Fleckenberg 2, D-65549 Limburg, Tel.: + 49 (0)7162 93050 27, E-Mail: outlet@style-and-concept.de
Griechenland:	L. Vassiloglou S.A., 37 Ionos Dragoumi Str., GR-54625-Thessaloniki, Tel.: +30-2310 530845, E-Mail: vassiloglou@allamanis.gr
Italien:	Stafil GmbH, Stradivaristraße 6, I-39100 Bozen, Tel.: + 39 0471 / 06 03 00, E-Mail: info@stafil.it, www.stafil.com M. Eccel GmbH, Kreuzsteinweg 7, I-39057 Eppan, Tel.: +39 0471 / 977 358, E-Mail: me@eccel.info eccel.info
Kroatien + Serbien:	DI-TEX d.o.o., Dinka Liplin – Prpic, Pantovcak 7, HR-1000 Zagreb, Tel. +385 91 230 49 60, E-Mail: lpdinka@icloud.com
Lettland + Litauen:	UAB „Karliska vilna“, Genio 16-6, LV-50167-Kaunas/Litauen, Tel.: +370 699 66699, E-Mail: karaliskavilna@gmail.com, www.karaliskavilna.com
Österreich:	Schoeller Handstrickgarne GmbH, Am Fleckenberg 2, D-65549 Limburg, Tel.: + 49 (0)6431 / 503 380, Fax +49 (0)6431 / 503 155, E-Mail: wolle@kurtenbach.de
Polen:	Biferno . ul. Jagiellonska 60B, PL 34-130 Kalwaria Zebrzydowska, Tel.: +48 33 330 59 00, E-Mail: info@biferno.pl, www.biferno.pl
Portugal:	Retrosarias Bocage, Lda, Rua Major Afonso Pala, 52, 290-198 Setúbal, Tel. 265 237 169, www.retrosariasbocage.com, E-Mail: geral@retrosariasbocage.com
Russland:	GELA-Premium, RU-141400, Vladenije 13B, Vashutinskoje shosse Khimki, Moscow area, Tel.: +7(495)742 50 43, Email: anton@gela.ru, www.gela.ru
Schweden:	Kinna Textil AB, Fritslavägen 80, 51142 Kinnahult, Tel.: 0320-18451, www.kinnatextil.se, E-Mail: info@kinnatextil.se
Schweiz:	Sommer Wolle /Jacques Sommer AG, Bleienbachstr. 6, CH-4932 Lotzwil, Tel.: +41 (0)62 919 10 10, E-Mail: info@sommer.ch, www.sommer.ch
Singapur:	Chitta Chora International, 4 Sago Lane #02-125, SGP-050004-Singapore, Tel.: +65 62243816, E-Mail: info@chittachora.com
Slowenien:	Monna lisa d.o.o., Kidriceva cesta 75, SLO-4220-Skofja Loka, Tel.: + 386/(04) 515 1717, E-Mail: darja@monna-lisa.si, www.monna-lisa.si
Taiwan/China:	Katsudon Co., Ltd., 7FL-3, No. 25, Sec. 1 . Nanking E Rd., Taipei, Taiwan, R.O.C., Tel.: +886-2 25618718, E-Mail: hsujoyce, 36@gmail.com, www.taiwantrade.com
Tschechien:	FILI spol. s.r.o., velkoobchod textilni galanterii, Filsofska 3/1166, CZ-14200-Praha 4, Tel.: +420 604 230 326, E-Mail: info@fili.cz, www.fili.cz
Impressum:	Schoeller Handstrickgarne GmbH, Am Fleckenberg 2, D-65549 Limburg
Gestaltung:	Kseniya Eick, Mandy Müller
Druck:	Die Medienmanager GmbH, D-20097 Hamburg

Druckfehler und Irrtümer vorbehalten. Drucktechnisch bedingte Farbunterschiede sind nicht ganz auszuschließen ·
Printed in Germany. Subject to printing errors and mistakes. Color differences due to printing techniques cannot
be completely ruled out.



AUSTERMANN
WOLLE

schoeller+stahl
GANZ SCHÖN KREATIV



Mit Liebe
zur Natur
With love
for nature



Schoeller Handstrickgarne GmbH
Am Fleckenberg 2
D-65549 Limburg
Tel.: +49 6431 503 380
Fax: +49 6431 503 155
E-Mail: auftrag@kurtenbach.de
Website: www.schoeller-wolle.de



www.facebook.com/schoeller.wolle



www.instagram.com/schoeller_wolle

Artikelnr.: 053032

